

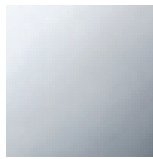


Shower - Tara.

Wall mounted two- and three-way diverter trim - polished chrome

Article number: 36 104 892-00

- Manual diverter
- Flange 3-3/8"
- (ADA)

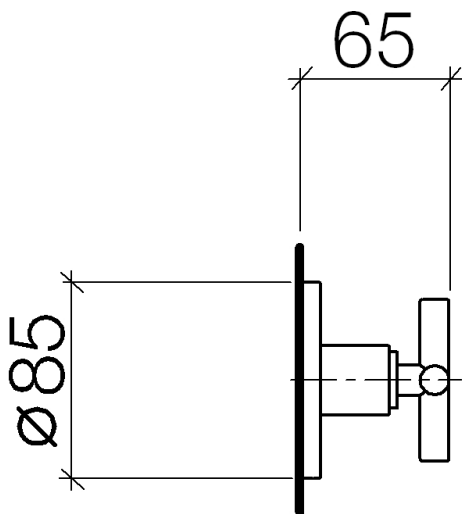


polished chrome



Accessory is required for this item.

Dimensional drawing



All dimensions in mm / inch = mm x 0,0394



Shower - Tara.

Wall mounted two- and three-way diverter trim - polished chrome

Article number: 36 104 892-00



Shower - Tara.

Wall mounted two- and three-way diverter trim - polished chrome

Article number: 36 104 892-00

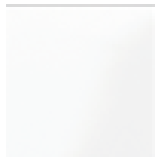
Other surface finishes



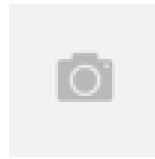
platinum matte
36 104 892-06



platinum
36 104 892-08



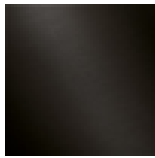
white matte
36 104 892-10



Brushed Durabronze
36 104 892-28



black matte
36 104 892-33



Dark Platinum matte
36 104 892-99

More custom finish options are available via special production (xTra Service). Please see our finish matrix for availability and pricing or contact a Dornbracht representative.

Required article



35 104 970-90 0010
Wall mounted three-way
diverter -



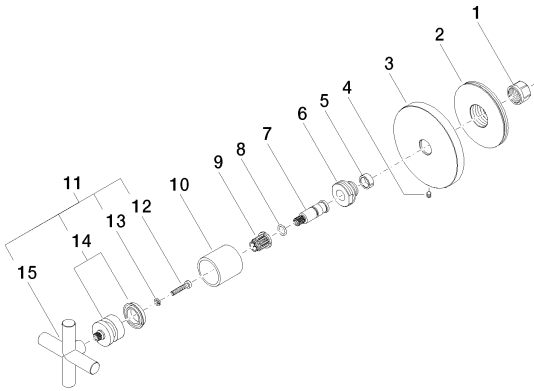
35 124 970-90 0010
Wall mounted two-way
diverter -

Shower - Tara.

Wall mounted two- and three-way diverter trim - polished chrome

Article number: 36 104 892-00

Spare parts list



Number	Item Number	Designation	Number of units
1	09 23 30 023 90	nut	1
2	09 21 02 109 90	cover	1
3	09 27 89 111-00	rosette	1
4	09 31 11 007 90	pin	1
5	09 14 15 020 90	ring	1
6	09 24 05 002 90	nipple	1
7	09 29 06 022 90	spindle	1
8	09 14 10 060 90	seal	1
9	09 12 12 002 90	fixing cap	1
10	09 21 02 144-00	sleeve	1
11	04 20 89 010 00-00	handle	1
12	09 30 30 075 90	screw	1
13	09 30 11 029 90	disc	1
14	90 12 12 007 00-00	base	1
15	09 20 89 010-00	handle	1