

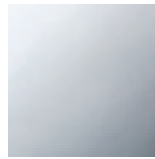


Bathtub - MEM

Two-way diverter - polished chrome

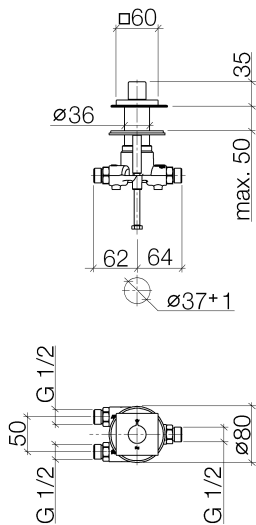
Article number: 29 125 980-00

- Manual diverter
- 1-1/2" hole diameter
- Flange 2-3/8" x 2-3/8"
- 1/2" connection
- Water flow rate limited to max. 6.2 gpm
- With label
- Fittings group in compliance with DIN 4109: 2



polished chrome

Dimensional drawing



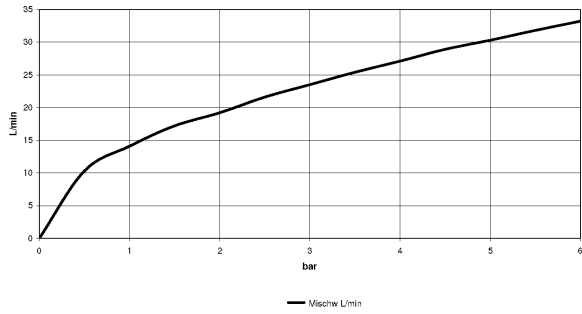
29 125 980-FF

All dimensions in mm / inch = mm x 0,0394



Bathtub - MEM
Two-way diverter - polished chrome
Article number: 29 125 980-00

Flow rate chart





Bathtub - MEM
Two-way diverter - polished chrome
Article number: 29 125 980-00

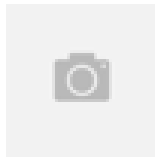
Other surface finishes



platinum matte
29 125 980-06



platinum
29 125 980-08



Brushed Durabrass
29 125 980-28



Dark Platinum matte
29 125 980-99

More custom finish options are available via special production (xTra Service). Please see our finish matrix for availability and pricing or contact a Dornbracht representative.

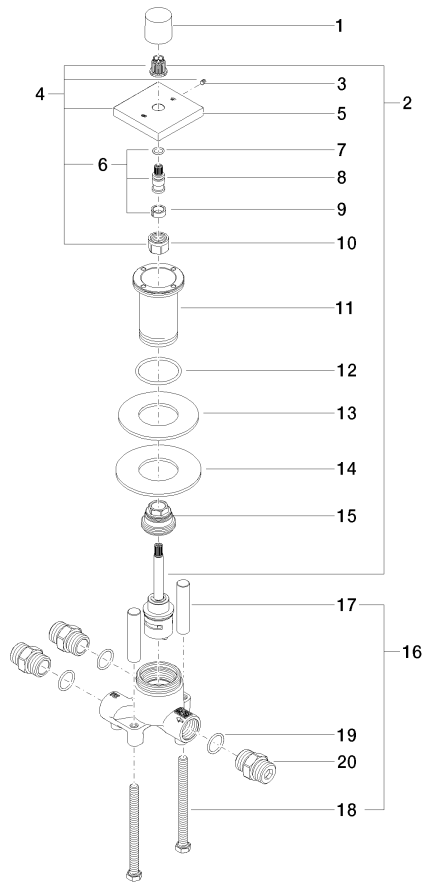
Recommended article



12 509 970-90 0010
Hose set -

Bathtub - MEM
Two-way diverter - polished chrome
Article number: 29 125 980-00

Spare parts list



| Number | Item Number | Designation | Number of units |
|--------|--------------------|---|-----------------|
| 1 | 09 20 98 001-00 | handle | 1 |
| 2 | 90 90 03 211 00 90 | diverter | 1 |
| 3 | 04 27 98 021 00-00 | rosette | 1 |
| 4 | 04 31 11 112 00 90 | pin | 1 |
| 5 | 09 30 01 105 90 | sleeve | 1 |
| 6 | 09 14 10 143 90 | seal | 1 |
| 7 | 09 14 05 059 90 | seal | 1 |
| 8 | 09 30 11 136 90 | disc | 1 |
| 9 | 09 24 04 223 90 | nipple | 1 |
| 10 | 04 30 30 153 00 90 | fixing set | 1 |
| 11 | 09 18 40 114 90 | sleeve | 2 |
| 12 | 09 30 30 153 90 | screw | 2 |
| 13 | 09 14 10 010 90 | seal | 3 |
| 14 | 09 24 03 168 10 90 | nipple | 3 |
| 15 | 09 11 03 009 90 | connection | 1 |
| 16 | 12 501 970 90 | Flexible supply line 1/2" x 1/2" x 11-3/4" - | 1 |
| 17 | 09 17 11 051 90 | adaptor | 1 |