



Bathtub - TARA
Volume Control clockwise-closing 1/2" - Brushed Chrome
Article number: 36 607 882-93
Date of manufacture from 8/1/2021



- Flange diameter 2-1/8"
- Ceramic disc cartridge

Codes & Standards

- ASME A112.18.1/CSA B125.1
- ADA

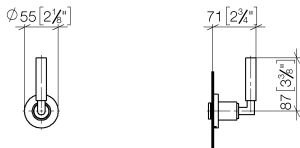
- Fittings group in compliance with DIN 4109: 2
- (ADA)



Brushed Chrome

Dimensional drawing

mm [inches]





Bathtub - TARA
Volume Control clockwise-closing 1/2" - Brushed Chrome
Article number: 36 607 882-93
Date of manufacture from 8/1/2021

All dimensions in mm / inch = mm x 0,0394

Other surface finishes



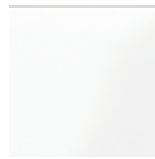
Chrome
36 607 882-00



Brushed Platinum
36 607 882-06



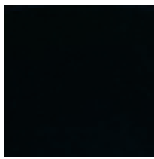
Platinum
36 607 882-08



White matte
36 607 882-10



Brushed brass (23kt gold)
36 607 882-28



Black matte
36 607 882-33



Brushed champagne (22kt gold)
36 607 882-46



Champagne (22kt Gold)
36 607 882-47



Brushed Dark Platinum
36 607 882-99

More custom finish options are available via special production (xTra Service). See our finish matrix for availability and pricing or contact a Dornbracht representative. Some series may be excluded and some finishes may not be available in all series.



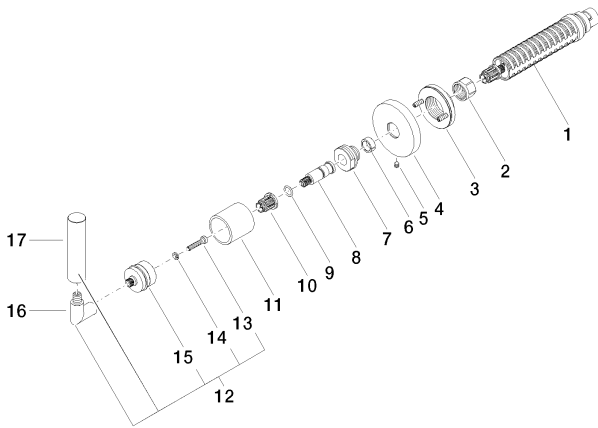
Bathtub - TARA

Volume Control clockwise-closing 1/2" - Brushed Chrome

Article number: 36 607 882-93

Date of manufacture from 8/1/2021

Spare parts list



Number	Item Number	Designation	Number of units
1	90 90 03 143 00 90	top	1
2	09 23 30 023 90	nut	1
3	90 21 02 108 00 90	disc	1
4	09 27 89 115-93	rosette	1
5	09 31 11 007 90	pin	1
6	09 14 15 020 90	ring	1
7	09 24 05 002 90	nipple	1
8	09 29 06 022 90	spindle	1
9	09 14 10 060 90	seal	1
10	90 12 12 002 00 90	fixing cap	1
11	09 21 02 144-93	sleeve	1
12	04 20 88 052 00-93	handle	1
13	09 30 30 075 90	screw	1
14	09 30 11 029 90	disc	1
15	90 12 12 007 00-93	base	1
16	04 18 20 022 00-93	angle	1
17	09 20 88 052-93	handle	1