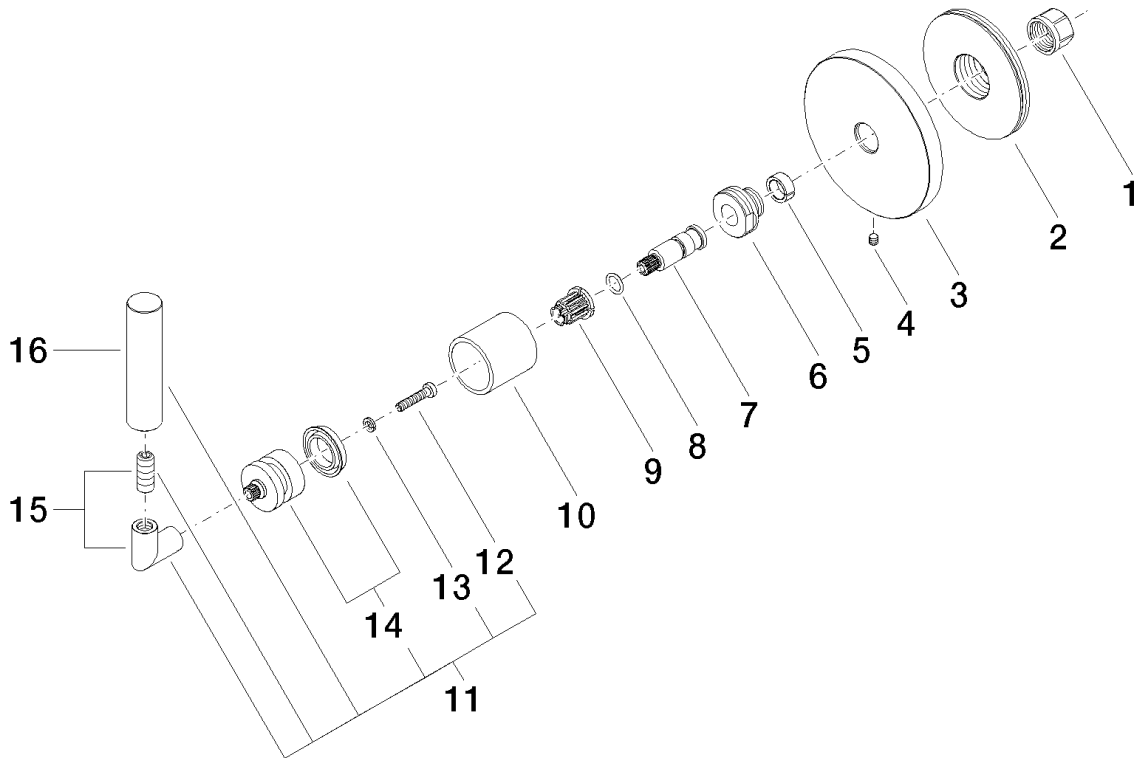


Exploded assembly drawing



Order quantity

| No. | Article number | Name | Installation quantity |
|------------|-----------------------|-------------|------------------------------|
| 1 | 09233002390 | nut | 1 |
| 2 | 09210210990 | cover | 1 |
| 3 | 092789111ff | rosette | 1 |
| 4 | 09311100790 | pin | 1 |
| 5 | 09141502090 | ring | 1 |
| 6 | 09240500290 | nipple | 1 |
| 7 | 09290602290 | spindle | 1 |
| 8 | 09141006090 | seal | 1 |
| 9 | 09121200290 | fixing cap | 1 |
| 10 | 092102144ff | sleeve | 1 |
| 11 | 04208805200ff | handle | 1 |
| 12 | 09303007590 | screw | 1 |
| 13 | 09301102990 | disc | 1 |
| 14 | 90121200700ff | base | 1 |
| 15 | 04182002200ff | angle | 1 |
| 16 | 092088052ff | handle | 1 |