




Flush Valves

DUAL FLUSH SOLAR FLUSH VALVE for 1-1/2" top spud WATER CLOSET with SENSOR ON VALVE - maximum 11-1/2" height (c/l of inlet to base of outlet)

Model No: 81T201SP-DF-MMO

COMPLIES WITH:

- IAPMO listed to ASSE 1037/ ASME A112.1037/ CSA B125.37
-  Indicates compliance to ICC / ANSI A117.1
- Patented
- (Contact Delta Representative for State and/or Local Approvals)



SPECIFICATION:

- Polished chrome-plated vandal resistant metal cover with top mounted electronic sensor and solar module
- **True mechanical manual override button**
- Override button activation will always produce a full flush
- Right or left-hand supply installation
- ADA compliant, automatic operation with infrared sensor
- Designed for indoor lighting conditions and will operate in high or low brightness levels
- Compatible in environments with occupancy lighting
- Scratch resistant lens window
- Four (4) size AA alkaline batteries factory installed (required and included) with valve in shipping mode for easy installation
- Battery strength indicator with low battery warning light
- Supplied with an advanced infrared sensor activated flush system that uses multiple detection distances along with a bowl length setting to react appropriately to different usage patterns
- Optional 24 hour automatic flush factory set to off
- Set-up sensor range adjustment indicator lights
- 6 second arming delay
- Quiet action, TECK® exposed diaphragm flush valve
- Chloramine resistant diaphragm
- Renewable seat
- Polished chrome-plated body
- Optional dual flush setting capability factory set to on providing average 30% water reduced flush based on time and distance
- External water conserving flush adjustment: Factory set to 6 Litre(1.6 Gal.) - Field Adjustable from 4.2L to 25L (1.1 to 6.6 Gal.)

OPERATION:

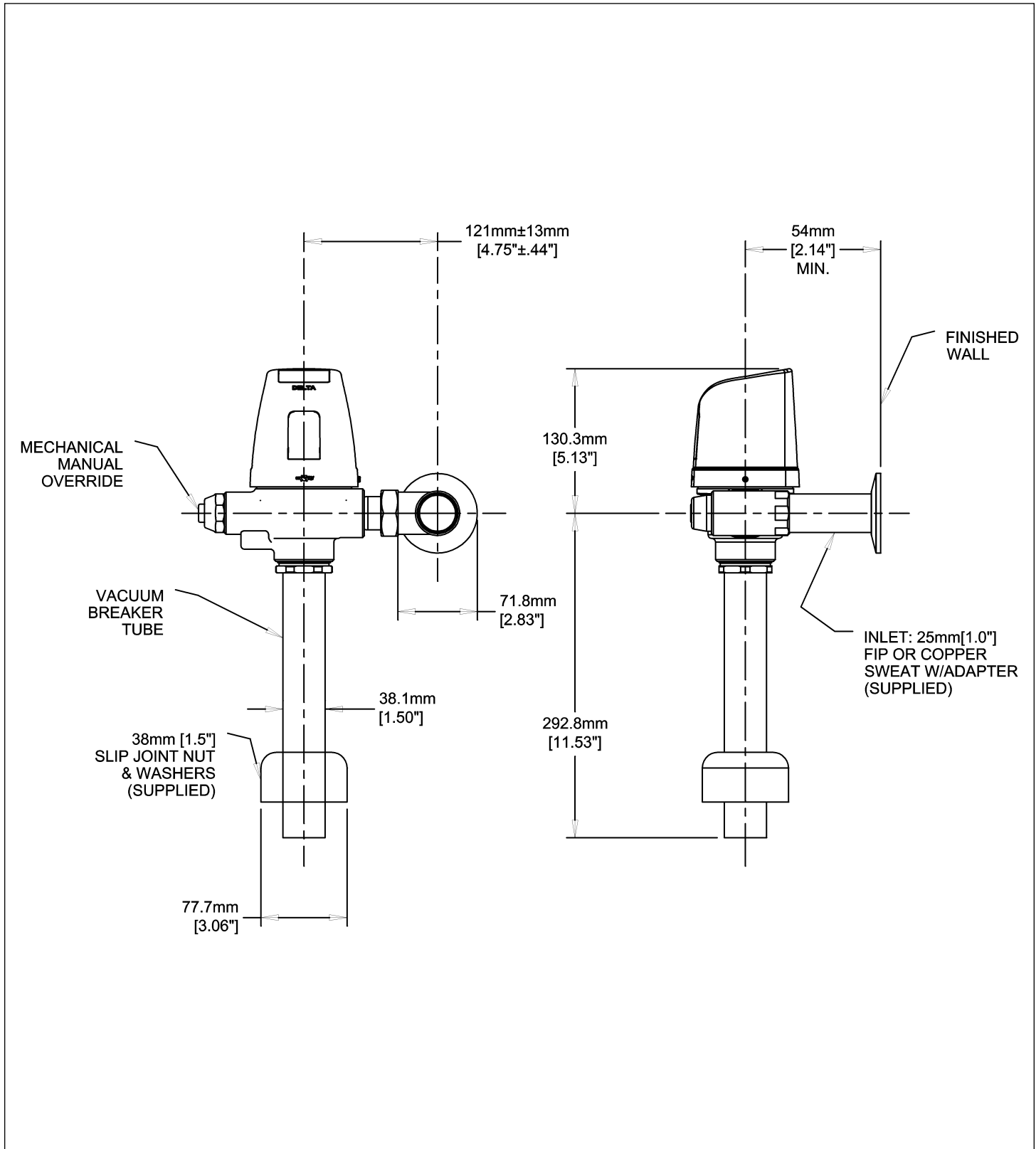
- **Recommended water supply:**
Minimum flowing pressure – 25 psi (172 kPa)
Minimum flow rate – 25 gpm (95 L/min)

(Dimensional drawing on following page)

Delta reserves the right (1) to make changes to specifications and materials, and (2) to change or discontinue models, both without notice or obligation. Dimensions are for reference. Measurement may vary plus or minus 6mm(0.25"). Mounting locations are suggested only. Check with local codes for requirements in your area. This spec was produced April 20, 2021.

Delta Faucet Company - 55 East 111th St. - Indianapolis, Indiana, USA 46280 - (317) 848-1812
Delta Faucet Canada - 395 Matheson Blvd E - Mississauga, Ontario, Canada L4Z 2H2 - (905) 712-3030

Model No: 81T201SP-DF-MMO



Delta reserves the right (1) to make changes to specifications and materials, and (2) to change or discontinue models, both without notice or obligation. Dimensions are for reference. Measurement may vary plus or minus 6mm(0.25"). Mounting locations are suggested only. Check with local codes for requirements in your area. This spec was produced April 20, 2021.

Delta Faucet Company - 55 East 111th St. - Indianapolis, Indiana, USA 46280 - (317) 848-1812
 Delta Faucet Canada - 395 Matheson Blvd E - Mississauga, Ontario, Canada L4Z 2H2 - (905) 712-3030