




Electronic Faucets

Hardwire (Product supplied with an RP32494
Converter to convert 24VAC to 6.4 VDC)
Recessed Control Box

Model No: 591T0258TR

COMPLIES WITH:

- CSA certified.
- Complies to ASME A112.18.1/CSA B125.1
-  Indicates compliance to ICC/ANSI A117.1
- Patented
- Verified compliant with 0.25% weighted average Pb content regulations
- NOTE 1: For optimum performance of this product, we recommend a system pressure between 20 and 80 PSI static. This product will operate up to a maximum of 125 PSI static per ANSI and CSA requirements. However, we do not recommend pressures above 80 PSI. Thermal expansion or leaking pressure reducing valves may require use of expansion tanks or relief valves to ensure your system never exceeds its maximum intended pressure setting.
- CSA Certified
- Complies with ASME A112.18.1
- ADA compliant and meets Handicapped Accessibility Standard ANSI 117.1 of less than 5 lbs. Handle operating force.
- Control box Option #6 is CSA certified
- Control box Option #8 is CSA certified an
- (Contact Delta Representative for State and/or Local Approvals)



NOTES:

For Additional Hi Rise Electronic Faucet models, see Electronic -Delta HDF

Control Box(8TR) -NOTES:

Supplied as trim parts only - includes Stainless Steel Cover, Solenoid and Driver Board

Requires Rough-in Product Number ELAVT0008ARI OR ELAVT0001ARI to be ordered separately - see ELAVT0008ARI or ELAVT0001ARI

(Dimensional drawing on following page)

SPECIFICATION:

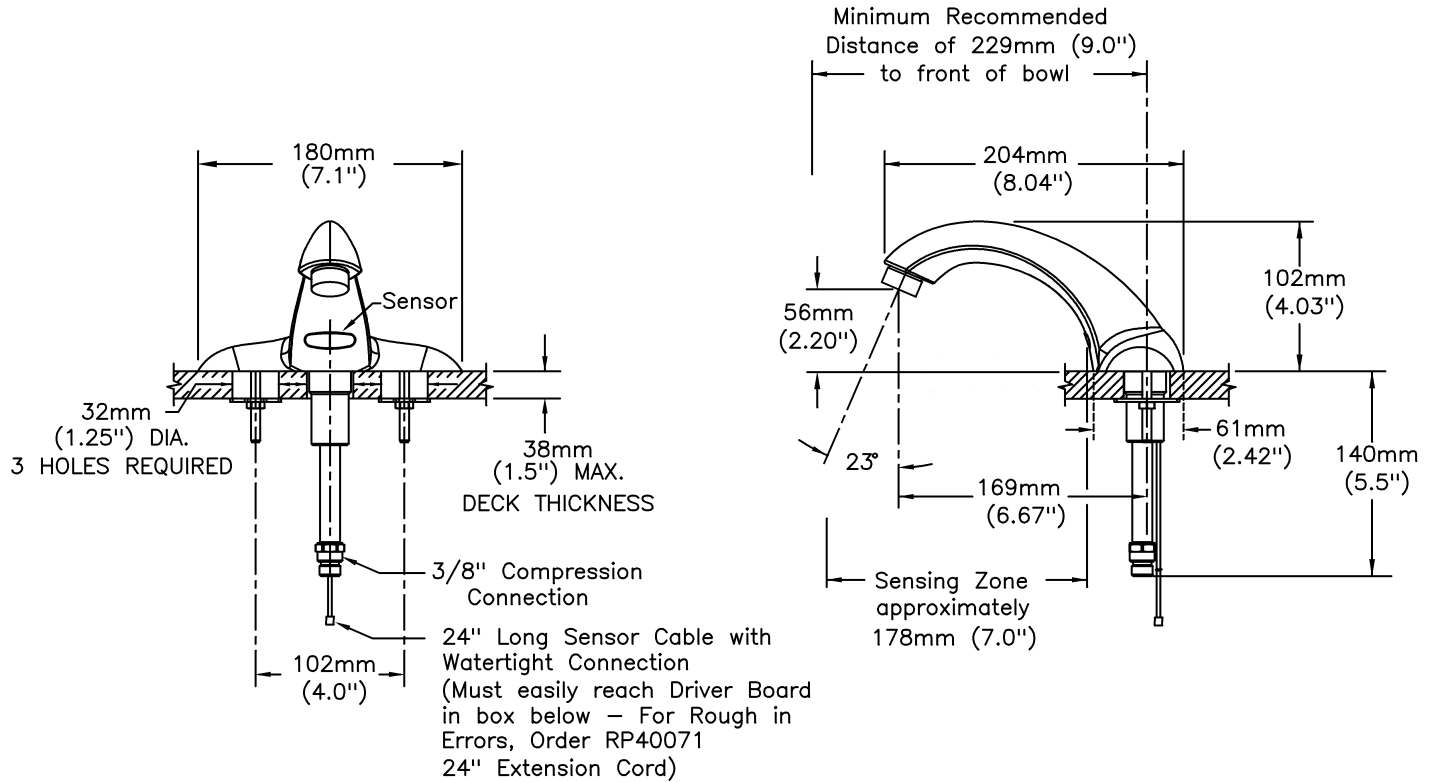
- Hard Wire 102mm (4") electronic faucet Cast one-piece body with integral waterproof sensor and connector DMD self-adaptive Technology*-no external adjustments required Serviceable filter screen upstream of solenoid valve Metal hold-down package Hands free
- Spout#: 2 - 4" (102mm) Cast Lavatory Spout
- Outlet#: 5 - Vandal Resistant 0.5 gpm (1.9 L/min) Laminar Outlet
- Supplied as trim parts only – requires separate order of ELAVT0001ARI or ELAVT0008ARI rough-in to have complete product
- AC filter required for hardwire Proximity® models. One (1) AC filter for up to 5 valves.
- Multi-unit transformer required for hardwire Proximity® models - see 060771A, RP32508, or 060704A

OPERATION:

- Hands free (touchless) operation.
- Water flows when sensor is activated.
- Water flow stops upon de-activation of sensor.
- Adjustable auto shut-off feature. Factory set to 45 seconds. Will reset once obstruction is removed.
- Adjustable sensing distance 76 to 381mm (3" to 15") factory set to 229mm (9") ($\pm 3.0"$)
- Low battery audible beep (for battery models only) will activate after faucet shuts off when approximately 1500 cycles remain.
- Metering mode with selectable flow times of 7 seconds to 4 minutes, factory set off.
- Periodic Rinse feature, time adjustable in 6 hour increments up to 2 days. Selectable rinsing lengths from 10 to 180 seconds. Factory set off.

Delta reserves the right (1) to make changes to specifications and materials, and (2) to change or discontinue models, both without notice or obligation. Dimensions are for reference. Measurement may vary plus or minus 6mm(0.25"). Mounting locations are suggested only. Check with local codes for requirements in your area. This spec was produced April 13, 2021.

Delta Faucet Company - 55 East 111th St. - Indianapolis, Indiana, USA 46280 - (317) 848-1812
Delta Faucet Canada - 395 Matheson Blvd E - Mississauga, Ontario, Canada L4Z 2H2 - (905) 712-3030



Delta reserves the right (1) to make changes to specifications and materials, and (2) to change or discontinue models, both without notice or obligation. Dimensions are for reference. Measurement may vary plus or minus 6mm(0.25"). Mounting locations are suggested only. Check with local codes for requirements in your area. This spec was produced April 13, 2021.

Delta Faucet Company - 55 East 111th St. - Indianapolis, Indiana, USA 46280 - (317) 848-1812
 Delta Faucet Canada - 395 Matheson Blvd E - Mississauga, Ontario, Canada L4Z 2H2 - (905) 712-3030