



1-1/2" GRAB BARS WITH EXPOSED FLANGES, SATIN FINISH TECHNICAL SPECIFICATION

Job Name _____	Item # _____
Location _____	
Engineer _____	Contractor _____
PO # _____	Tag _____
Representative _____	

SPECIFICATIONS

Dearborn Brass Stainless Steel Grab Bars are designed for use in hospitals, hotels, government facilities, commercial building and residential home settings. ADA Compliant.

DESCRIPTION

- Satin Finish
- Bar 18 ga. 304 Stainless Steel
- Flange: 14 ga. 304 Stainless Steel
- Screws: #10 x 2" Self Tapping Stainless Steel

APPROVALS AND LISTINGS

ASTM F 446 with 1-1/2" clearance
ANSI A117.1

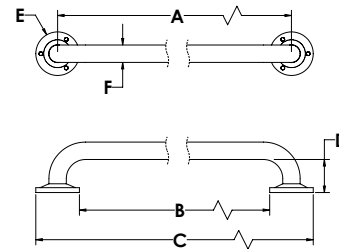
PRODUCT SELECTOR

1-1/2" GRAB BARS WITH EXPOSED FLANGES, SATIN FINISH				
✓	Product Number	Size	Description	Carton Quantity
	DB7518	1-1/2" x 18"	Stainless Steel Grab Bar w/ Exposed Flange, Satin Finish	4
	DB7424	1-1/2" x 24"	Stainless Steel Grab Bar w/ Exposed Flange, Satin Finish	4
	DB7532	1-1/2" x 32"	Stainless Steel Grab Bar w/ Exposed Flange, Satin Finish	4
	DB7536	1-1/2" x 36"	Stainless Steel Grab Bar w/ Exposed Flange, Satin Finish	4
	DB7542	1-1/2" x 42"	Stainless Steel Grab Bar w/ Exposed Flange, Satin Finish	4

Data is subject to manufacturing tolerances.

DIMENSIONS

[A]:	Length A	See Chart A.1	[D]	Height D	1.75"
[B]:	Length B	See Chart A.1	[E]	Diameter E	3"
[C]:	Length C	See Chart A.1	[F]	Diameter F	1.25"



A.1 - LENGTHS				
	Size 1-1/2" x 18"	Size 1-1/2" x 24"	Size 1-1/2" x 36"	Size 1-1/2" x 42"
Length A	18"	24"	36"	42"
Length B	15"	21"	33"	39"
Length C	21"	27"	39"	45"

Access BIM/Revit content through www.oatey.com