



# 1-1/2" BRANCH TAILPIECES, HOSE & CLAMP, THREADED TOP TECHNICAL SPECIFICATION

Job Name _____	Item # _____
Location _____	
Engineer _____	Contractor _____
PO # _____	Tag _____
Representative _____	

## SPECIFICATIONS

Dearborn Brass 1-1/2" Brass Tubular Branch Tailpieces With Hose & Clamp are designed for use in tubular drain applications.

## DESCRIPTION

- Chrome or Unfinished Brass Finish
- Branch Tailpiece with Hose & Clamp Connection
  - (1) Branch Tailpiece

## APPROVALS AND LISTINGS



## PRODUCT SELECTOR

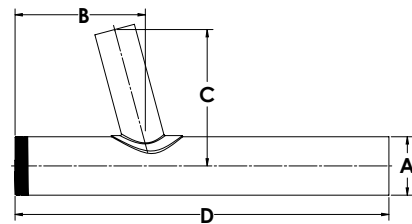
### 1-1/2" BRANCH TAILPIECES, HOSE & CLAMP, THREADED TOP

✓	Product Number	Size	Description	Carton Quantity
	814TB-1	1-1/2" x 8"	Branch Tailpiece, Hose & Clamp, Threaded Top - 20 Ga.	10

Data is subject to manufacturing tolerances.

## DIMENSIONS

[A]:	Diameter A	1.5"	[F]:	Height C	2.92"
[B]:	Length B	2.0"	[G]:	Length D	8"



Access BIM/Revit content through [www.oatey.com](http://www.oatey.com)