



# 1-1/2" WALL TUBES TECHNICAL SPECIFICATION

Job Name _____	Item # _____
Location _____	
Engineer _____	Contractor _____
PO # _____	Tag _____
Representative _____	

## SPECIFICATIONS

Dearborn Brass 1-1/2" Brass Tubular Wall Tubes are designed for use in tubular drain applications. Available in 17 or Budget Gauge Brass.

## DESCRIPTION

- Chrome Plated
- Wall Tube
  - (1) Quarter Bend Tube

## APPROVALS AND LISTINGS



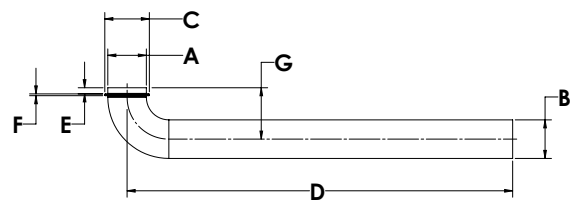
## PRODUCT SELECTOR

1-1/2" WALL TUBES				
✓	Product Number	Size	Description	Carton Quantity
	2402A-1	1-1/2"	Wall Tube 11.25" - Budget Ga.	10
	402-17-1	1-1/2"	Wall Tube 8.25" - 17 Ga.	10
	402A-17-1	1-1/2"	Wall Tube 11.25" - 17 Ga.	10
	402B-17-1	1-1/2"	Wall Tube 15" - 17 Ga.	10
	402C-17-1	1-1/2"	Wall Tube 21" - 17 Ga.	25
	402D-17-1	1-1/2"	Wall Tube 33" - 17 Ga.	25
	402E-17-1	1-1/2"	Wall Tube 45" - 17 Ga.	20
	402F-17-1	1-1/2"	Wall Tube 57" - 17 Ga.	20

Data is subject to manufacturing tolerances.

## DIMENSIONS

[A]:	Diameter A	1.5"	[E]:	Height D	0.24"
[B]:	Diameter B	1.5"	[F]:	Thickness	0.07"
[C]:	Diameter C	1.7"	[G]:	Height G	2"
[D]:	Length D	See Chart A.1			



A.1 - LENGTHS							
	8.25" Wall Tube	11.25" Wall Tube	15" Wall Tube	21" Wall Tube	33" Wall Tube	45" Wall Tube	57" Wall Tube
<b>Length D:</b>	8.125"	11.25"	15"	21"	33"	45"	57"

Access BIM/Revit content through [www.oatey.com](http://www.oatey.com)