



CENTER OUTLET WASTE HI-LINE TECHNICAL SPECIFICATION

Job Name _____	Item # _____
Location _____	
Engineer _____	Contractor _____
PO # _____	Tag _____
Representative _____	

SPECIFICATIONS

Dearborn Brass 1-1/2" Brass Tubular Center Outlet Waste with Hi-Line Connection is designed for use in tubular drain applications. Available in 17, 20 or Budget Gauge Brass. Options include 16" or 21" lengths and Baffle Tee.

DESCRIPTION

- Chrome Finish
- Center Outlet Waste
 - (2) Waste Arms
 - (1) Tailpiece
 - (1) Twin Tee
 - (2) Zinc Nuts
 - (2) Rubber Washers

APPROVALS AND LISTINGS



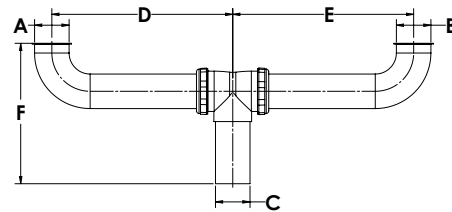
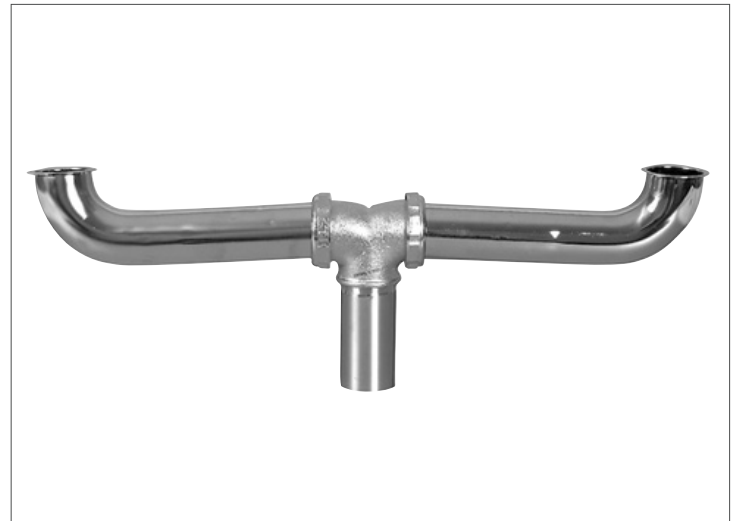
PRODUCT SELECTOR

CENTER OUTLET WASTE HI-LINE				
✓	Product Number	Size	Description	Carton Quantity
	2123A-1	1-1/2" x 16"	Center to Center, Hi-Line - Budget Gauge	5
	123A-1	1-1/2" x 16"	Center to Center, Hi-Line - 20 Gauge	5
	133A-1	1-1/2" x 16"	Center to Center, Hi-Line - 17 Gauge	5
	83A-1	1-1/2" x 16"	Center to Center, Hi-Line - 20 Gauge - with Baffle Tee	5

Data is subject to manufacturing tolerances.

DIMENSIONS

[A]:	Size A	1.50"	[D]:	Approximate Height	8.0"
[B]:	Size B	1.50"	[E]:	Approximate Height E	8.0"
[C]:	Length C	1.50"	[F]:	Approximate Height F	5.8"



Access BIM/Revit content through www.oatey.com