

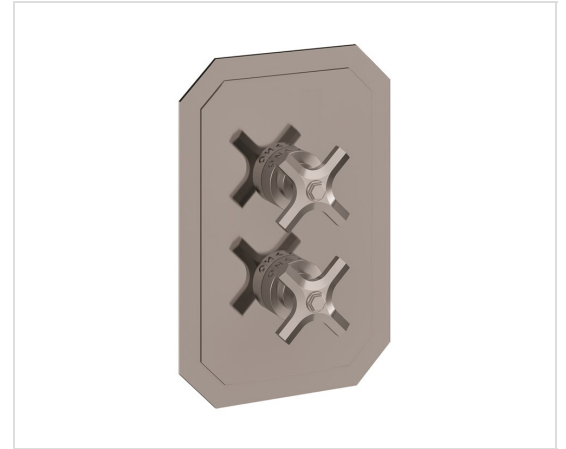
WALDORF 2500 THERMOSTATIC VALVE TRIM WITH INTEGRATED VOLUME CONTROL/THREE-WAY DIVERTER AND CROSS HANDLES

Stainless (12-week leadtime)

US-WF2500RS

FEATURES

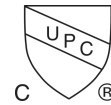
- A modern interpretation of Art Deco excellence, Waldorf blends geometric intricacy with softened lines for a striking profile
- Single integrated volume control/diverter for 3 water outlets
- Required rough features Vernet thermostatic cartridge
- The thermostatic valve senses and controls the actual water temperature and blends hot water with cold water to ensure constant, safe temperatures, preventing scalding.
- Required rough (sold separately): US-WLBP2500R



SPECIFICATIONS

Number of water outlets	3
Handle style	Cross
Flow rate	12 GPM
Inlet connection size	3/4" NPT
Outlet connection size	3/4" NPT
Water pressure minimum	20 PSI
Water pressure maximum	Operating pressure of 60 PSI and static pressure of 144 PSI
Installation type	Concealed
IAPMO	Yes
State of MA	Yes
Extension kit	EK101525

✓ Limited lifetime. Commercial



Waldorf 1000/1500/2500 Thermostatic Valve Trim

US-WF1000R

US-WF1500R

US-WF2500R

