

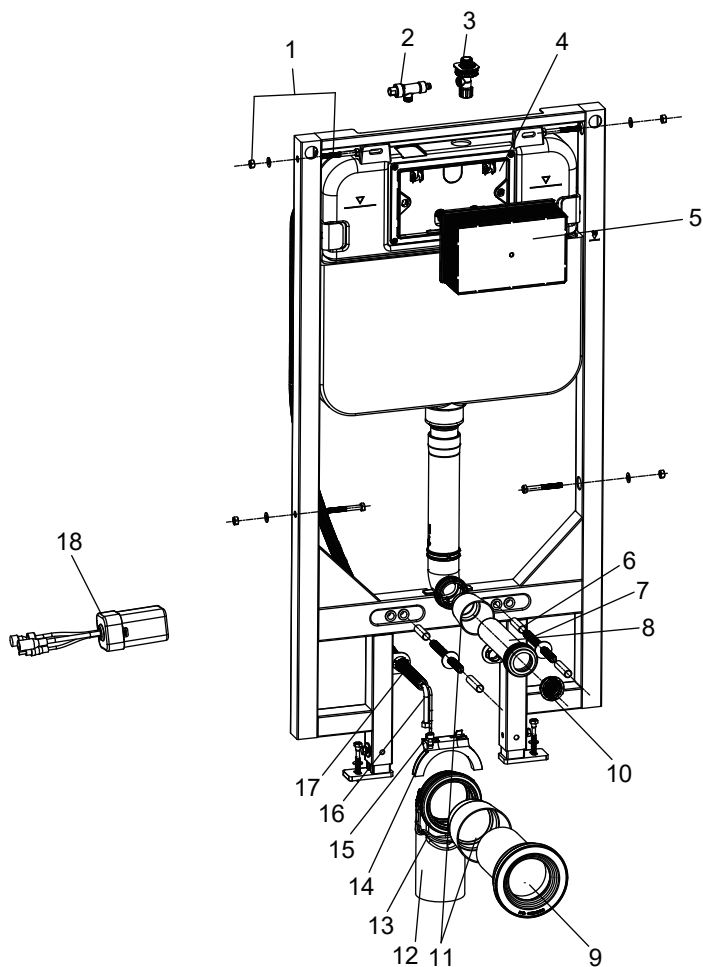
Ressa wall-hung, tank/cistern
US-RS200-TC
INSTALLATION MANUAL



Thank you for your purchase of the Ressa wall-hung, tank/cistern. We are committed to providing exceptional service. Please contact us at any time should you have questions about your products. Please read the instructions carefully before installation and keep available for future maintenance or reference.

Parts Supplied

CHECK TO MAKE SURE THAT ALL THESE PARTS ARE INCLUDED IN THE PACKAGE.



NO.	Description	Qty	Function
1	Screws	4	Fixation of concealed cistern
2	3-way connector	1	Connecting inlet valve, hose for toilet water inlet and water supply adapter
3	On/off valve 1/2 NPT	1	For water supply
4	Cistern cover	1	To fix the bracket and seal the cistern
5	Protective shield	1	For flush plate installation
6	Protective sleeves	4	To protect connecting bolts
7	Connecting bolts	2	To mount ceramic bowl
8	Flushing pipe	1	Jointing flushing cistern to ceramic bowl (cutting in accordance with wall thickness)
9	Discharge pipe	1	Jointing ceramic bowl to drainage trap (cutting in accordance with wall thickness)
10	Flow restrictor	1	To improve toilet water splashing
11	Protection plugs	2	To reserve space for flush pipe and discharge pipe.
12	Discharge trap	1	To discharge waste
13	Mounting bracket (bottom part)	1	To mount draining syphon
14	Mounting bracket (top part)	1	
15	Signal connection cord (12V)	1	Connecting toilet and tank for off-seat automatic flushing
16	Hose	1	Water inlet for smart toilet seat
17	Flexible pipe	2	Protecting water inlet hose and signal connection cord between smart toilet seat and tank
18	Off-seat automatic flushing module	1	To receive the flushing signal from remote control or control panel on the toilet.

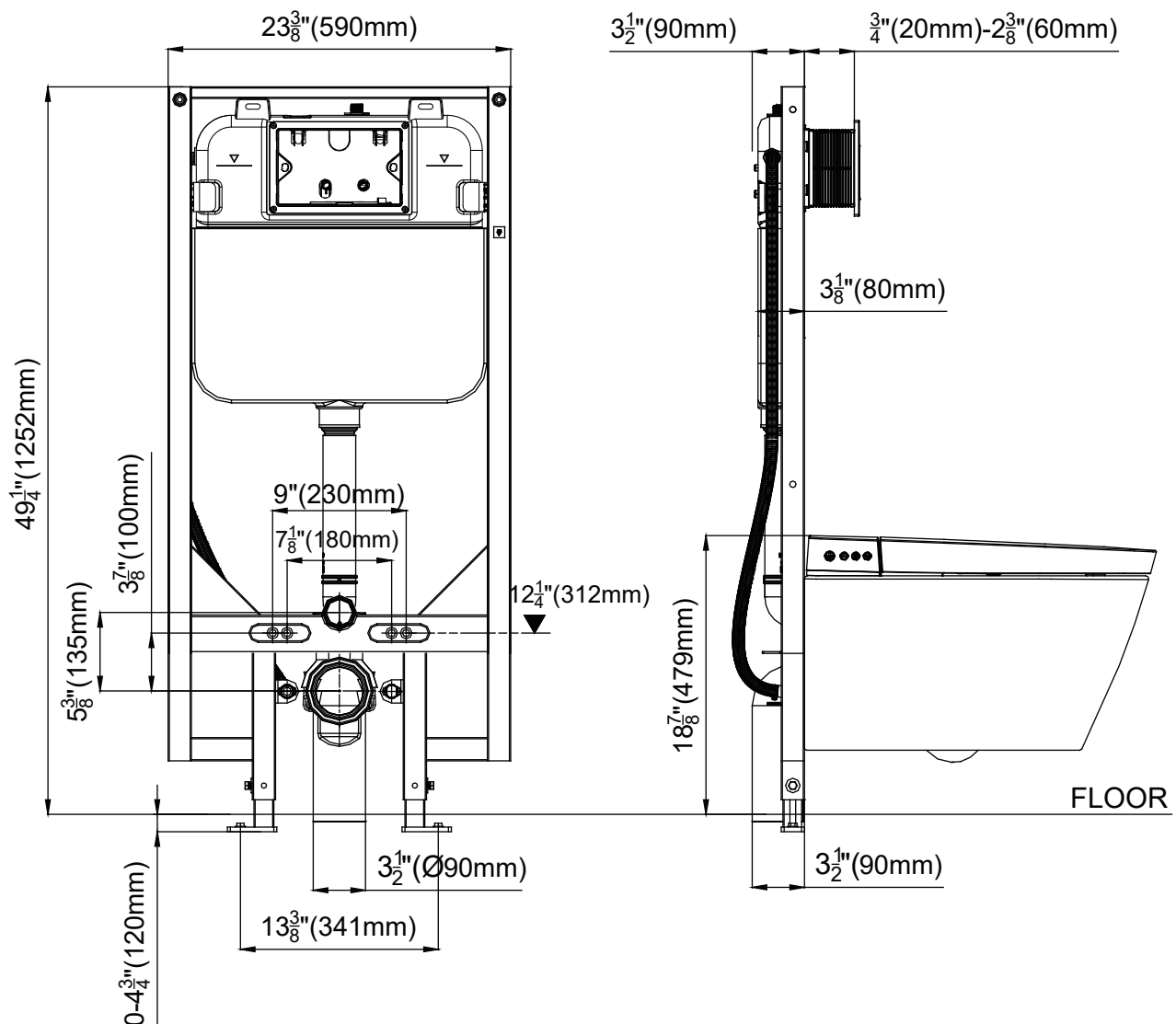
Product Specification

- Flush volume: 1.6/1.1gpf (6.0/4.1lpf)
- For installing 2-hole stud mounted wall-hung washdown water closet fixtures with rear water inlet and waste outlet.
- For installation in wood construction walls.
- Fits within minimum 31/2"(90mm) framing wall or plumbing chase.
- Adjustable for fixture seat heights from 121/4" to 17"(312mm to 432mm) for Ressa wall hung toilet.

Features

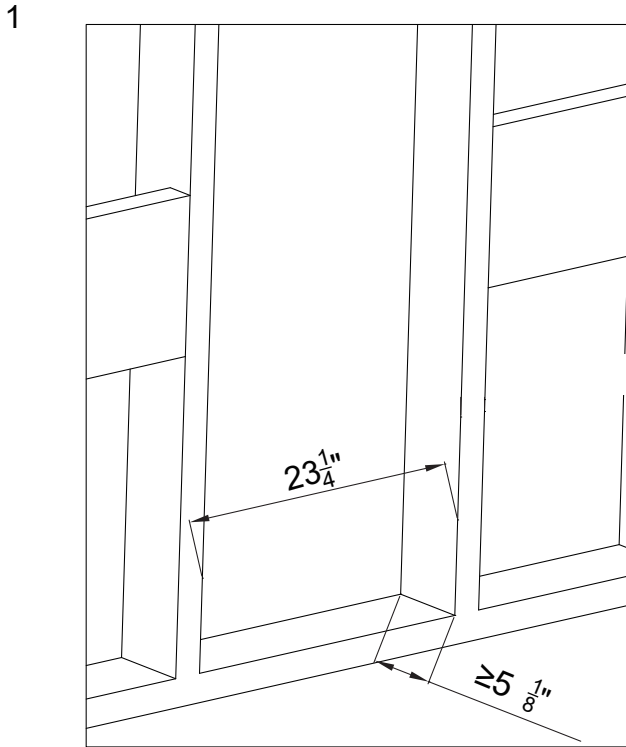
- Anti-siphon fill valve.
- Impact resistant high density polyethylene(HDPE) tank, insulated to prevent condensation.
- Powder-coated, structural steel tubing rated to 880 lbs. (400 kg) without damage to finished wall or carrier unit.
- Includes installation and rough-in materials.

Installation Dimensions

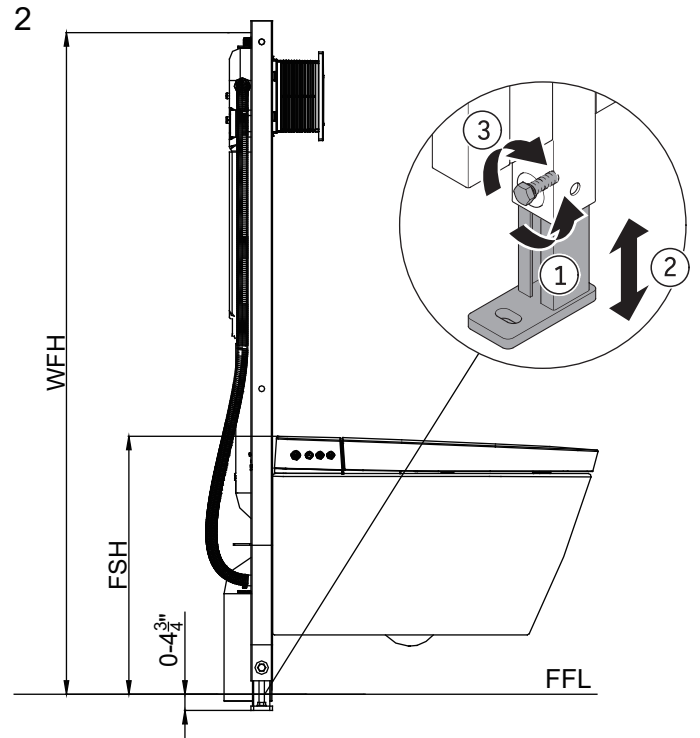


Installation

• Prepare



To install tank and carrier, a 2 x 4" or 2 x 6" wooded or metal frame construction is required.
Studs must be placed 23 1/4" apart (clearance) where carrier will be positioned inside the wall.
For 3 1/2" wall thickness vertical drainage only.
For 5 1/8" min. wall thickness RH, LH and vertical drainage possible.

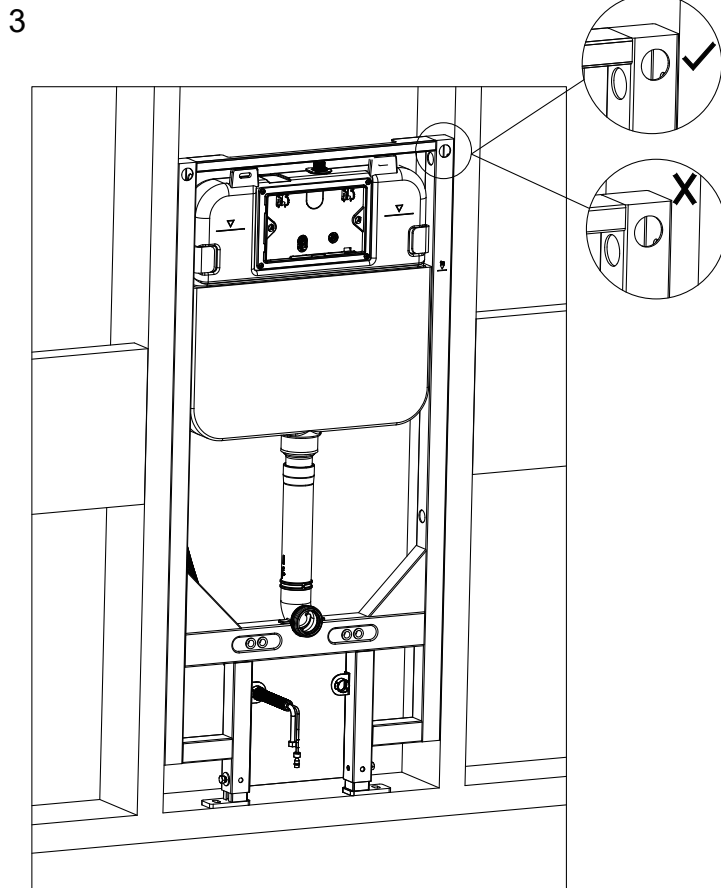


FFL: Finished Floor Level

FSH: Finished Seat Height (min 18 7/8" (479mm))

WFH: Wall Fixing Height (min 49 1/4" (1252mm))

Determine FFL by adjusting the feet of steel frame by changing the pin setting in the carrier foot.



Position carrier in frame to level. Adjust feet height as needed.

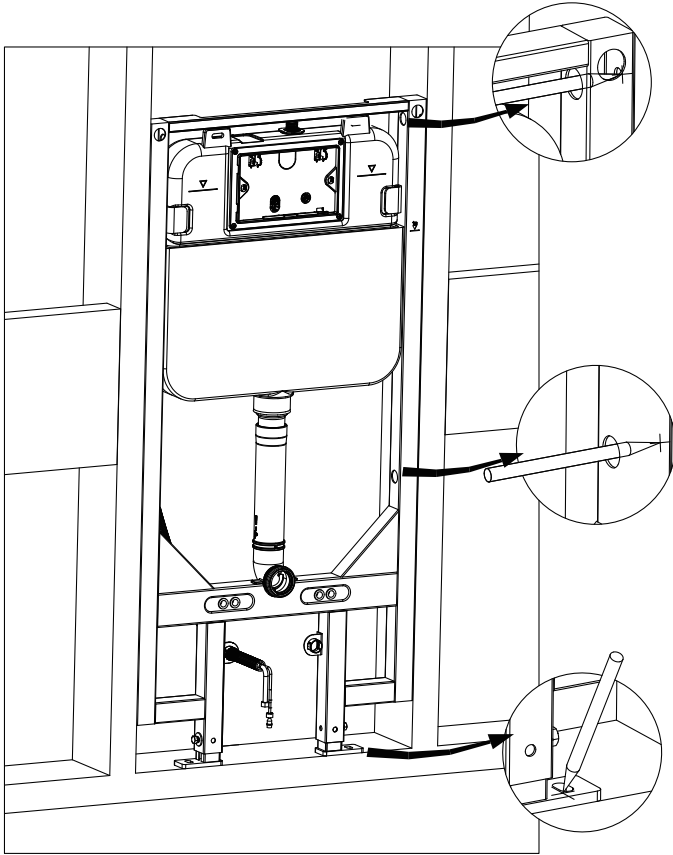
Note:

Carrier face plate must be flushed with front of the surrounding studs to accomplish maximum support for the wall sheeting (applied later).

• In Wall Carrier Installation:

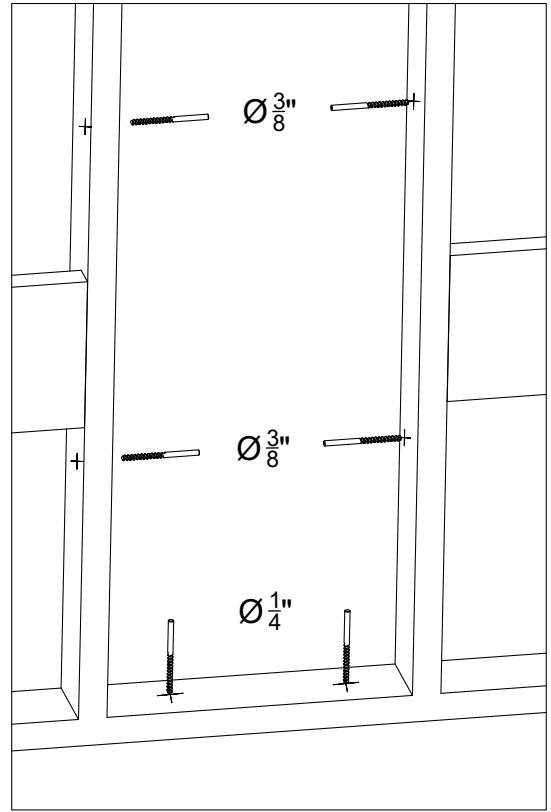
A. For wooden wall frame installation.

1



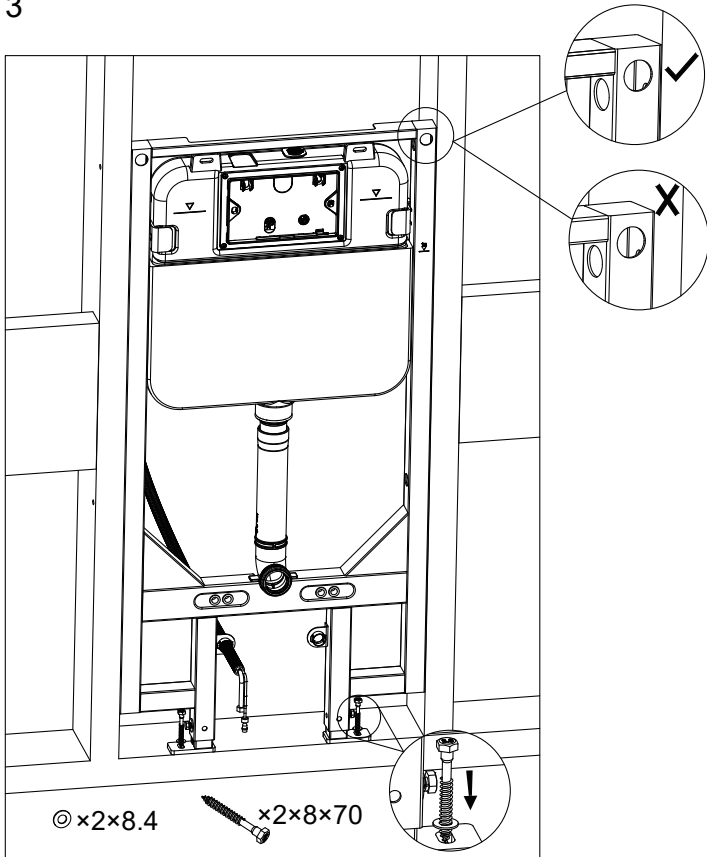
With the carrier in place, mark all anchor and bolt hole locations onto studs of wooden frame.

2



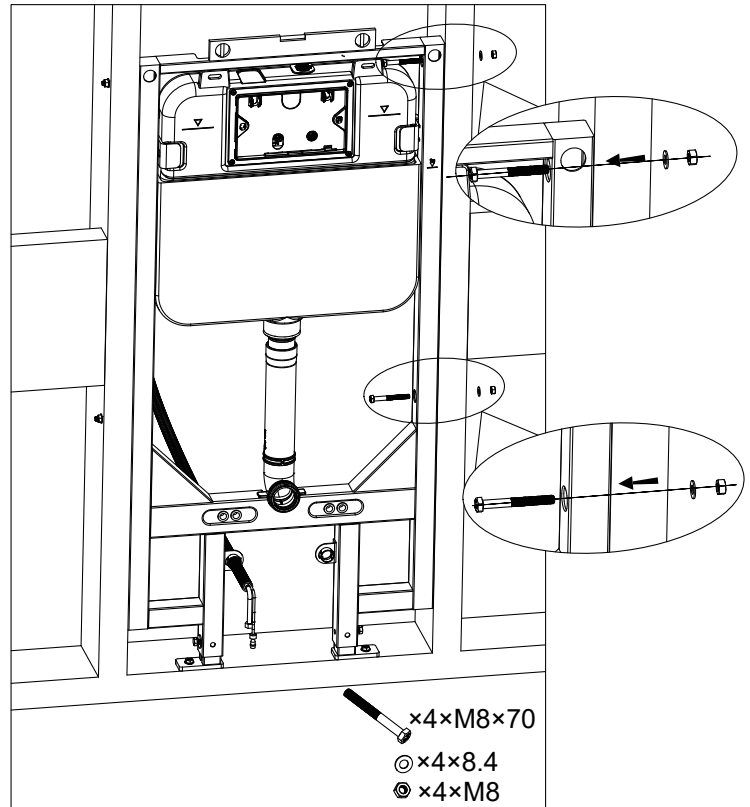
Remove carrier from wooden frame and drill holes.

3



Set carrier back in place and install anchor bolts on the base. With anchor bolts set, ensure carrier is flush to stud frame. Adjust as needed before installing side stud bolts.

4



With carrier set in place, secure carrier to studs by installing 4 stud bolts in marked locations. Ensure it is secure and even.

B. For metal wall frame installation.(Fittings are not supplied)

1

x2xM8 x2x8.4 x2x8x70

Drill out 2 marked 2/5"(10mm)anchor holes in the carrier base. Secure carrier feet in place within the frame using metal frame bolts.With anchor bolts set, ensure carrier is flush to metal frame front. Adjust as needed before installing side metal screws.

2

2 1/8" (550mm)
2 3/8" (60mm)
15 3/4" (400mm)

Install 6 self-tapping screws 12" apart into the metal to secure carrier within frame.

3

12"

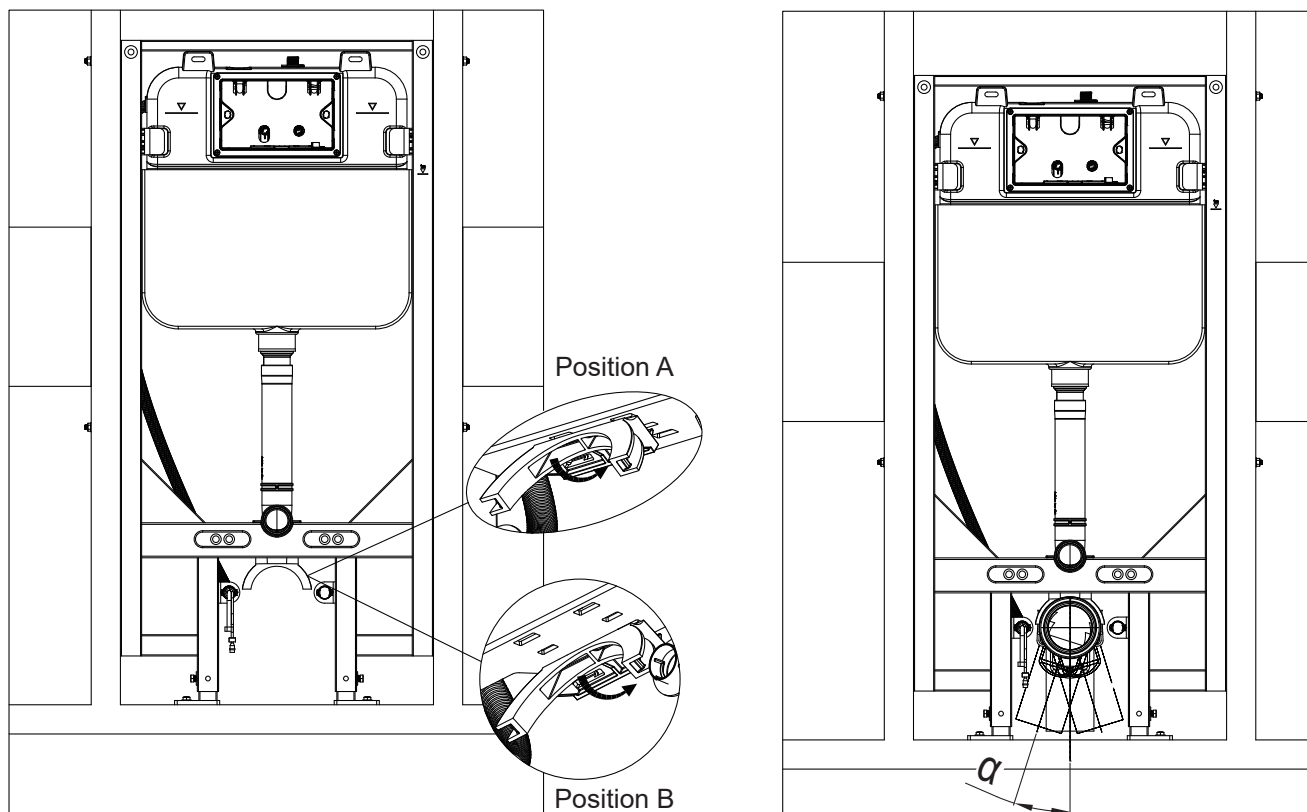
Install 2" or 3" wide 12ga studs that are connected to the floor and ceiling with mounting brackets for optimal support. Install additional 12"(30cm) lateral plywood or drywall reinforcement for studs thinner than 12ga.

4

Ensure it is secure and even.

Accessories installation:

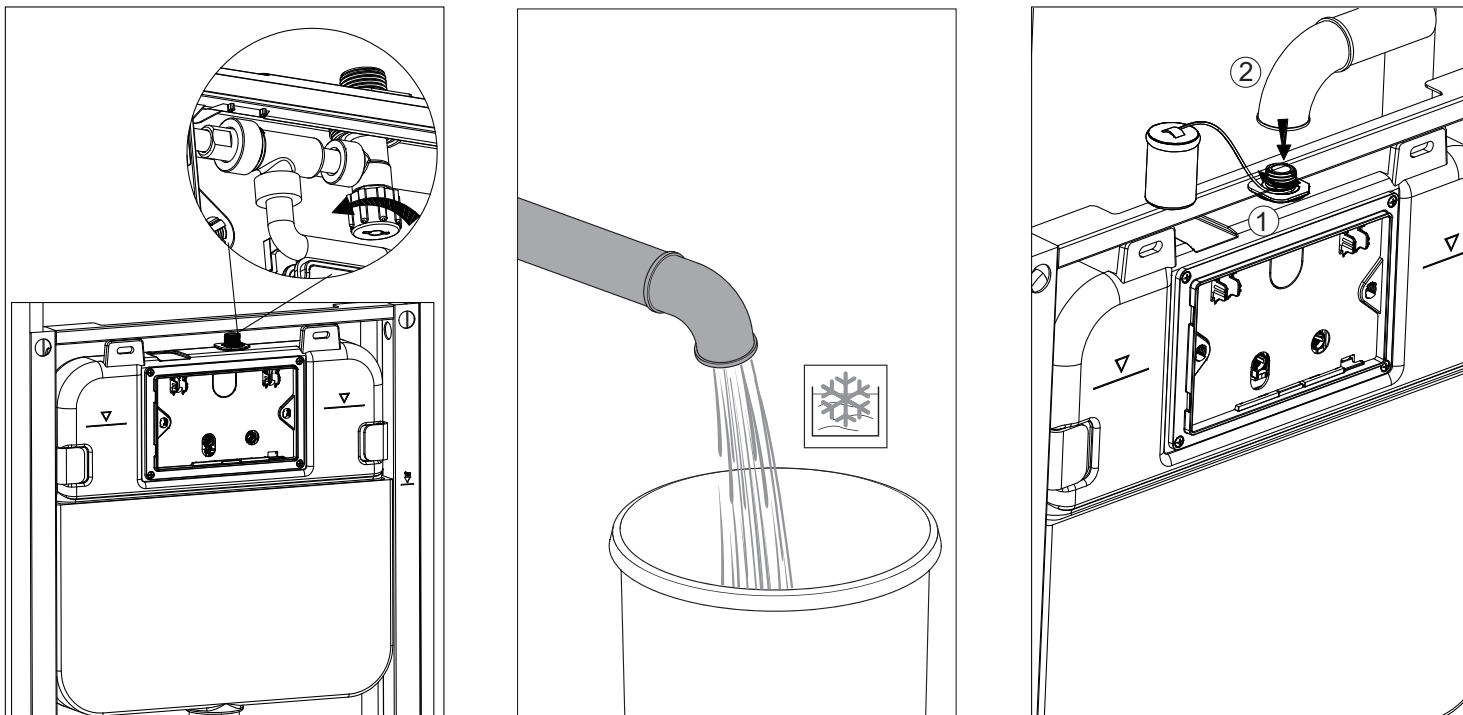
1



Position A: for 90° drop. use the front support holders.

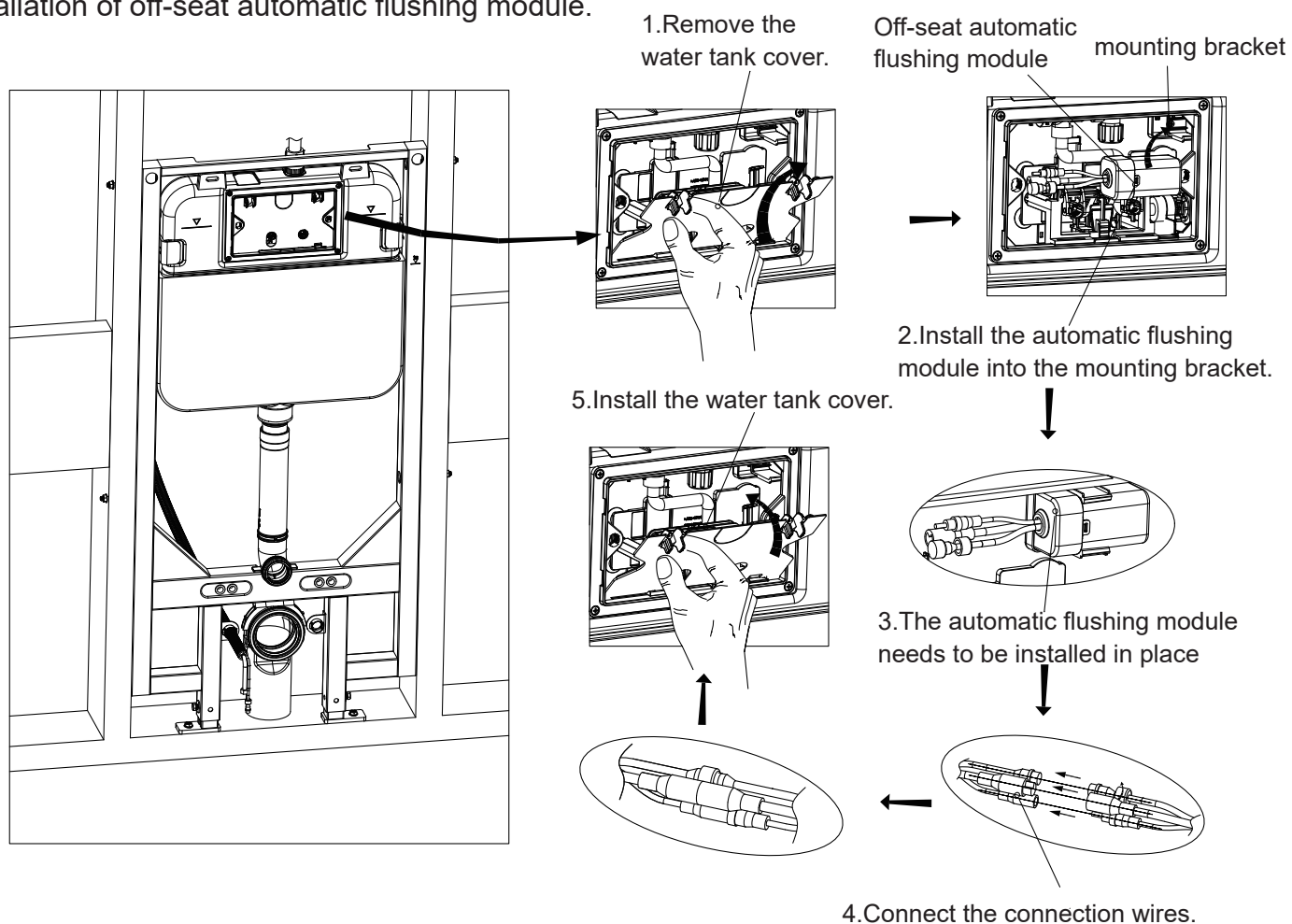
Position B: for 45° drop. use the rear support holders. Install waste outlet no more than 45° right or left with a minimum vertical drop of one pipe diameter before transitioning to horizontal pitch.

2

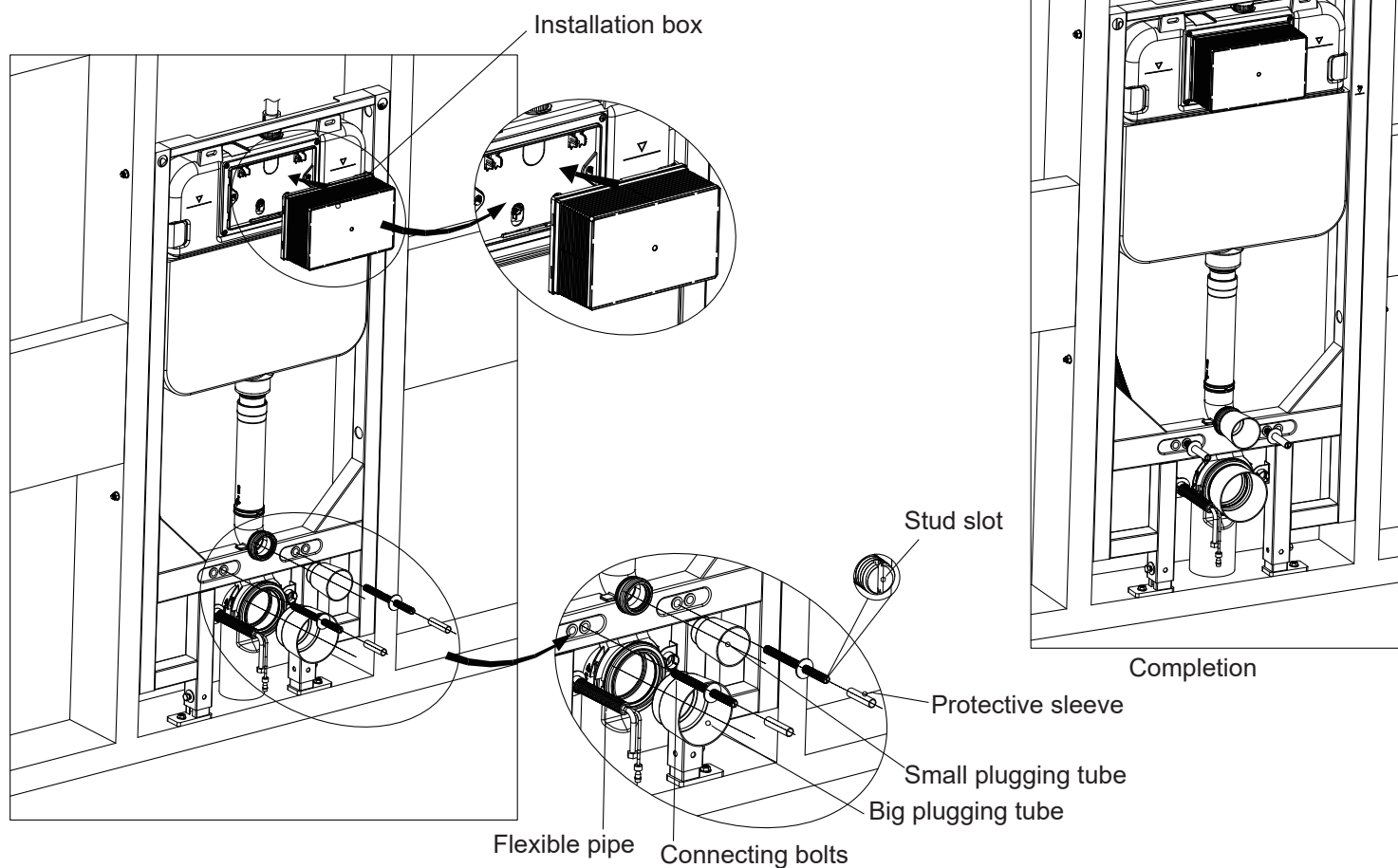


Remove actuator cover and ensure that the inlet on/off valve is completely turned off before connecting water supply. Purge the water into an empty bucket to ensure any debris is cleared out of water supply line. Apply teflon around threads and connect the water pipe.

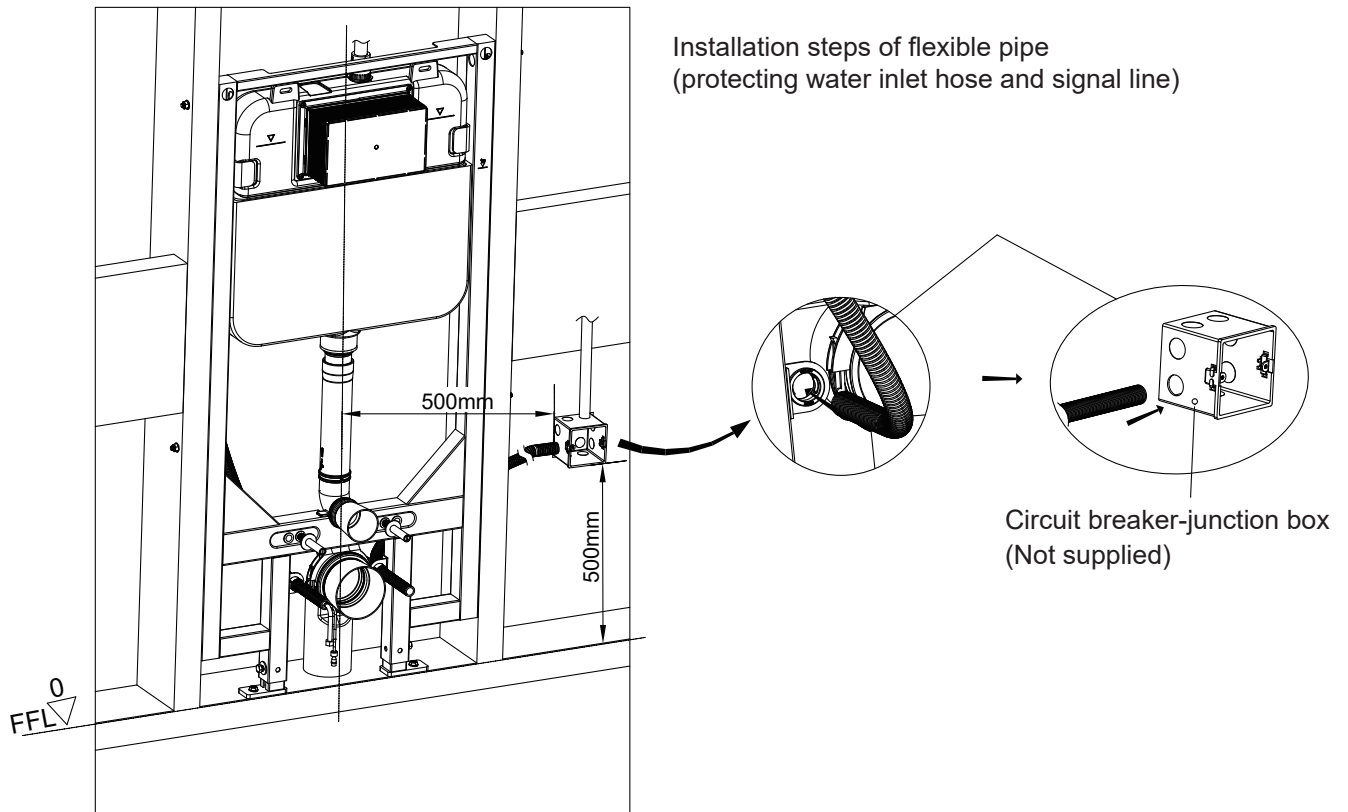
3 Installation of off-seat automatic flushing module.



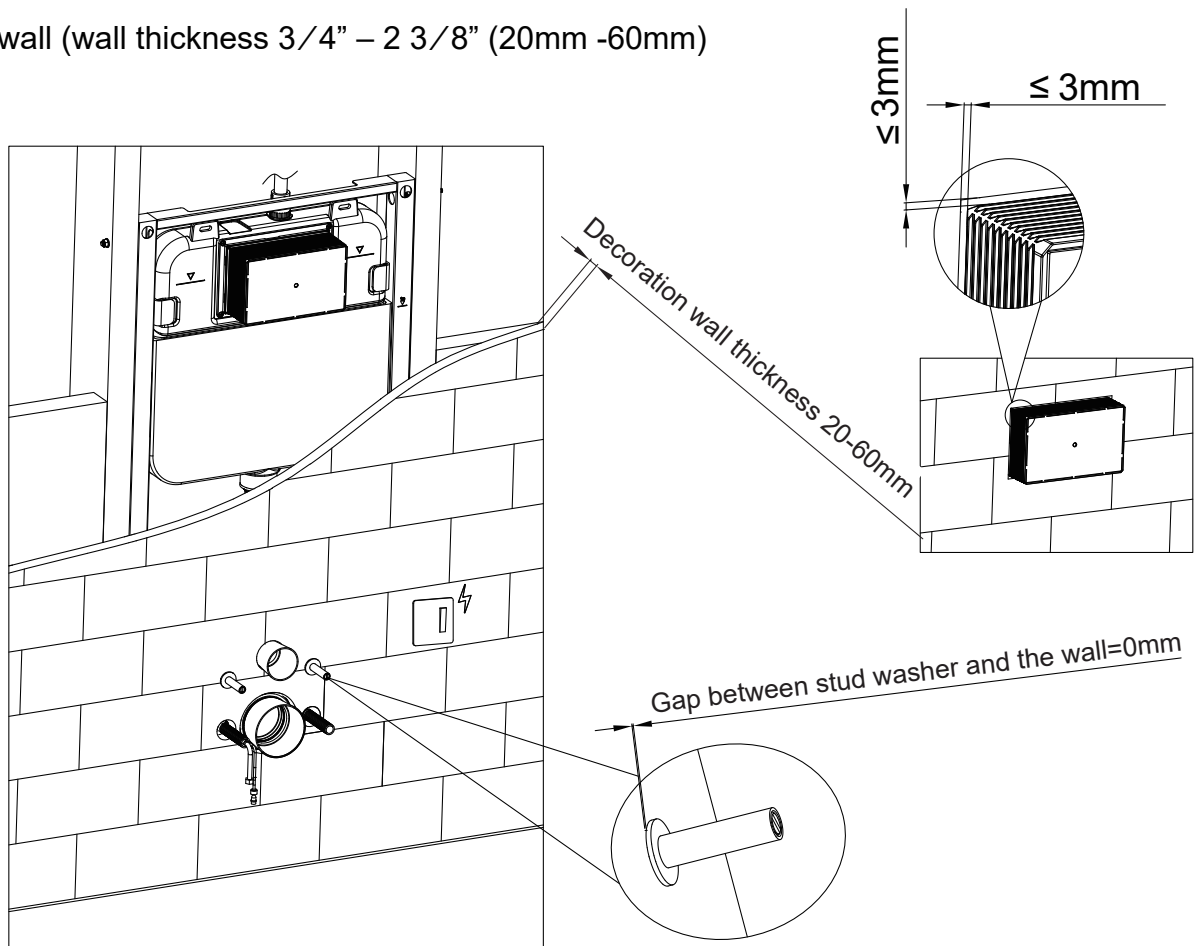
4 Mounting of installation accessories



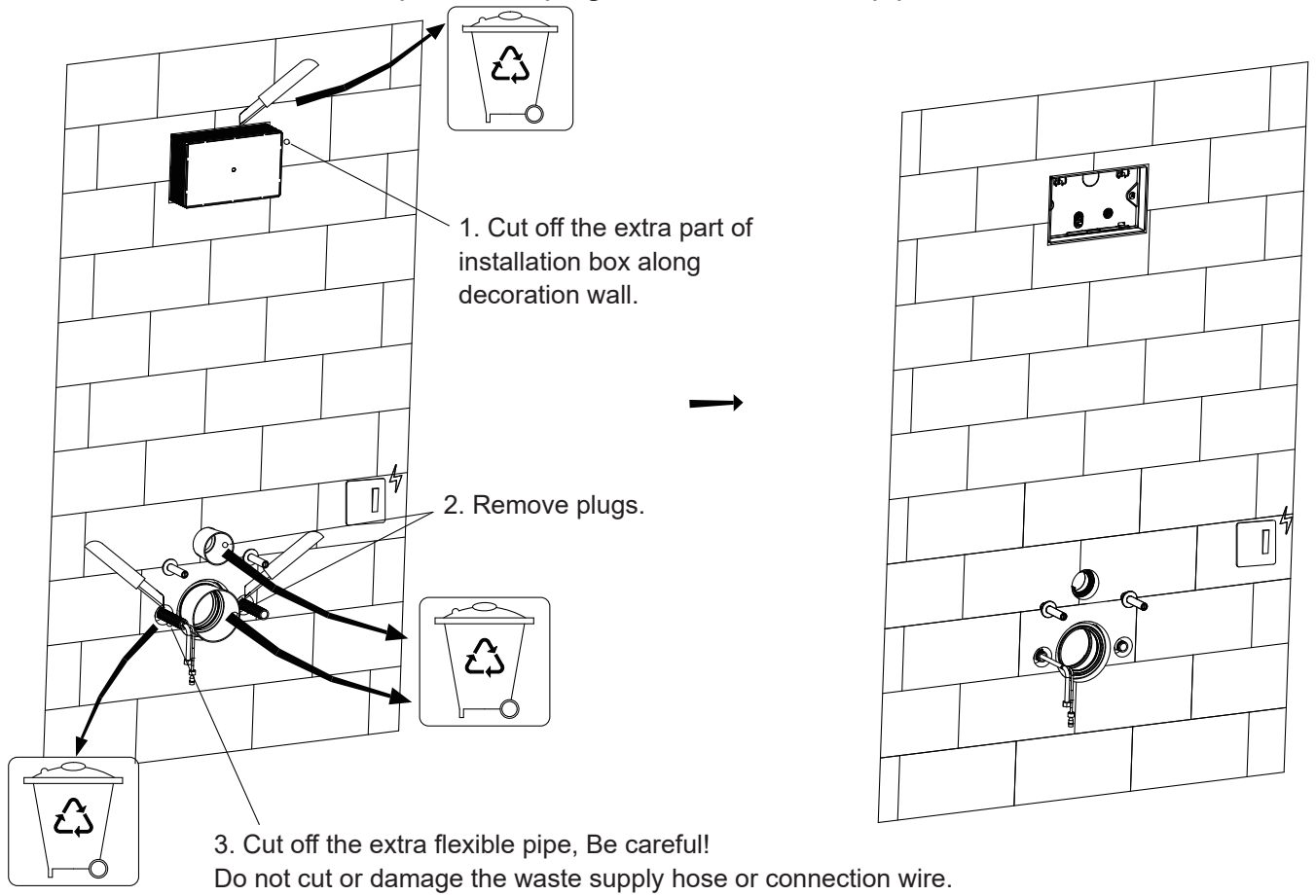
5 Installation of flexible pipe



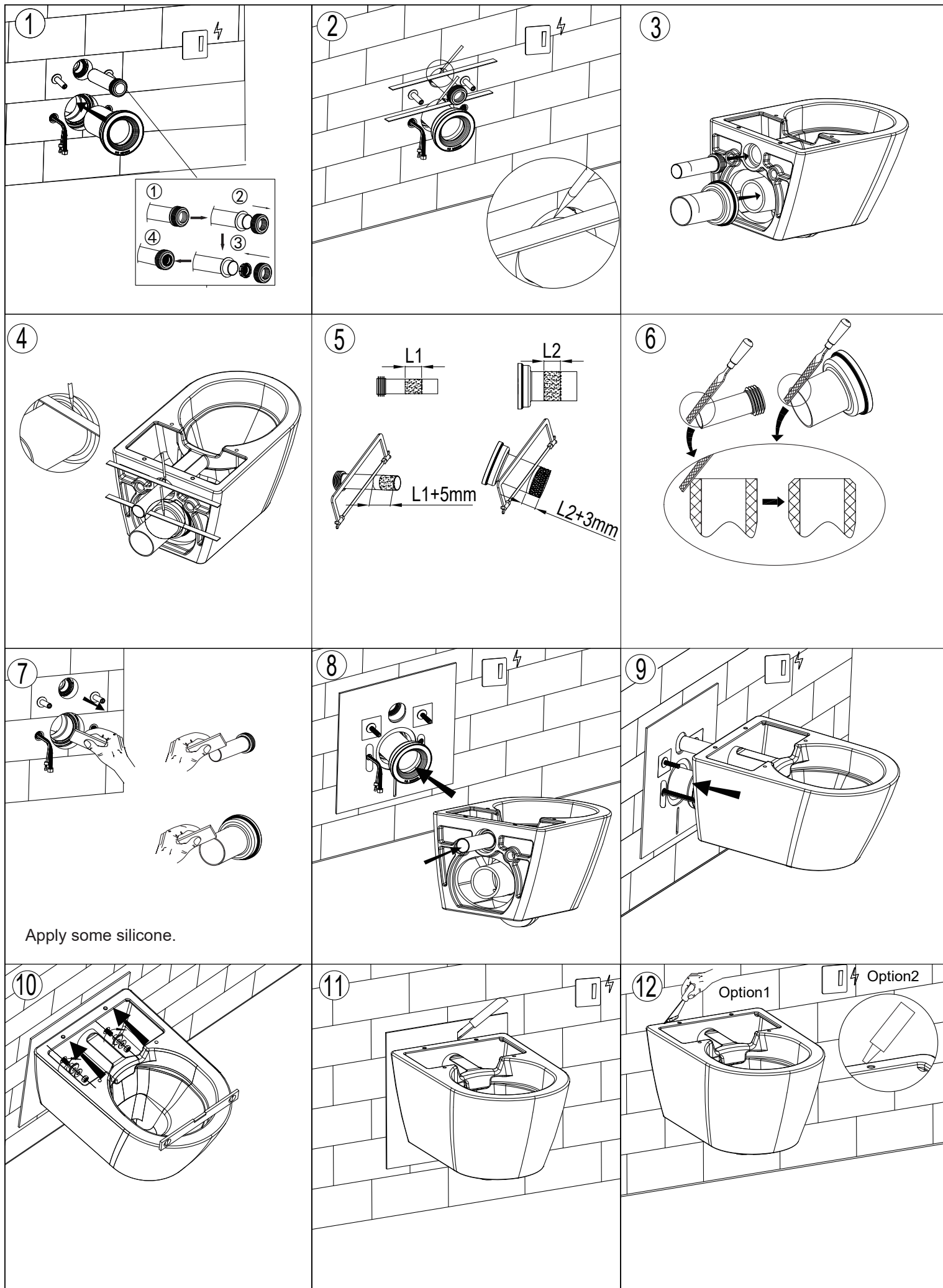
6 Finish wall (wall thickness 3/4" – 2 3/8" (20mm -60mm))



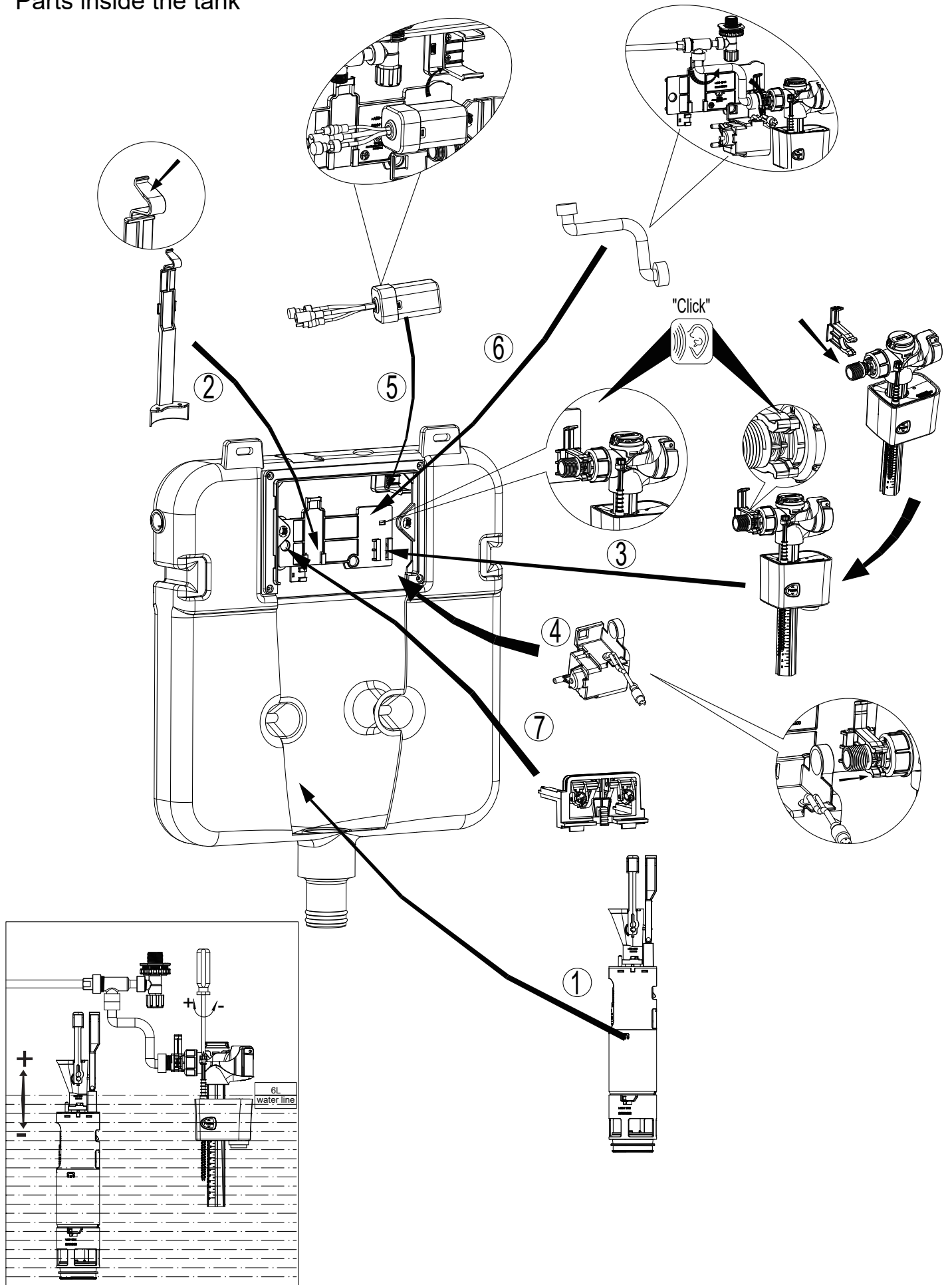
7 Remove installation box cover, protection plugs and extra flexible pipe.



10 Mounting of wall hung toilet.



Parts inside the tank



ASGFAF0145008A-1.1

Issued: 11092023