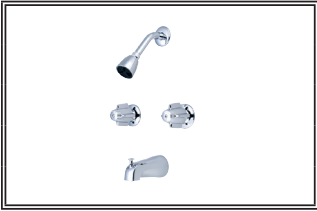


Central Brass COMPANY

SPECIFICATION SHEET

Date: _____

TWO HANDLE TUB & SHOWER SET



Model #: _____
Specific Features: _____
Project Name: _____
Submitted For: _____
Date: _____

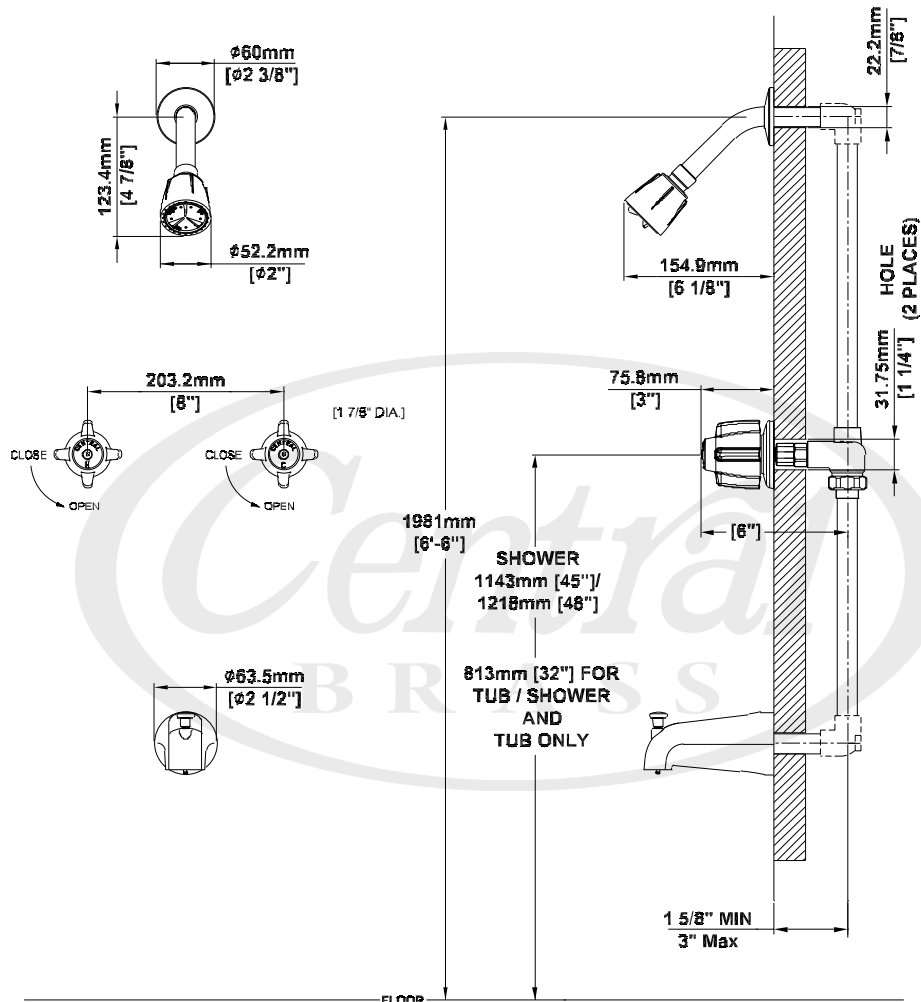
- Two Handle Tub & Shower Set
- Canopy Handles
- Shower Head, Arm & Flange
- 1/2" IP Union Inlets
- Ceramic Disc Cartridges
- 8" Centers
- Built-in Transfer Valve
- 1/2" IPS & Slip-on Combo Diverter Tub Spout

80997 SHOWN

Model #	Features	Finish	
80997	Tub & Shower Set	PVD PC	
80905	Valve Set	PVD PC	
80908-Z	Tub Set W/ Combo Tub Spout	PVD PC	
80926	Shower Set	PVD PC	

Central Brass products are engineered and manufactured to meet the following standards and codes:

ASME A112.18.1
ANSI A117.1



Brecksville, OH
www.centralbrass.com
Central Brass Company © 2012