

Central Brass Company, Inc.
3325 S. Garfield Ave.
Commerce, CA 90040
(800) 321-8630
www.centralbrass.com

Tools:



Adjustable Wrench



Flat Head Screwdriver



Teflon Tape



Rags



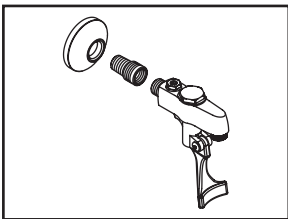
Model Number: 0396, 0397

Warnings and Notes:

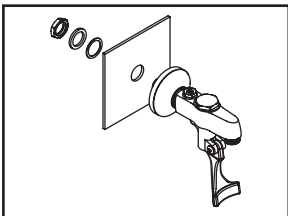
Check with local plumbing code requirements before installation.
This product should be installed by a local listed plumber.
Do not use plumbers putty on threads.

Installation Steps:

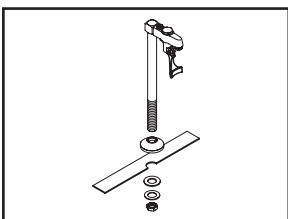
Glass Fillers



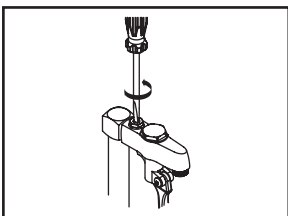
(1-a) For 0396, Turn off water supply and drain the supply line. Apply Teflon tape on the inlet shank of filler body, thread and tightened adaptor to the inlet shank. Hand tighten the flange till against the filler body.



(1-b) While holding the filler body, insert the adapter into mounting hole, slide rubber washer, metal washer and thread locknut onto thread end of the adapter, secure the filler body by tightening the locknut. Connect water supply line onto adapter, turn on water supply and check for leaks.



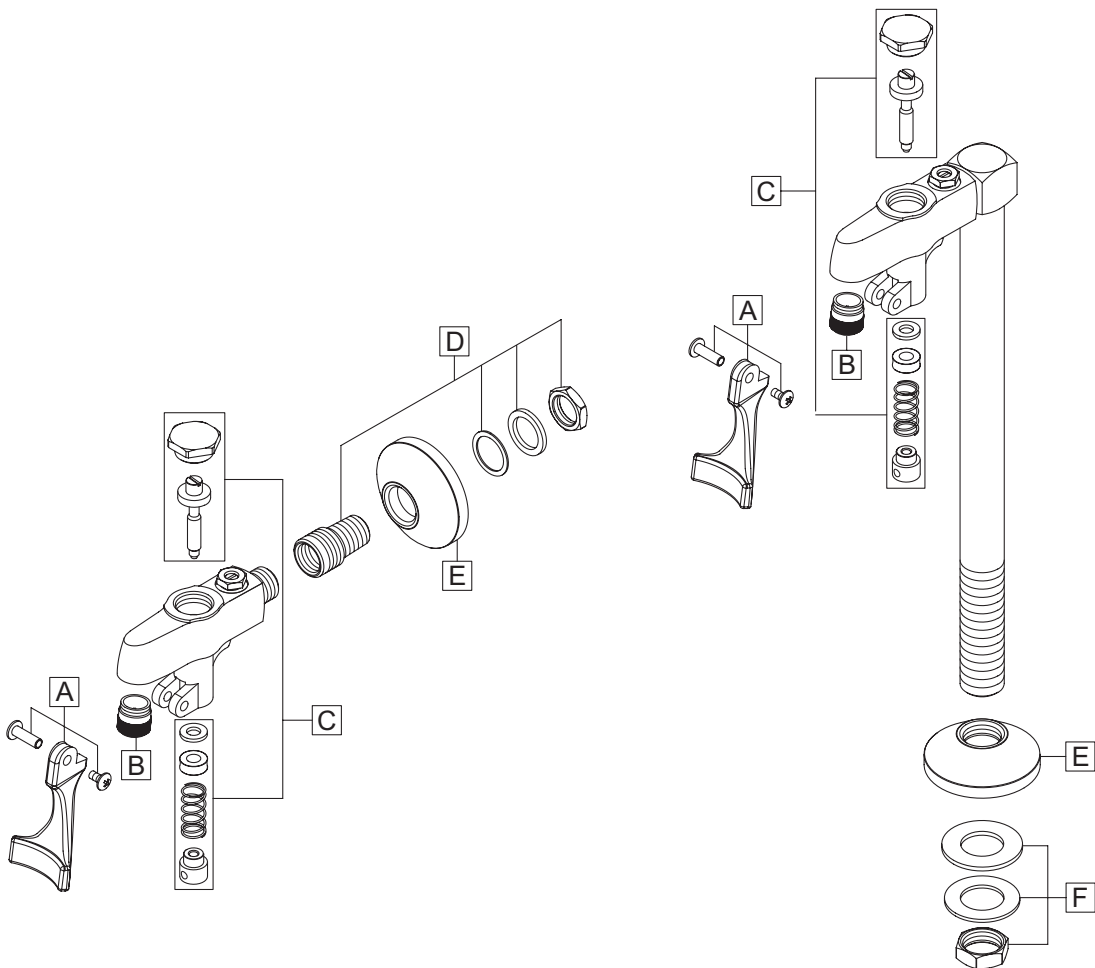
(2) For 0397, Turn off water supply and drain the supply line. Apply Teflon tape on the inlet shank of filler body, while holding the filler body, insert the inlet shank into mounting hole, slide rubber washer, metal washer and thread locknut onto inlet shank, secure the filler body by tightening the locknut. Connect water supply line onto inlet shank, turn on water supply and check for leaks.



(3) Flow adjustment Use a screwdriver to turn flow adjustment screw on top of the filler body in either direction to adjust the water flow.

Exploded Drawing :

| | ITEM # | DESCRIPTION |
|---|----------|---------------------|
| A | CS-18001 | Push Back Arm |
| B | CS-28001 | Flow Streamer |
| C | CS-38001 | Actuator Repair Kit |
| D | CS-58001 | Wall Mounting Kit |
| E | CS-68001 | Flange |
| F | CS-58002 | Deck Mounting Kit |



Central Brass
C O M P A N Y, Inc.

For more care information or trouble shooting inquiries
about your Central Brass product, please call:

Central Brass Company, Inc. (800) 321-8630
Monday-Friday 8 AM to 8 PM EST (5 AM to 5 PM PST)

www.centralbrass.com