

**Central Brass Company, Inc.**  
3325 S. Garfield Ave.  
Commerce, CA 90040  
(800) 321-8630  
www.centralbrass.com

# INSTALLATION

**Tools:**



Adjustable Wrench



Plumbers Putty



Teflon Tape



Rags



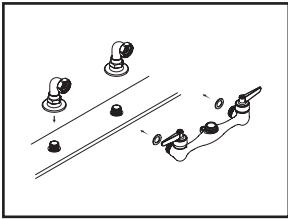
## Model Number: 0045, 0046 Series

**Warnings and Notes:**

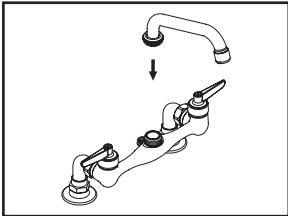
Check with local plumbing code requirements before installation.  
This product should be installed by a local listed plumber.  
**Do not use plumbers putty on threads.**

## Installation Steps:

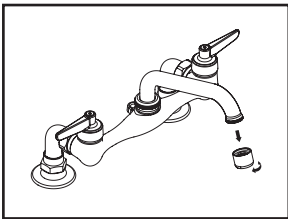
### Ledge Kitchen Faucet



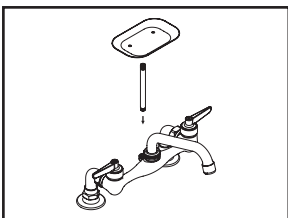
(1) Shut off main water supply. Confirm the distance between the centers of inlet pipe nipples is 8".



(2) Install spout to the faucet body. Make sure the spout is installed straight to avoid damaging the O-ring.



(3) Important: After installation is complete, remove aerator. Turn on water supplies, turn on hot and cold handle to allow both hot and cold water to run at least one minute each. While water is running, check for leaks. Turn off handles and replace aerator.



(4) For 0046 Series, attach soap dish.