



California Faucets®

Cayucos™

Two Handle Lavatory Wall Faucet Trim Only

Features

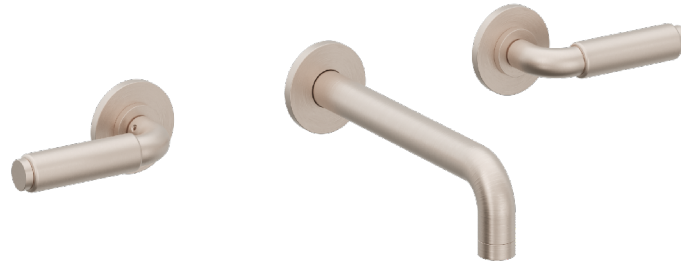
- 25+ artisan finishes including 10+ PVD finishes
- All brass construction
- 1.2gpm (4.5 L/min) max flow rate
- Rough valve (VL-R) sold separately

TO-V4102-7
TO-V4102-7-XX
TO-V4102-9
TO-V4102-9-XX

Codes/Standards Applicable

Product meets or exceeds the following:

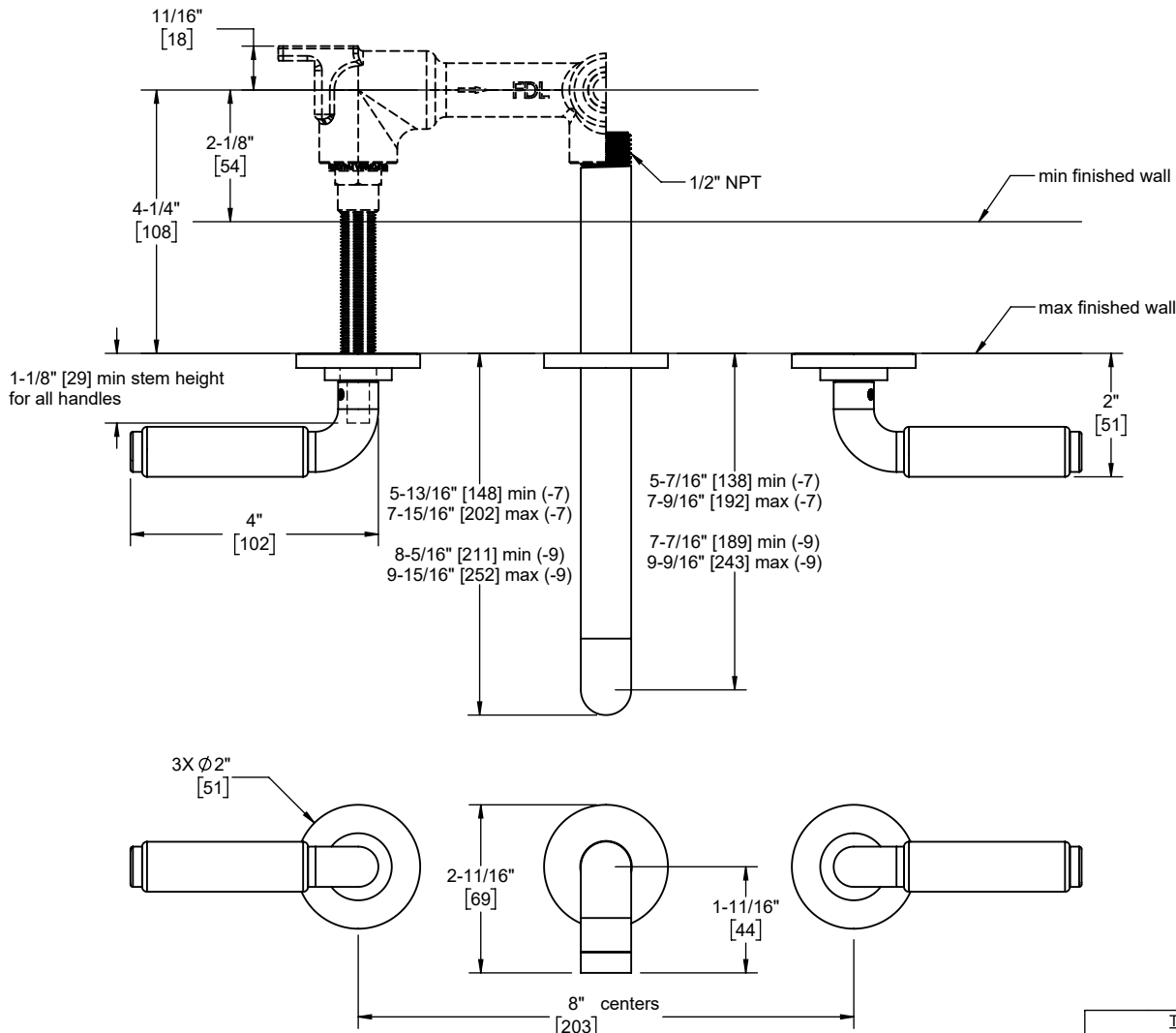
- ASME A112.18.1/CSA B125.1
- NSF 61, NSF 372, CEC & DOE
- EPA WaterSense
- Commonwealth of MA
- ADA compliant



TO-V4102-7 shown



XX = Denotes handle insert style



-XX	INSERT STYLE
ADC	Black Powdercoat
RD	Red Powdercoat
WP	White Porcelain
PP	Pink Porcelain
OP	Orange Porcelain
YP	Yellow Porcelain
BP	Blue Porcelain

Through-Hole Specifications		
Min	Recommended	Max
Spout: Ø15/16" [24]	Ø1-1/4" [32]	Ø1-5/8" [41]
Handle: Ø11/16" [17]	Ø1-1/4" [32]	Ø1-5/8" [41]

Specifications subject to change without notice

Dimensions are inches, rounded to 1/16"
[Dimensions in brackets are mm, rounded to 1mm]