



California Faucets®

San Elijo™

Two Handle Lavatory Wall Faucet Trim Only

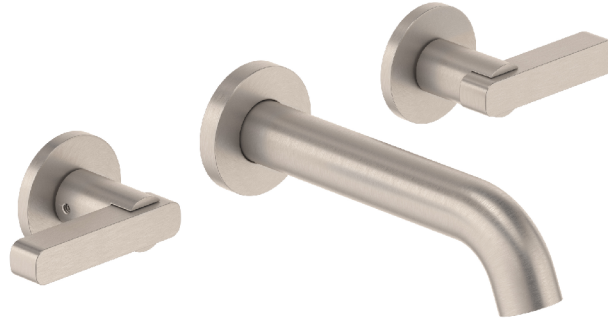
Features

- 25+ artisan finishes including 12 PVD finishes
- All brass construction
- 1.2gpm (4.5 L/min) max flow rate
- Rough valve (VL-R) sold separately

Codes/Standards Applicable

Product meets or exceeds the following:

- ASME A112.18.1/CSA B125.1
- NSF 61, NSF 372, CEC & DOE
- EPA WaterSense
- Commonwealth of MA
- ADA compliant (lever handles only)



TO-V3802-7-SN shown

TO-V3802-7
 TO-V3802T-7
 TO-V3802X-7
 TO-V3802XT-7
 TO-V3802-9
 TO-V3802T-9
 TO-V3802X-9
 TO-V3802XT-9



Through-Hole Specifications			
	Min	Recommended	Max
Spout:	Ø15/16" [24]	Ø1-1/4" [32]	Ø1-5/8" [41]
Handle:	Ø11/16" [17]	Ø1-1/4" [32]	Ø1-5/8" [41]

