



California Faucets®

COTO™

Stationary Kitchen Faucet - High Arc Spout

Features

- 7 artisan finishes including 4 PVD finishes
- 316 stainless steel construction
- Excellent corrosion resistance, for indoor or outdoor use
- 360° rotating spout
- Ceramic disc cartridge
- Max flow rate: 1.8 gpm (6.8 L/min)

K90-130-PT
K90-130-BQ
K90-130-KA
K90-130-KD



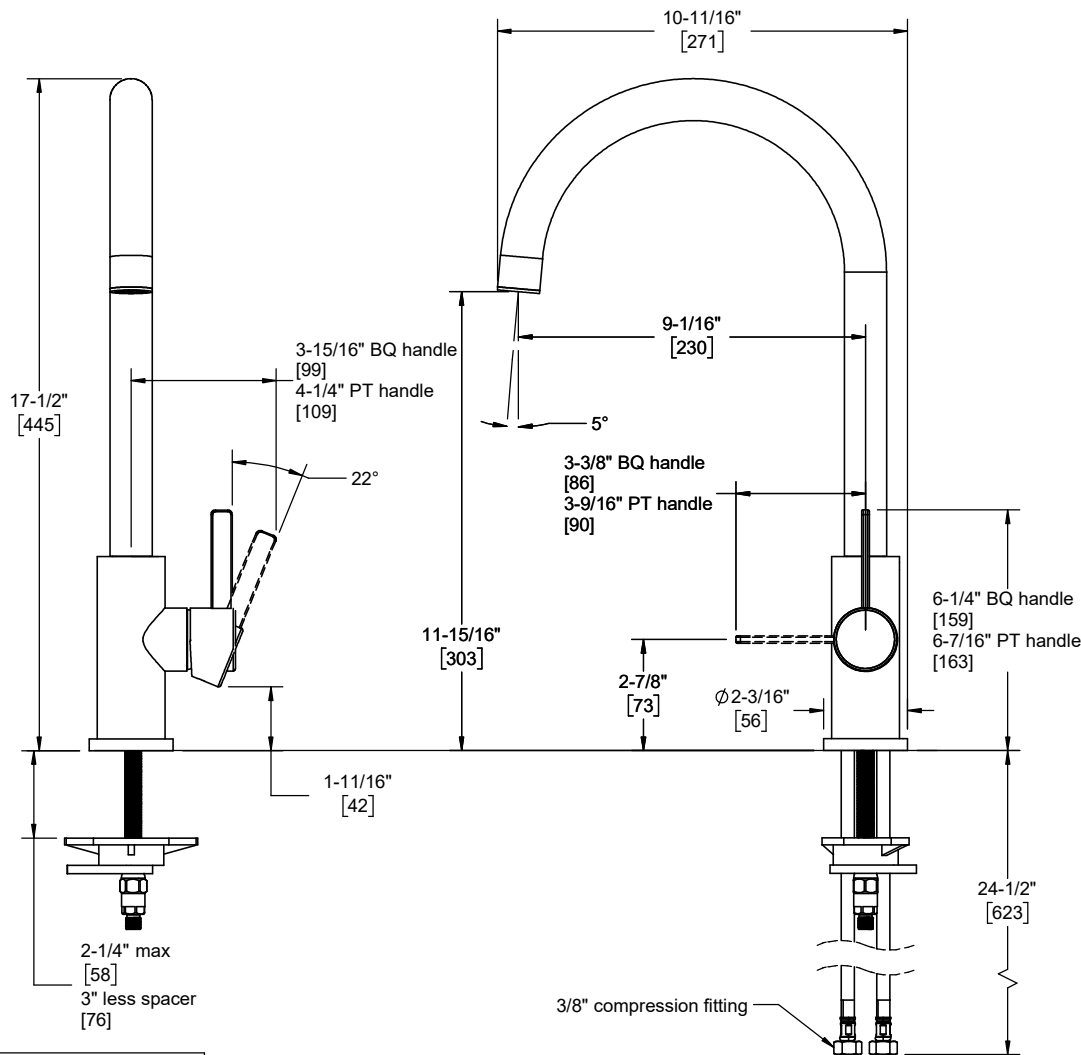
K90-130-BQ shown



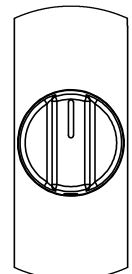
Codes/Standards Applicable

Product meets or exceeds the following:

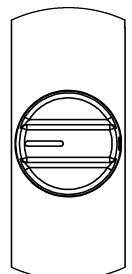
- ASME A112.18.1/CSA B125.1
- NSF 61, NSF 372, CEC, & DOE
- Commonwealth of MA
- ADA compliant



KNOB HANDLES

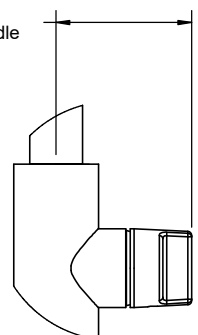


OFF POSITION



MAX HOT POSITION

2-13/16" KA handle
[72]
2-7/8" KD handle
[73]



Through-Hole Specifications

Min	Recommended	Max
Ø 1-1/4" [32]	Ø 1-3/8" [35]	Ø 1-3/8" [38]

Specifications subject to change without notice

Dimensions are inches, rounded to 1/16"
[Dimensions in brackets are mm, rounded to 1mm]