



California Faucets®

**Descanso®**

Culinary Kitchen Faucet

**Features**

- 25+ artisan finishes including 12 PVD finishes
- Brass construction with closed coil stainless steel spring
- 360° rotating arm with magnetic sprayhead docking
- One button control for aerated or spray stream
- Spray jets have easy-to-clean surface
- Ceramic disc cartridge
- Max flow rate: 1.8 gpm (6.8 L/min)



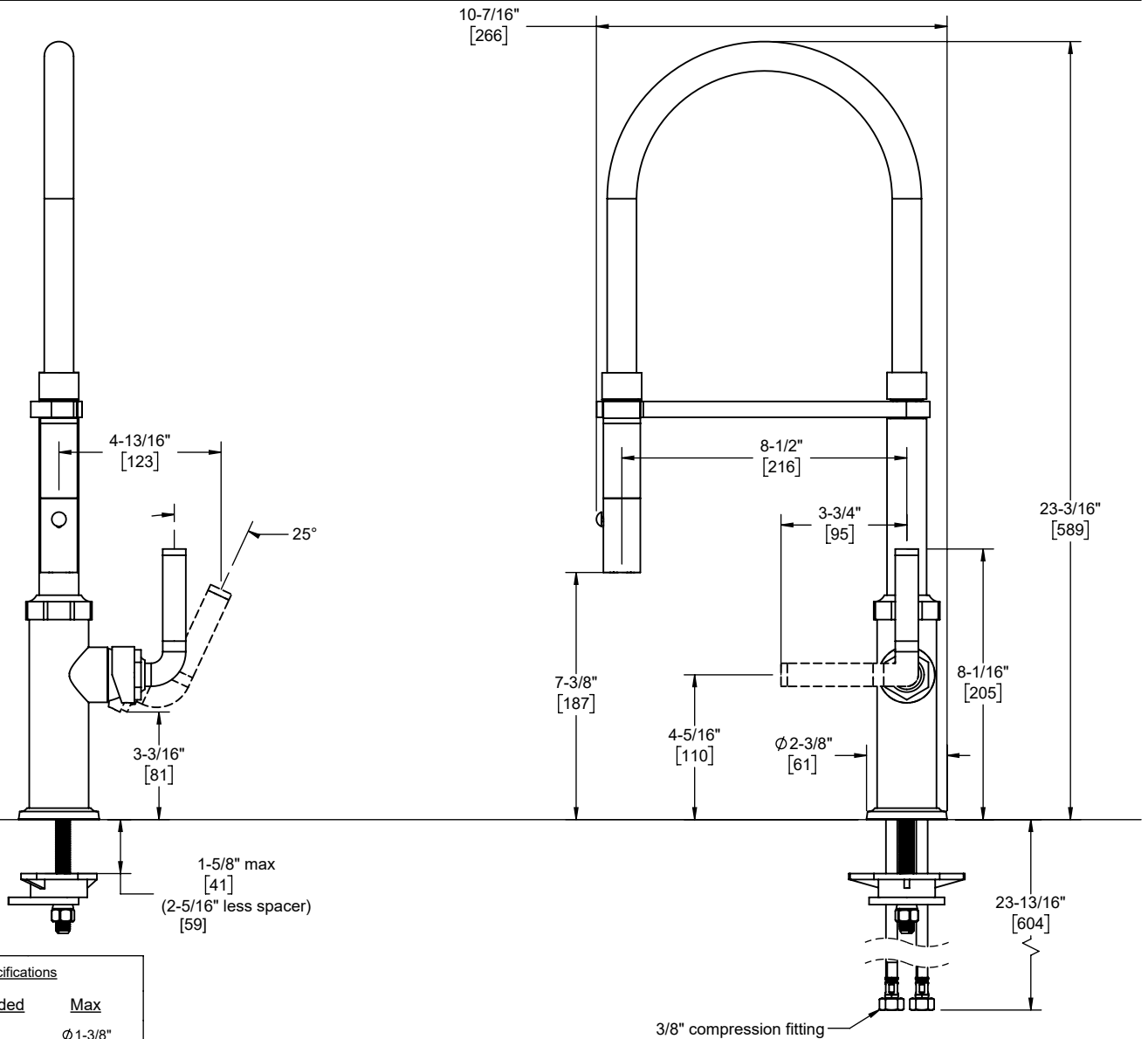
K30-150-FL-ZZ shown

- K30-150-FL
- K30-150-KL
- K30-150-SL
- K30-150-TL
- K30-150F-FL
- K30-150F-KL
- K30-150F-SL
- K30-150F-TL

**Codes/Standards Applicable**

Product meets or exceeds the following:

- ASME A112.18.1/CSA B125.1
- NSF 61, NSF 372, CEC, & DOE
- Commonwealth of MA
- ADA compliant



| Through-Hole Specifications |               |               |
|-----------------------------|---------------|---------------|
| Min                         | Recommended   | Max           |
| Ø 1-1/4" [32]               | Ø 1-3/8" [35] | Ø 1-3/8" [38] |

Specifications subject to change without notice

Dimensions are inches, rounded to 1/16"  
[Dimensions in brackets are mm, rounded to 1mm]