

California Faucets®

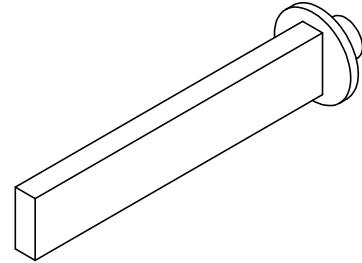
BEL CANTO™

DELUXE WALL TUB SPOUT

D-E3-E3

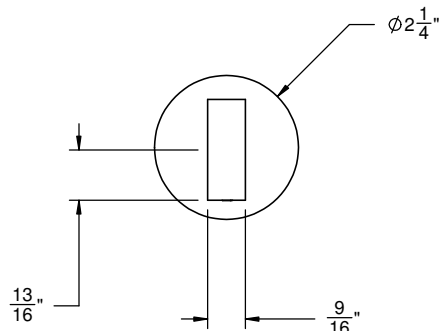
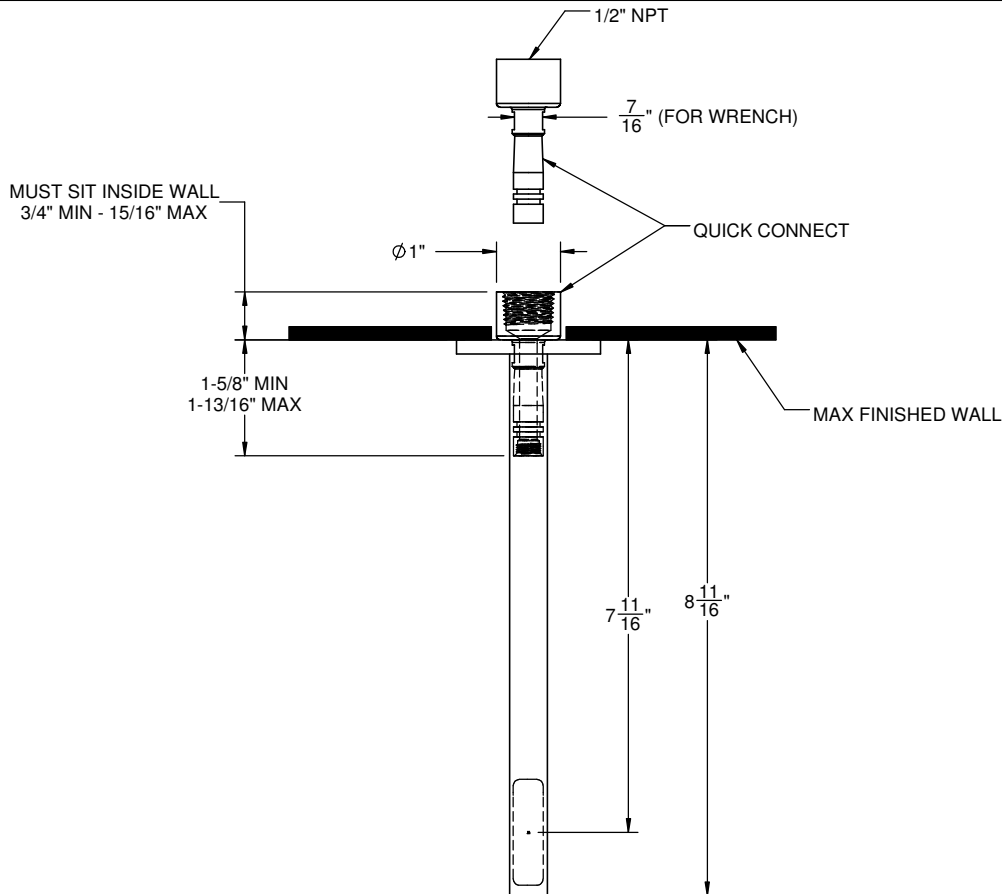
Features

- 7-11/16" spout wall to center
- Max flow rate: 10.0 gpm (37.8 L/min)
- Quick connect
- For use with StyleTherm, 3-VR or 2-VR valves
- Solid brass construction
- Over 30 finishes including 15 PVD finishes



Codes/Standards Applicable

- Meets or exceeds the following at date of manufacture:
- ASME A112.18.1/CSA B125.1



THROUGH-HOLE SPECIFICATIONS		
MIN	RECOMENDED	MAX
SPOUT: Ø 1-1/4"	Ø 1-1/4"	Ø 1-5/8"