

California Faucets®

Descanso®

INDUSTRIAL CULINARY KITCHEN FAUCET

Features

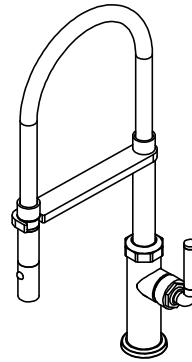
- Over 28 finishes including 13 PVD finishes
- All brass construction
- 360° rotating arm with slide-in opening to secure sprayhead
- Flexible closed coil stainless steel spring
- Magnetic docking secures sprayhead into arm
- One button brass spray head has dual function aerated or spray mode
- Spray jets have easy-to-clean surface that withstands mineral build-up
- Ceramic disc cartridge
- Max flow rate: 1.8 gpm (6.8 L/m)

Codes/Standards Applicable

Meets or exceeds the following at date of manufacture:

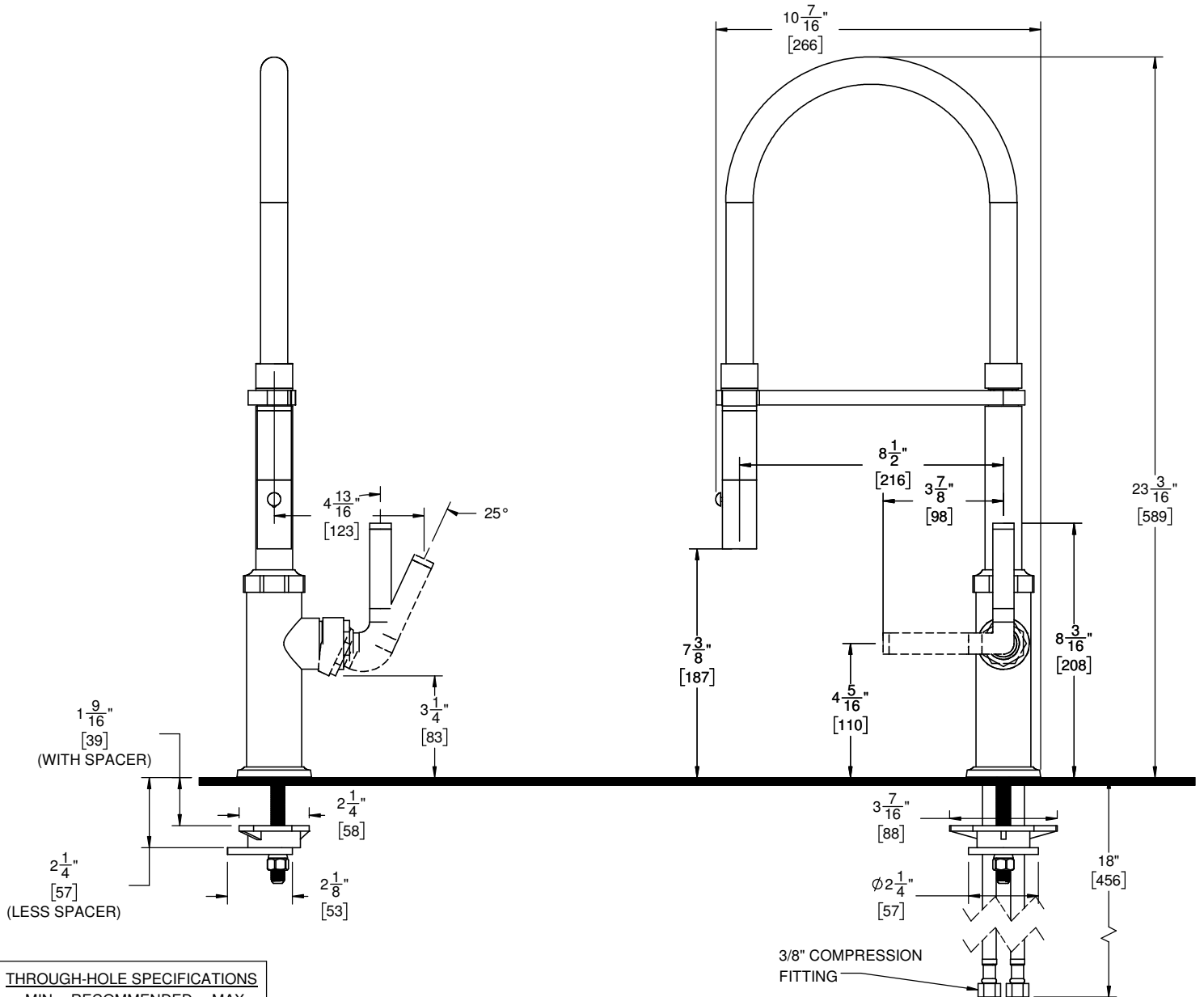
- ASME A112.18.1/CSA B125.1
- NSF 61 and NSF 372
- CEC / DOE
- Commonwealth of MA
- ADA Compliant

CF-K30-150-XX
CF-K30-150F-XX



CF-K30-150-FL-ZZ SHOWN

XX = DENOTES
HANDLE STYLE



THROUGH-HOLE SPECIFICATIONS		
MIN	RECOMMENDED	MAX
φ 1-1/4"	φ 1-3/8"	φ 1-3/8"

SPECIFICATIONS SUBJECT TO CHANGE WITHOUT NOTICE

ALL DIMENSIONS SHOWN TO NEAREST 1/16"
[ALL DIMENSIONS SHOWN TO NEAREST 1MM]