



California Faucets®

KITCHEN

CONTEMPORARY HOT ONLY WATER DISPENSER

Features

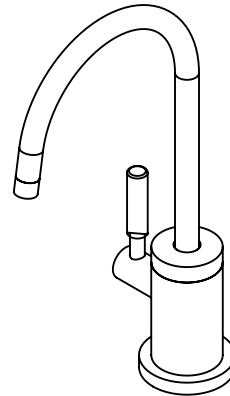
- All brass construction
- 360° rotating spout
- Insulated body and spout to reduce heat transfer to faucet
- Self-closing handle
- Max flow rate 1.8 gpm (6.8 L /min); varies with hot water tank used
- Over 30 finishes including 15 PVD finishes
- Requires Hot Water Tank (9628SS) sold separately

Codes/Standards Applicable

Product meets or exceeds the following:

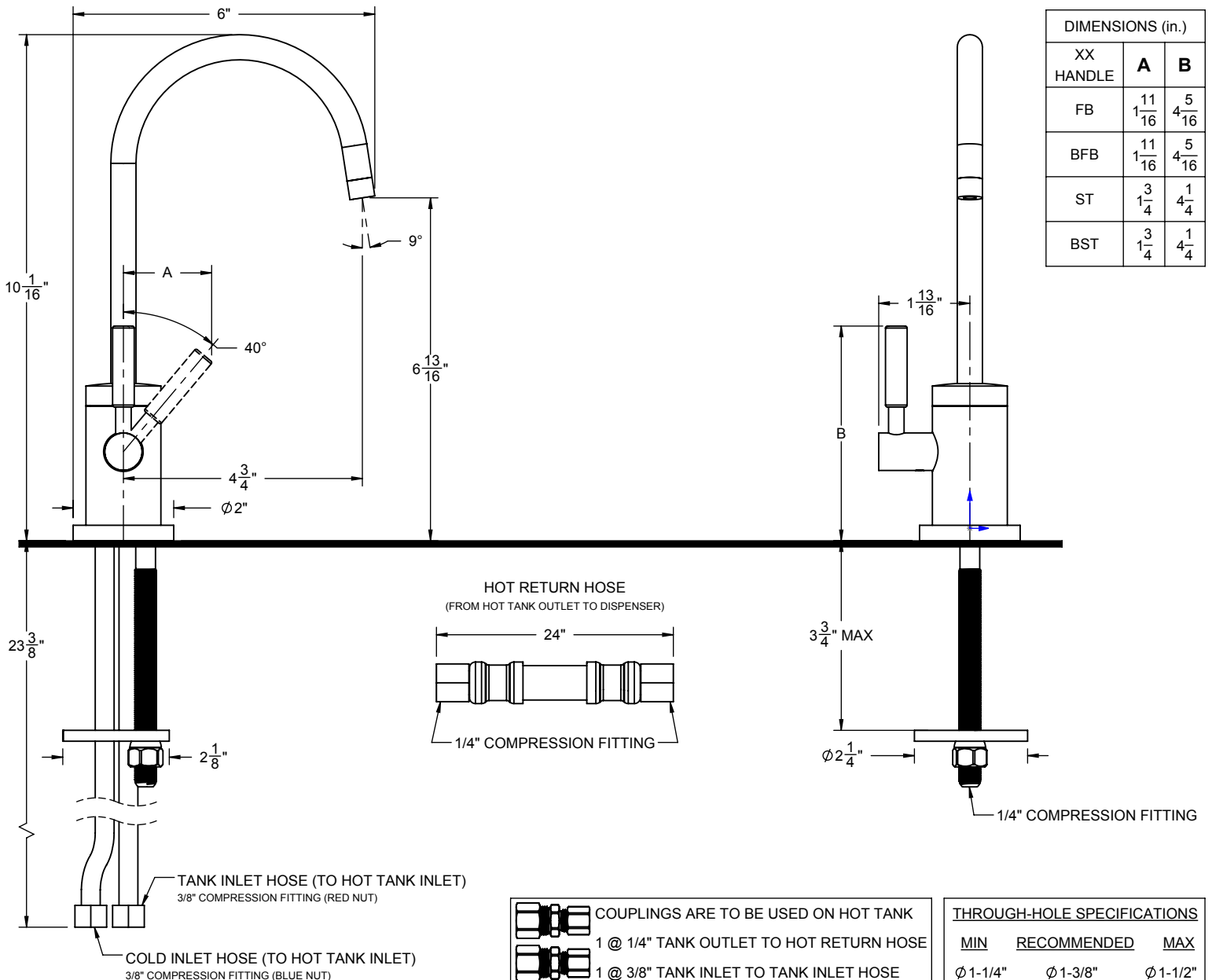
- ASME A112.18.1/CSA B125.1
- NSF 61 and NSF 372
- CEC/DOE
- Commonwealth of MA
- ADA compliant

CF-9625-K51-BFB
CF-9625-K51-BFT
CF-9625-K51-FB
CF-9625-K51-ST



CF-9625-K51-ST shown

XX = DENOTES HANDLE SHOWN



SPECIFICATIONS SUBJECT TO CHANGE WITHOUT NOTICE

ALL DIMENSIONS SHOWN TO NEAREST 1/16"