



5907

Features

- Over 28 finishes including 13 PVD finishes
- All brass construction
- 1/4 turn ceramic disc cartridge(s)
- Flexible connections for easy installation
- 4" spout reach
- 1.2 gpm (4.5 L/min) max flow rate
- ϕ 1-1/4" all brass lift rod style pop up drain assembly

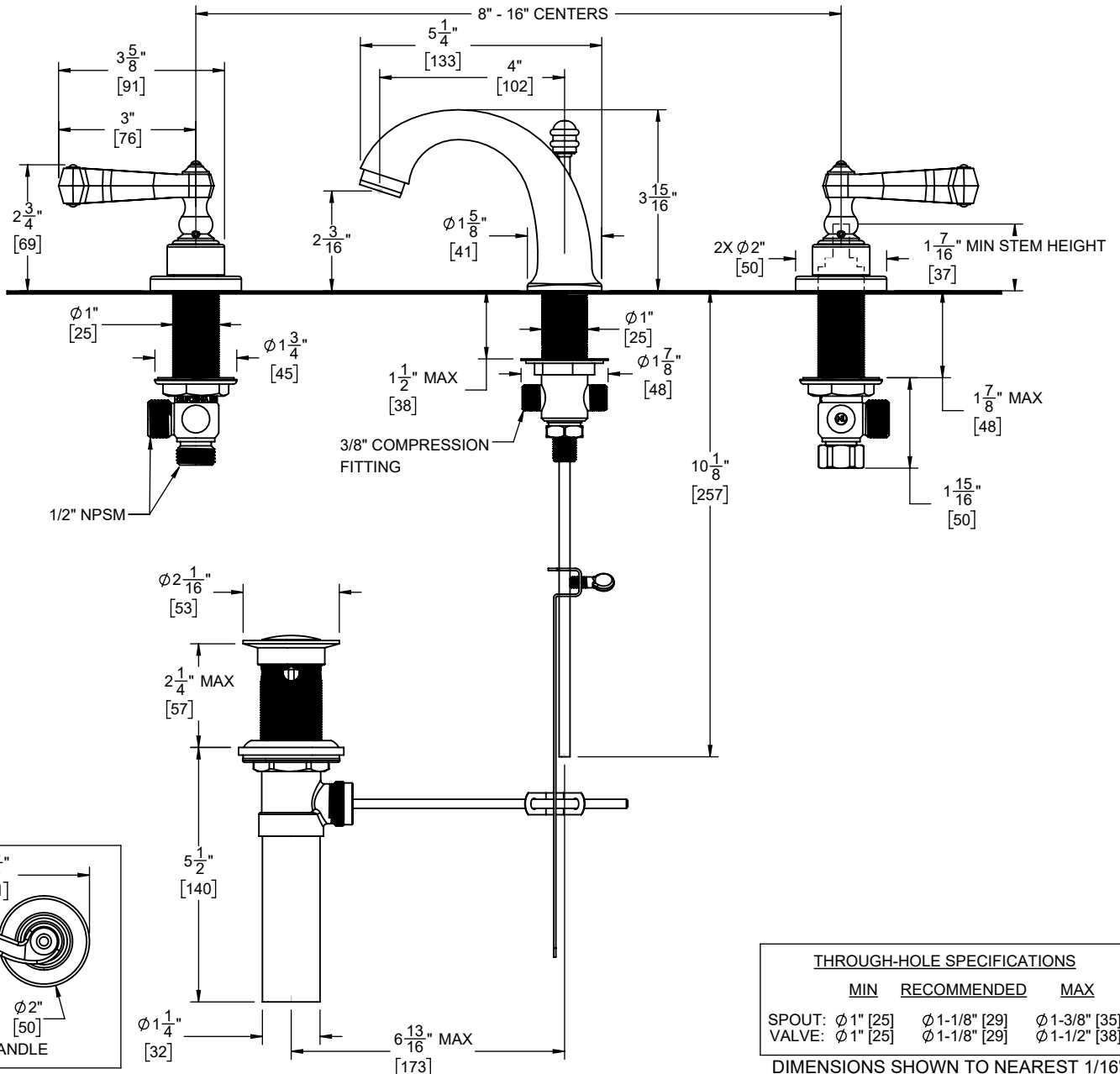
Codes/Standards

Product meets or exceeds the following:

- ASME A112.18.1/CSA B125.1
- NSF/ANSI 61 & NSF/ANSI 372
- CEC & DOE
- Commonwealth of MA
- EPA WaterSense High Efficiency Lavatory
- ADA compliant



5907 shown



SPECIFICATIONS SUBJECT TO CHANGE WITHOUT NOTICE