



California Faucets®

Descanso Works®

Hot Only Water Dispenser

Features

- Available in 27 finishes including 12 PVD finishes
- All brass construction
- Insulated spout to reduce heat to faucet
- Max flow rate: 1.0 gpm (3.8 L/min)
- **Not** compatible with RO filter units
- Requires Hot Water Tank (9628SS) sold separately

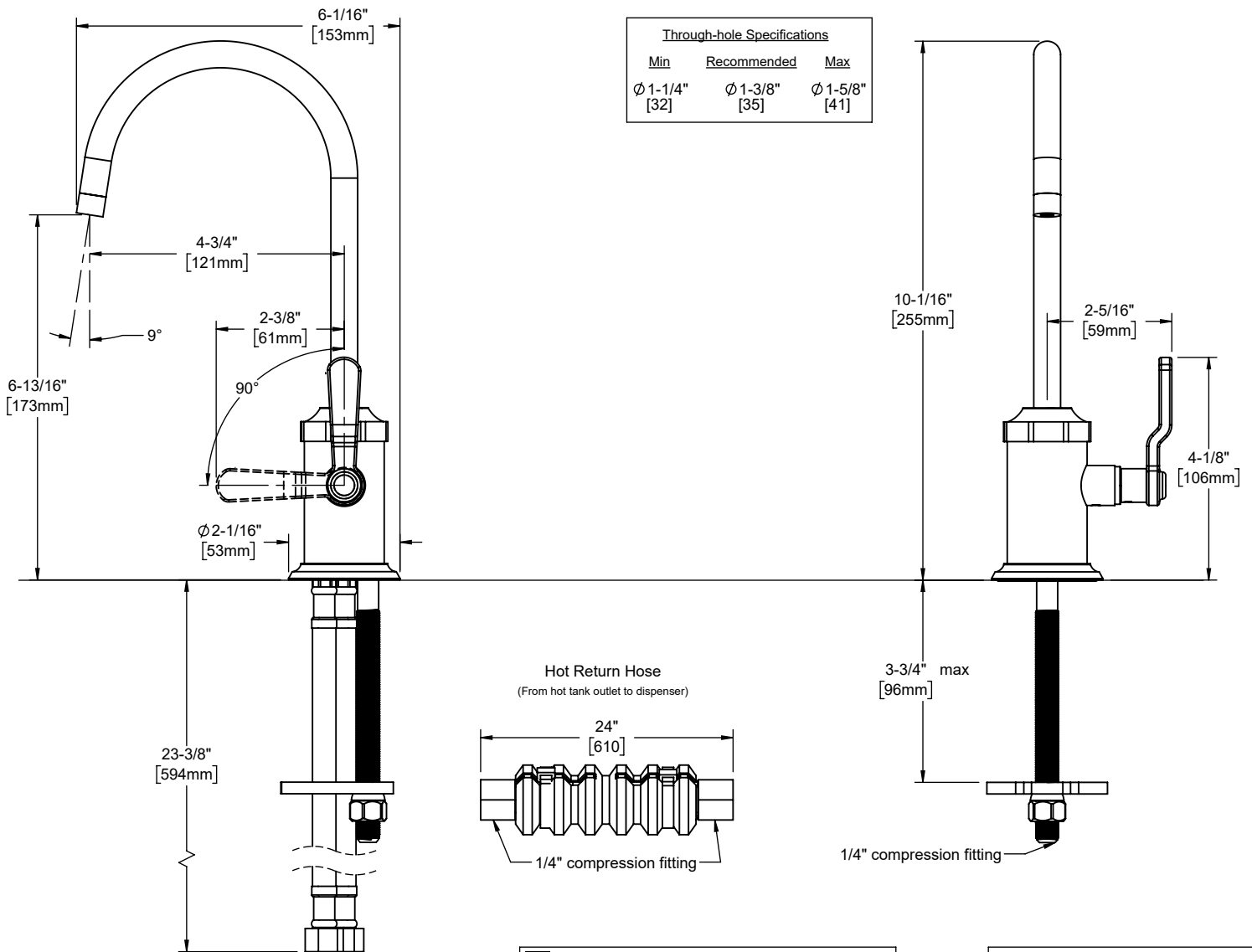
9625-K81-BL



Codes/Standards Applicable

Product meets or exceeds the following:

- ASME A112.18.1/CSA B125.1
- NSF 61, NSF 372, CEC, & DOE
- Commonwealth of MA
- ADA compliant



Couplings are to be used on hot tank
 1 @ 1/4" Tank outlet to hot return hose
 1 @ 3/8" Tank inlet to tank inlet hose

Supply line flow restrictor
 for 3/8" compression fitting
 9/16"-24 male x female

Specifications subject to change without notice

Dimensions are inches, rounded to 1/16"
 [Dimensions in brackets are mm, rounded to 1mm]