



California Faucets®

**Tiburon™**

Robe Hook

**Features**

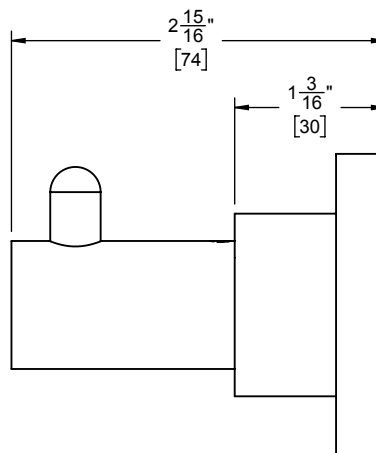
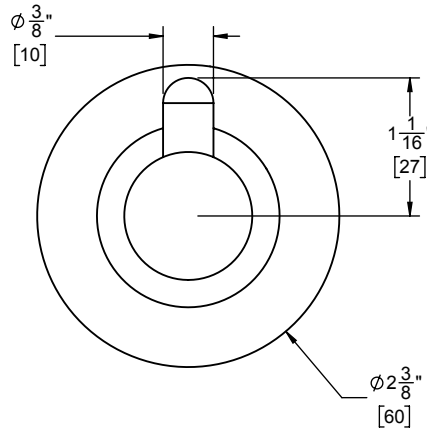
- Available in 28 finishes including 13 PVD finishes
- All brass construction
- Adjustable wall mount to allow proper vertical alignment
- Includes all mounting hardware

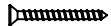
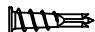
**65-RH**



**Codes/Standards**

- None applicable



	(2X) 8 X 1-1/2" [38] Phillips Head Screw
	(2X) 1 x 3/8" [10] Anchor

Dimensions are inches, rounded to 1/16"  
[Dimensions in brackets are mm, rounded to 1mm]