



California Faucets®

Cayucos™

Roman Tub Set

Features

- 25+ artisan finishes including 10+ PVD finishes
- All brass construction
- 16gpm (60.6 L/min) max flow rate
- Comes as complete set with trim and valves

Codes/Standards Applicable

Product meets or exceeds the following:

- ASME A112.18.1/CSA B125.1
- Commonwealth of MA
- ADA compliant
- Installation of upstream tempering device may be required (verify local codes)

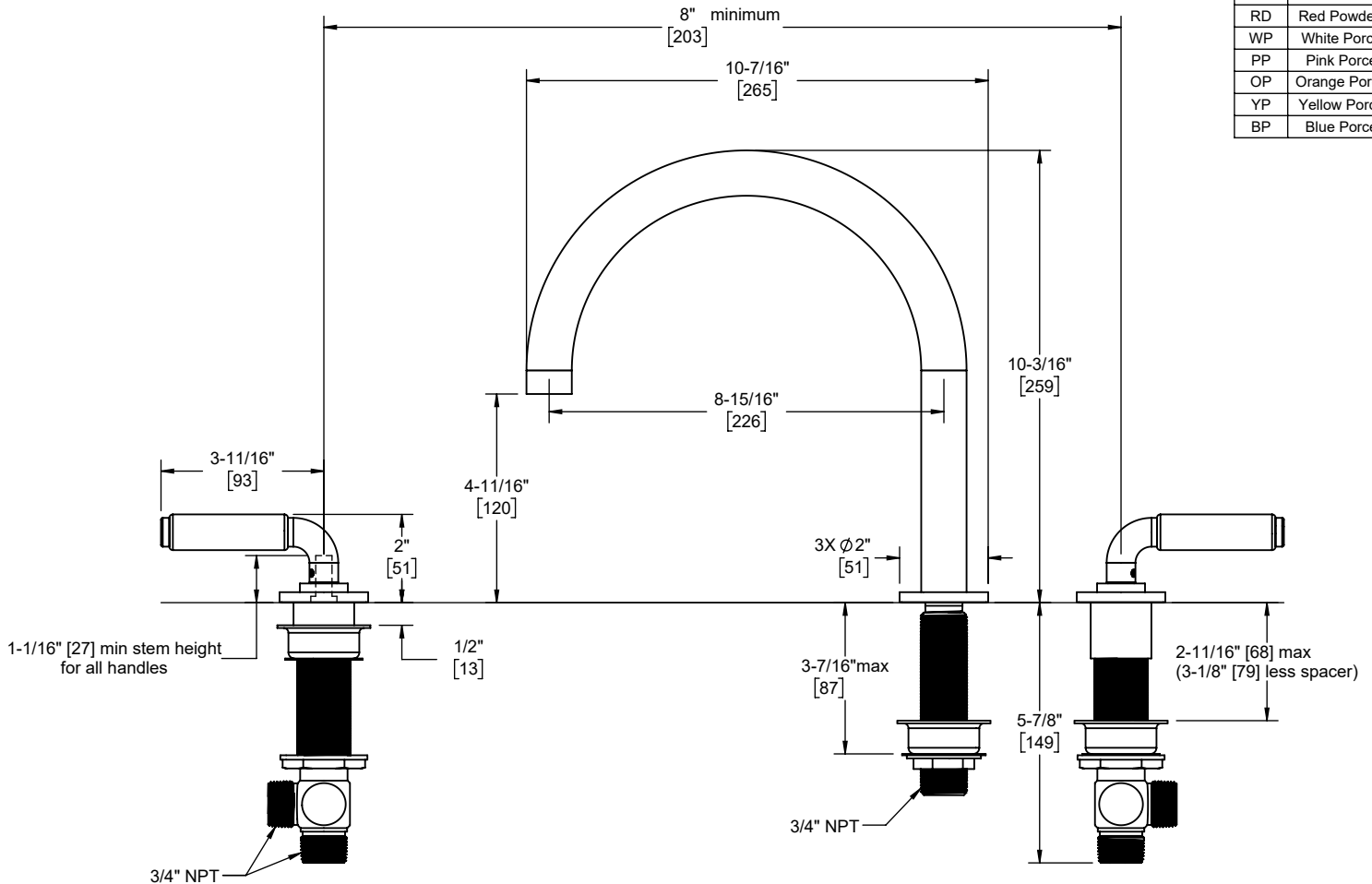


4108 shown

XX = Denotes handle insert style



-XX	INSERT STYLE
ADC	Black Powdercoat
RD	Red Powdercoat
WP	White Porcelain
PP	Pink Porcelain
OP	Orange Porcelain
YP	Yellow Porcelain
BP	Blue Porcelain



Through-Hole Specifications			
	Min	Recommended	Max
Spout: Ø1-1/16" [27]	Ø1-3/8" [35]	Ø1-1/2" [38]	
Valve: Ø1-3/8" [35]	Ø1-1/2" [38]	Ø1-1/2" [38]	

Specifications subject to change without notice

Dimensions are inches, rounded to 1/16"
[Dimensions in brackets are mm, rounded to 1mm]