



California Faucets®

Cayucos™

Single Hole Lavatory / Vessel / Bar Faucet

Features

- 25+ artisan finishes including 10+ PVD finishes
- All brass construction
- Single handle operation cartridge with ceramic disc
- Flexible braided hoses for ease of installation
- 1.2gpm (4.5 L/min) max flow rate

Codes/Standards Applicable

Product meets or exceeds the following:

- ASME A112.18.1/CSA B125.1
- NSF 61, NSF 372, CEC & DOE
- EPA WaterSense
- Commonwealth of MA
- ADA compliant

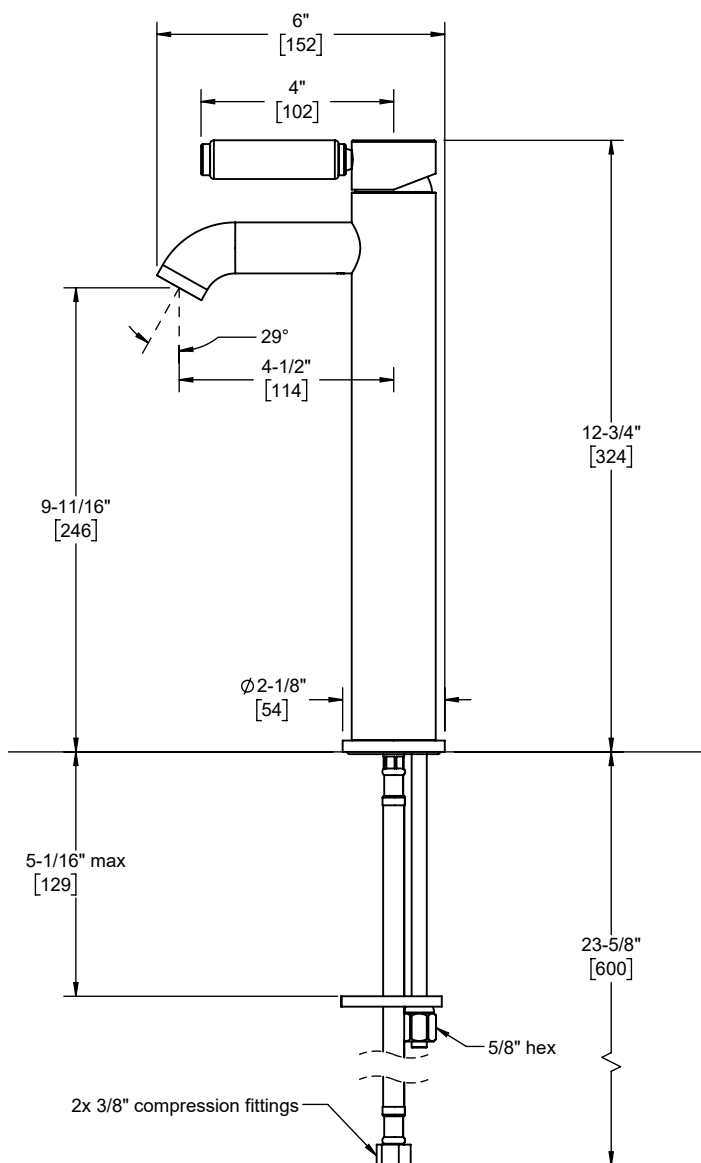


4101-2 shown

4101-2
4101-2-XX



XX = Denotes handle insert style



-XX	INSERT STYLE
ADC	Black Powdercoat
RD	Red Powdercoat
WP	White Porcelain
PP	Pink Porcelain
OP	Orange Porcelain
YP	Yellow Porcelain
BP	Blue Porcelain

Through-Hole Specifications		
	Min	Recommended
Spout:	ϕ 1-1/4" [32]	ϕ 1-3/8" [35]

Specifications subject to change without notice

Dimensions are inches, rounded to 1/16"
[Dimensions in brackets are mm, rounded to 1mm]