



California Faucets®

# San Elijo™

## Roman Tub Set

### Features

- 25+ artisan finishes including 12 PVD finishes
- All brass construction
- 16gpm (60.6 L/min) max flow rate
- Comes as complete set with trim and valves

### Codes/Standards Applicable

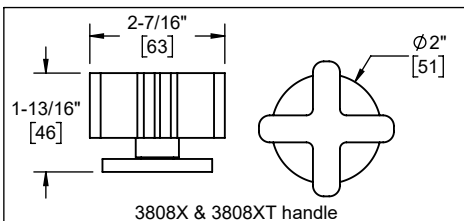
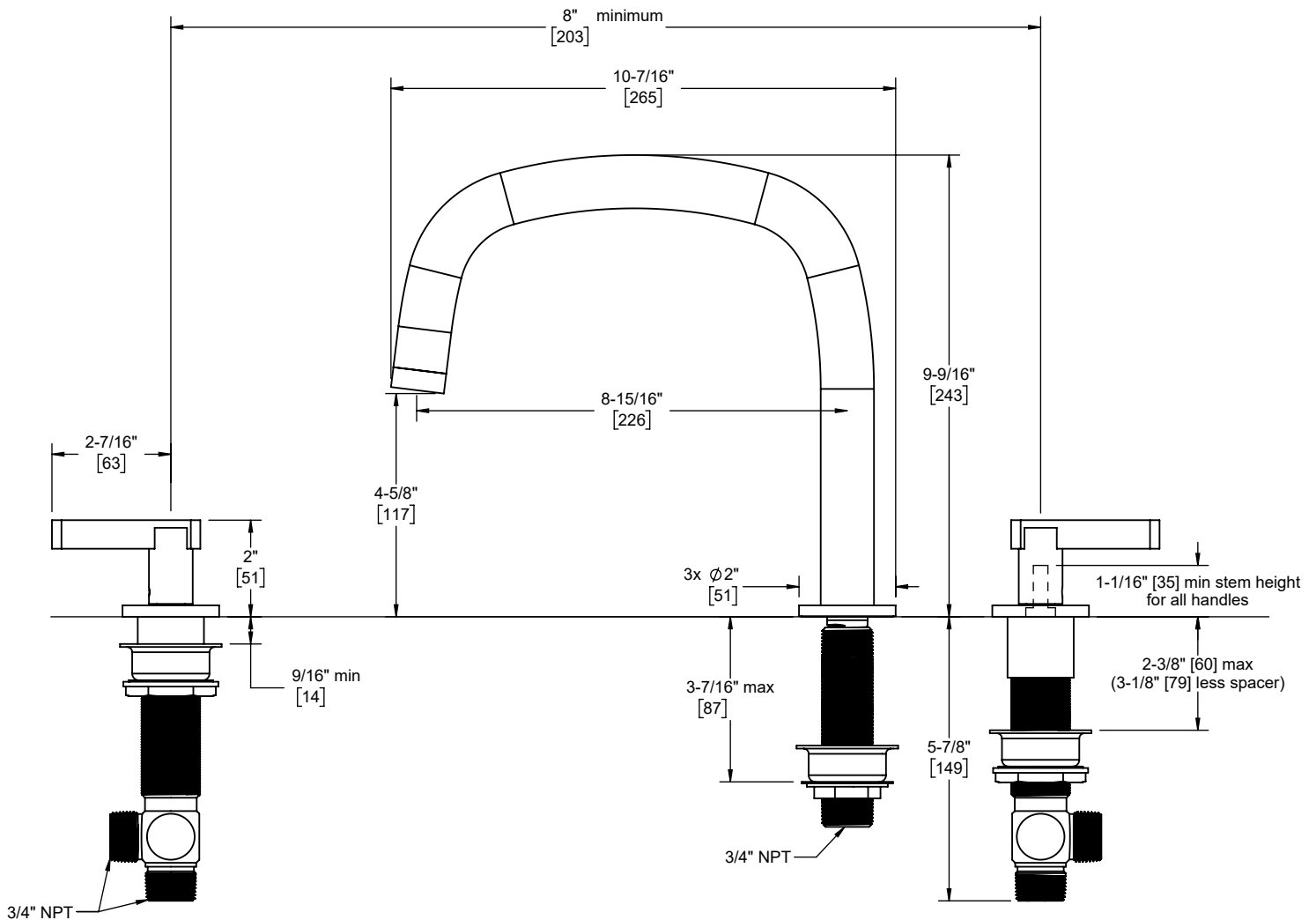
Product meets or exceeds the following:

- ASME A112.18.1/CSA B125.1
- Commonwealth of MA
- ADA compliant (lever handle only)
- Installation of upstream tempering device may be required (verify local codes)



3808-SN shown

**3808**  
**3808T**  
**3808X**  
**3808XT**



Through-Hole Specifications			
	Min	Recommended	Max
Spout:	Ø1-1/16" [27]	Ø1-3/8" [35]	Ø1-1/2" [38]
Valve:	Ø1-3/8" [35]	Ø1-3/8" [35]	Ø1-1/2" [38]

Dimensions are inches, rounded to 1/16"  
[Dimensions in brackets are mm, rounded to 1mm]

Specifications subject to change without notice