

I503-XX

Floor Mount “Telephone” Tub Filler

Installation Instructions

CALIFORNIA FAUCETS RECOMMENDS THAT ALL PLUMBING PRODUCTS BE INSTALLED BY A LICENSED PROFESSIONAL

IMPORTANT: Read all instructions prior to installation and provide copy of instructions to consumer.

Operating Specifications:

Recommended Supply Pressure: 20 to 70 psi ^{††}

Maximum Flow Rate: 13 gpm

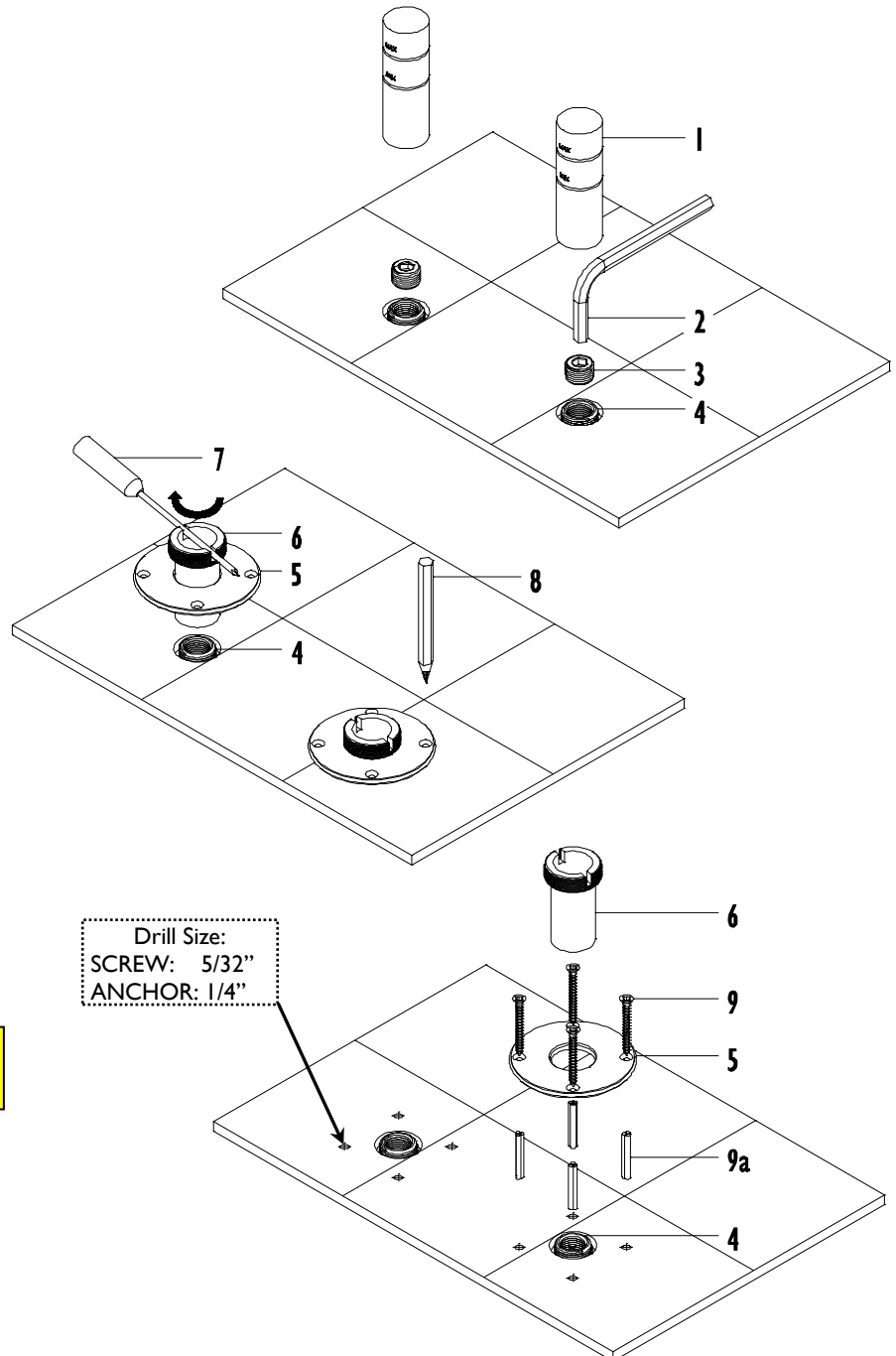
* Operating pressures between hot and cold supplies should vary no more than 30 psi.

† If water pressure exceeds 70 psi, install a Pressure-Reducing Valve (RPV).

I INSTALL FLANGES TO FLOOR

- Remove MUDGUARDS (1)
- Using 3/8" hex KEY (2) (not supplied), remove 1/2" PLUGS (3) from NIPPLES (4)
- Place FLANGE (5) onto SHANK (6) and loosely tighten onto NIPPLE (4) using SCREWDRIVER (7) in slots of SHANK (6)
- Using PENCIL (8) to mark on finished floor screw hole locations from FLANGE (5)
- Remove FLANGE (5) and SHANK (6)
- Pre-drill holes in finished floor use following drill bit:
 - SCREW (only): 5/32"
 - ANCHOR: 1/4"
- Insert ANCHOR (9a) (if required) into pre-drilled holes
- Place FLANGE (5) onto SHANK (6) and loosely tighten onto NIPPLE (4) using SCREWDRIVER (7) in slots of SHANK (6)
- Secure FLANGE (5) into place with SCREWS (9)
- Once SCREWS (9) are tightened, securely tighten SHANK (6) against FLANGE (5)

IMPORTANT: It is necessary to securely tighten the SHANK (6) against FLANGE (5) for proper support of the entire Floor Mount Tub Filler.

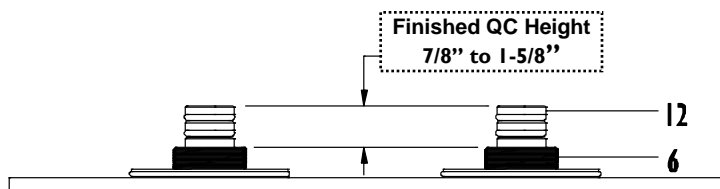
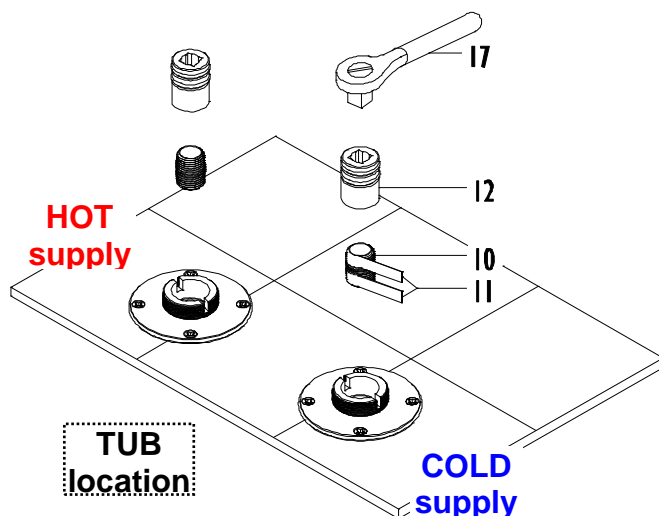


2

INSTALLING QUICK CONNECT

- Apply Teflon® TAPE (11) (not supplied) onto both ends on 1/2" NPT (10) nipple (not supplied)
- Insert 1/2" NPT (10) nipple into quick CONNECT (12) first and then using 1/2" drive RATCHET (17) tighten assembly into NIPPLE (4) in flooring rough

IMPORTANT: It is the responsibility of the **INSTALLER** to select the necessary length of 1/2" NPT (10) nipples to determine proper finished height (7/8" to 1-5/8") of the quick CONNECT (12).

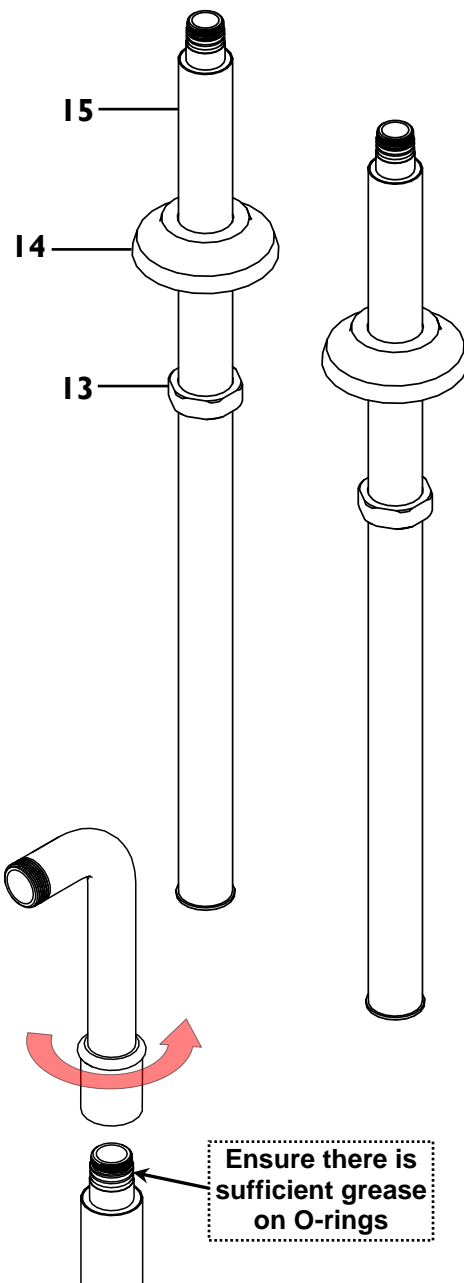


3

PREPARING LEGS

- Onto each LEG (15) slide tie down NUT (13) and COVER (14)
- Ensure that there is sufficient grease on both upper O-rings on LEG (15) and securely tighten ARM (15a)
- Repeat same procedure on other side

IMPORTANT: The LEGS (15) have *left-handed threads*, therefore, it is necessary to rotate ARMS (15a) *counter-clockwise* into LEG (15)



Left-handed
Threads
Turn ARMS
counter-
clockwise
into LEG

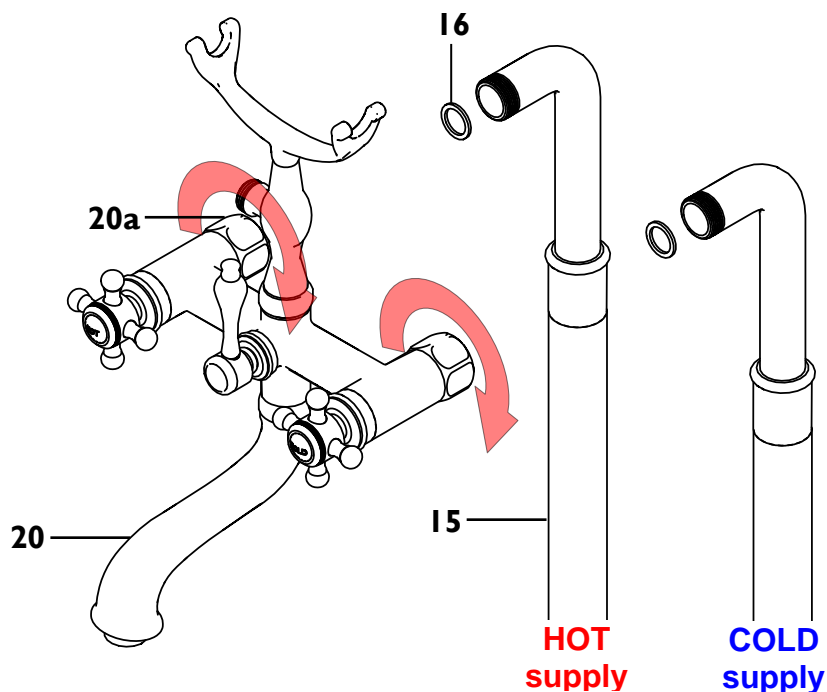
Ensure there is
sufficient grease
on O-rings

4

INSTALL LEGS ONTO BODY

- Place FIBER WASHER (16) in between LEG (15) and BODY (20) and securely tighten ROTATING NUT (20a)
- Repeat same procedure on other side

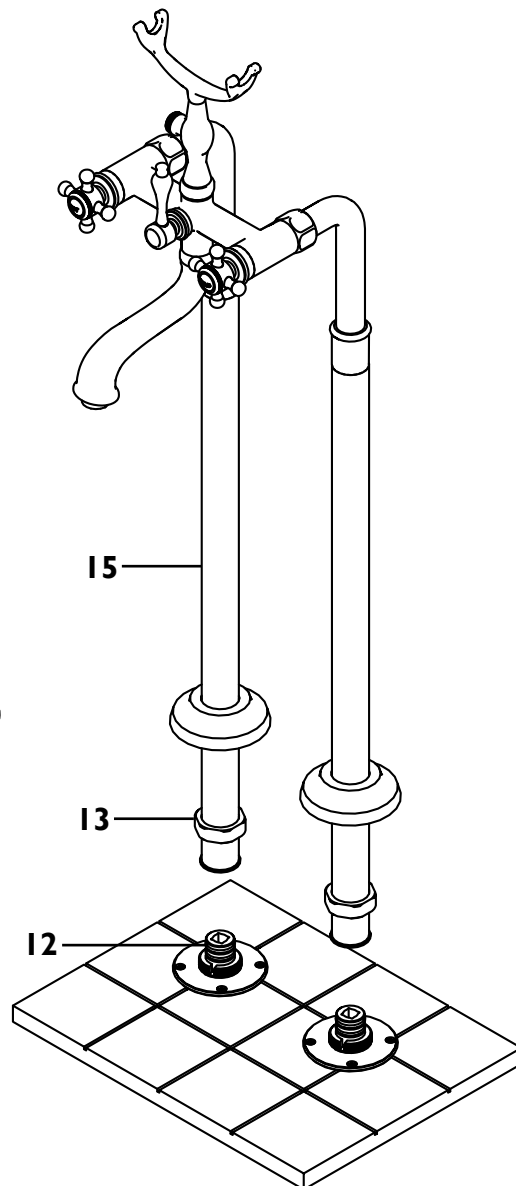
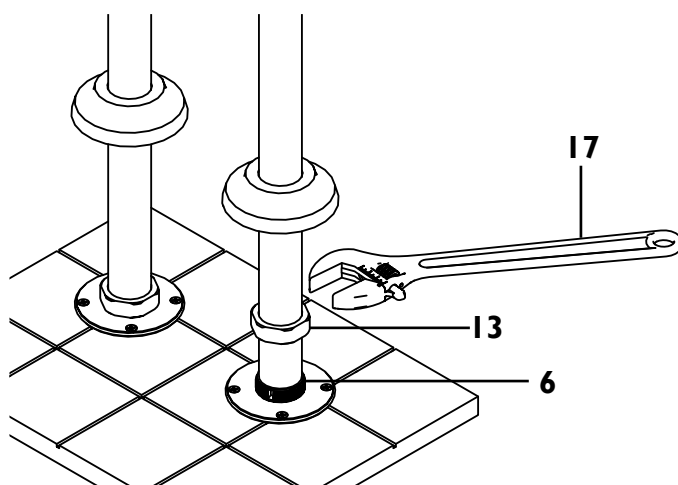
IMPORTANT: To prevent scratches or damage to finish, place clean microfiber towel over ROTATING NUT (20a) when using adjustable wrench.



5

ATTACH TO QUICK CONNECT

- Ensure that there is sufficient grease on both O-rings on quick CONNECT (12) and slide LEGS (15) onto quick CONNECTS (12)
- Hand tighten tie down NUT (13) onto SHANK (6)
- Using adjustable WRENCH (17) securely tighten tie down NUT (13) onto SHANK (6)
- Repeat same procedure on other side
- Turn water supply on and pressurized faucet to check for leaks



6 FINAL CONNECTIONS

- Slide COVERS (14) down LEGS (15) and secure to FLANGES (6), it may be necessary to twist and rotate COVER (14) to aid in proper seating onto FLANGE (6)
- Attach inlet of CHECK VALVE (19) to cradle OUTLET (20b) of BODY (20)
- Attach HEX (18b) nut of HOSE (18) to outlet of CHECK VALVE (19)
- Attach HANDSHOWER (21) on outlet of HOSE (18)
- Operate faucet diverter from tub spout to handshower and check for leaks

NOTE: Cradle OUTLET (20b) can be orientated in either direction by loosening CRADLE NUT (20c) and rotating cradle. Tighten using adjustable wrench.

IMPORTANT: To prevent scratches or damage to finish, place clean microfiber towel over CRADLE NUT (20c) when using adjustable wrench.

