

REF24BMBPNB

REFRIGERATOR 24" BOTTOM MOUNT INTEGRATED PANEL READY



Energy Star refrigerator & freezer with 8.6 cu.ft capacity.

Optimized airflow design keeps temperature constant and even throughout entire refrigerator.

Total No-Frost system: automated defrosting of evaporator ensures food stays always fresh.

1 full-width crisper with humidity-control & 1 with independent temperature control, 3 adjustable-height shelves and 3 door bins ensure organized storage and preservation of food.

1 extra large & 2 standard size drawers in freezer compartment ensure easy organization and retrieval of frozen goods.

Electronic touch interface with user-friendly controls for temperature management.

Interior LED lighting ensures maximum visibility.

Reversible doors for left or right swing configuration.

2 years parts & labor warranty.

PRODUCT FEATURES

| | |
|-----------------------|--|
| Size | W 24" |
| Volume | Ref 6.2 cu.ft / Frz 2.4 cu.ft |
| Door finish | Panel ready |
| User interface | Internal digital LED touch interface |
| Lighting | LED on the top |
| Refrigerator shelves | 1 stationary - 3 height adjustable |
| Refrigerator crispers | 1 drawer with adjustable humidity + 1 drawer with separate temperature control |
| Freezer compartment | 3 drawers |
| Door storage | 1 bin with lid - 2 height adjustable open bins |
| Settings | Super cool, Super freeze, Eco mode, Vacation mode |

TECHNICAL SPECIFICATIONS

| | |
|----------------------|-----------------------------------|
| Electrical supply | 115 V 60 HZ - 85 W - 0.8 Amp |
| Power connection | NEMA 5-15P with 41' "" power cord |
| Sound rating | 41 dbA |
| Energy consumption | 372.0 kwh/yr |
| Certification | CEC,ETL |
| Warranty | 2 years parts & labor |
| Packaging dimensions | W 22 7/16" H 72 7/16" D 22 9/16" |
| Weight | 139.0 lbs |

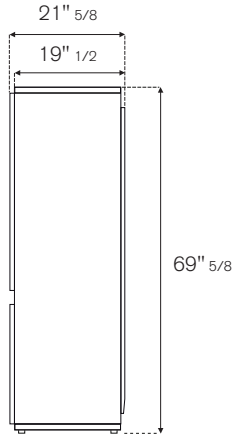


REF24BMBPNB

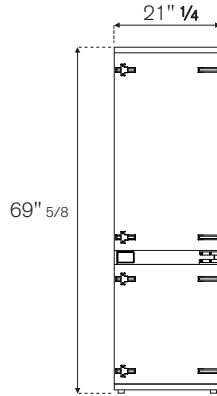
REFRIGERATOR 24" BOTTOM MOUNT INTEGRATED PANEL READY



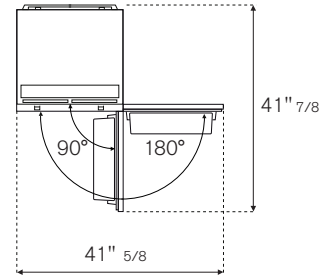
SIDE



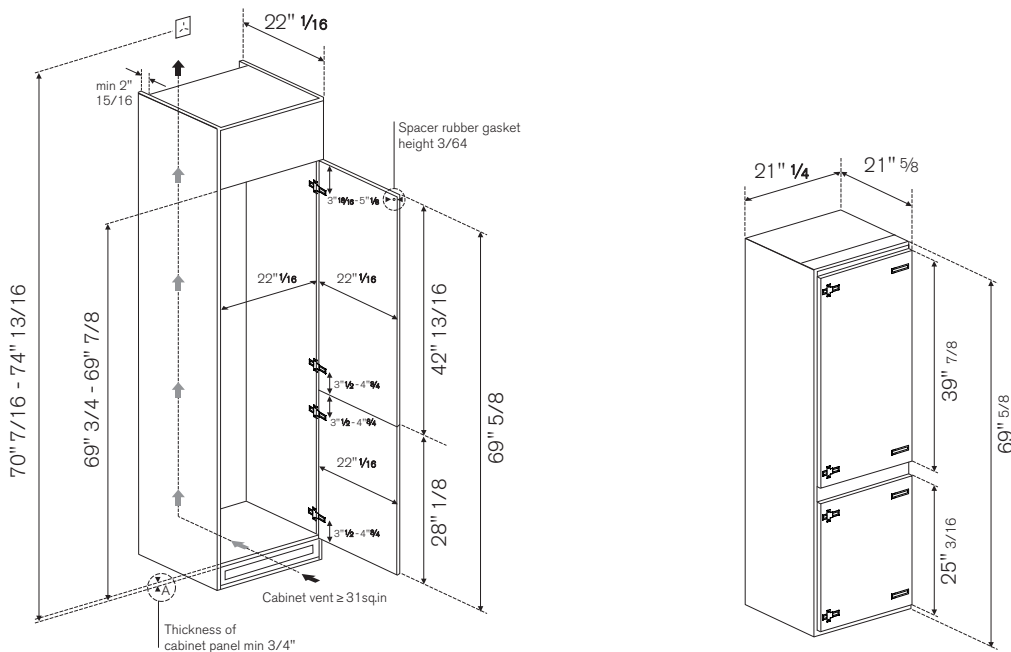
FRONT



TOP



CUTOUT DIMENSIONS



The refrigerator is installed on the cabinet base shelf and not on the kitchen floor.

ELECTRICAL CONNECTION

A properly-grounded, electrical receptacle should be installed. A separate circuit breaker servicing only this appliance is recommended. Do not use a multi-purpose socket with other electrical appliances.

INSTALLATION REQUIREMENTS

The max weight for the cabinet panels is 37.5 lbs (17kg) per panel.