



S19392-GA4LA

General Area Enclosed Outdoor Gravity Fed Safety Shower

- Ideal for cold climates where plumbed water supply is not available
- Rated for use in general area locations
- Classified by Underwriters Laboratories Inc. to ANSI/ISEA Z358.1.
- Designed to the National Electric Code
- Three piece water tank enclosure, steel frame and shelter construction for easier installation and maintenance
- Frame and tank enclosure design based on International Building Code and ASCE Code
- UL 508A Listed Industrial Control Panel(s) for US and Canada for electrical models
- 550 gallon tank provides ANSI/ISEA Z358.1 required 15 minute flush for simultaneous drench shower and eye/face wash activation
- Mechanical water level indicator and thermometer included

Lower Shelter

- 100% Fiberglass Surround Construction – Exterior Includes UV Inhibitor Gel-Coat
- Flame-Retardant Resin with a Class 1 Flame Spread Index per ASTM E-84
- Multi-directional drain system
- Insulation Factor Protection Rating R-8 (ASTM C518)

Standard Equipment

Safety Shower, Eyewash

The standard plastic showerhead is specially designed to exceed the flow and wash pattern requirements of ANSI/ISEA Z358.1. The head can easily be unscrewed for cleaning. Shower is activated by a stainless steel pull rod.

The Halo eye/face wash system offers a high performance rinsing platform that provides rapid relief to an individual's eyes that have been injured by chemicals or particulates. The eye/face wash provides water at a safe velocity while maintaining its effectiveness (exceeds minimum water flow of 3.0 GPM (11.4 L)). The eye/face wash is protected by a full bowl dust cover that activates the unit when it is opened. Eye/face wash sprayheads are made from an impact resistant ABS plastic.

Water Tank and Enclosure

The 550 gallon tank is made of high density polyethylene and surrounded by insulation and a safety yellow painted steel enclosure. An accessible manhole cover is located on top of the water tank. The water tank supplies enough water to provide the ANSI required 15 minute flush for simultaneous drench shower and eye/face wash activation. The 2" thick insulation around the water tank has a factor protection rating of R-10. The steel tank enclosure is designed to support a nominal snow load of 100 psf. The top of the tank enclosure is hinged and balanced with gas springs for easy opening.

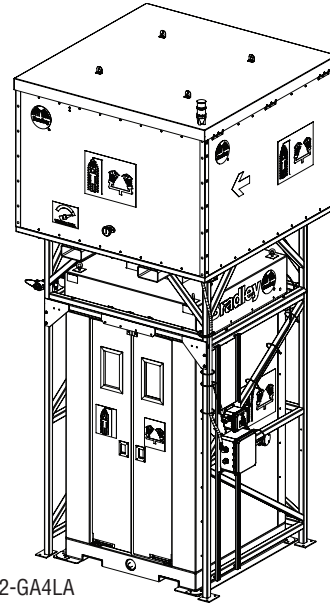
Integral forklift slots located on the underside of the tank enclosure make initial installation easier. During installation, the tank enclosure is fastened to the steel frame using fasteners. A forklift can also bring the tank enclosure down to ground level if needed for cleaning or maintenance.

Tank Water Heater

240V immersion water heater provides tepid water in cold environments and functions in temperatures down to -40°F. Tank heater includes an adjustable integral thermostat for reliable water temperature control. Water heater will be continuously immersed when the tank empties; the thermostat will shut the heater off when maximum temperature is reached regardless of tank water depth.

Steel Frame

The steel frame is designed to support all components and a full water tank. It is composed of 2" square steel beams with welded joints. It must be secured to a suitable concrete pad using (8) 1/2" diameter anti-corrosion expansion anchors (installer provided). Once properly secured, the steel frame structure is designed to withstand a continuous horizontal wind load of 82 mph. Painted safety yellow to protect against corrosion.



Model S19392-GA4LA

Water Connection

1-1/2" cam lock water connection to fill the tank is available at ground level for safety and is also more convenient for filling of the tank with potable water.

Water Level Indicator

A mechanical float inside the water tank is linked to an exterior water level indicator to easily allow the tank water level to be checked at all times.

Water Thermometer

A water thermometer is always included on the front exterior wall of the tank to allow for monitoring of the water temperature.

Signaling System

The signaling system is mounted to the steel frame and operates from one central control board. It offers several different easy to connect inputs and outputs and allows for a direct connection to a building management system. The integral horn operates at 108 dB at 2 feet to cut through ambient noise. The flashing signal light is available in an amber lens. The steady state beacon light has a green lens and provides assistance in finding the location of the safety fixture. The signaling system also features an auto reset/silence switch which can be used to silence the horn during an event while the signal light continues to flash and the water flows.

Model

S19392-GA4LA

240V General Area Enclosed Outdoor Gravity Fed Safety Shower with Tank Water Heater, Ceiling Light and Signaling System



Bradley Enclosed Outdoor Gravity Fed Safety Showers are non-cancelable, non-refundable and non-returnable.



S19392-GA4LA

General Area Enclosed Outdoor Gravity Fed Safety Shower

Lower Shelter Construction - External

Shelter

The lower shelter is installed below the tank enclosure and is constructed from 100% FRP (fiberglass-reinforced plastic) that is laminated and sealed around an insulating core. The FRP is coated with a UV-inhibiting gel coat to protect the roof, walls and base from degradation due to prolonged exposure to sunlight, harsh chemicals or salt-laden marine environments.

A special flame-retardant polyester resin has a Class 1 flame spread index per ASTM E-84 and a smoke developed index of more than 450.

The corrosion-resistant enclosure helps protect against internal freezing with an insulation factor of R-8.

Exterior of shelter is safety yellow (RAL-1018), and includes safety decals directing the injured party to the weather resistant double-acting spring hinge doors that include stainless steel handles and safety glass viewing windows. The crash doors include weather strips to maintain the maximum seal against wind, rain and snow.

The FRP base includes extruded channels for added protection when moving the shelter with a fork truck. Stainless steel lifting eyes are attached to the roof, permitting optional crane lifting when placing the unit.

Lower Shelter Construction - Internal

Shower Drain

The shower area includes a sloped drain below a removable fiberglass floor grate. Three drain ports are provided (left, center, right) and can be connected to external drain plumbing in any configuration using a 3" NPT fitting in any port.

Convection Heater

Internal convection space heater prevents water from freezing in the pipes down to -40°F and maintains a comfortable enclosed temperature.

Ceiling Light

Unit includes an internal ceiling mounted vapor sealed light (sustained illumination).

Bowl and Dust Cover

Bowl and dust cover is constructed of yellow impact-resistant plastic.

- Customer to provide incoming power with circuit protection
- Only one electrical connection is required.

Code Compliance and Certifications



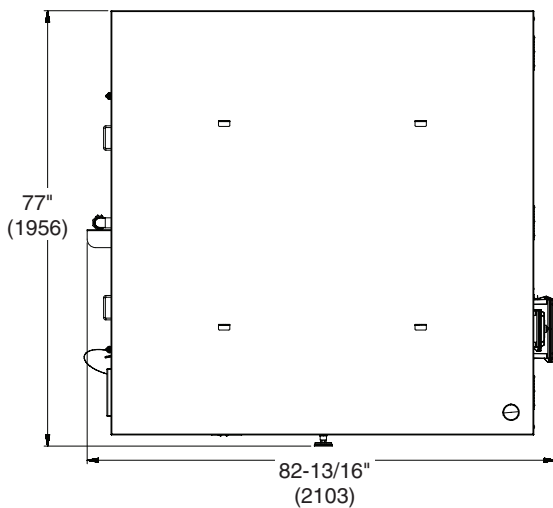
UL Classified to ANSI/ISEA Z358.1



UL Listed Industrial Control Panel(s) for US and Canada

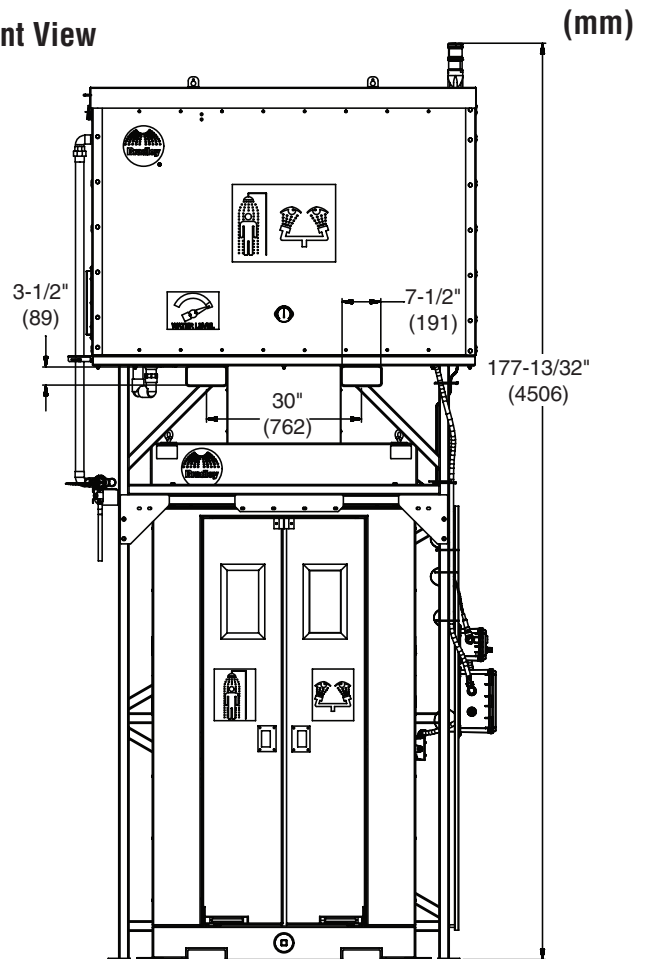
Designed to the National Electrical Code (NEC/NFPA70)

Top View



Units are non-cancelable, non-refundable and non-returnable.

Front View





S19392-GA4LA

General Area Enclosed Outdoor Gravity Fed Safety Shower

Left Side View

Right Side View

(mm)

