

9569 Reversible Phenolic Shower Seat



Installation



WARNING: Be sure to use reinforced backing behind wall where mounting screws or anchoring devices are installed to ensure adequate support for the shower seat. All anchoring devices (supplied by installer) must be appropriate for specific wall construction. Severe personal injury and/or property damage may result from improper mounting.

Tools Required for installation: Level, drill, drill bit and $\frac{3}{8}$ " and $\frac{7}{16}$ " sockets (or appropriate size to accommodate fasteners used).

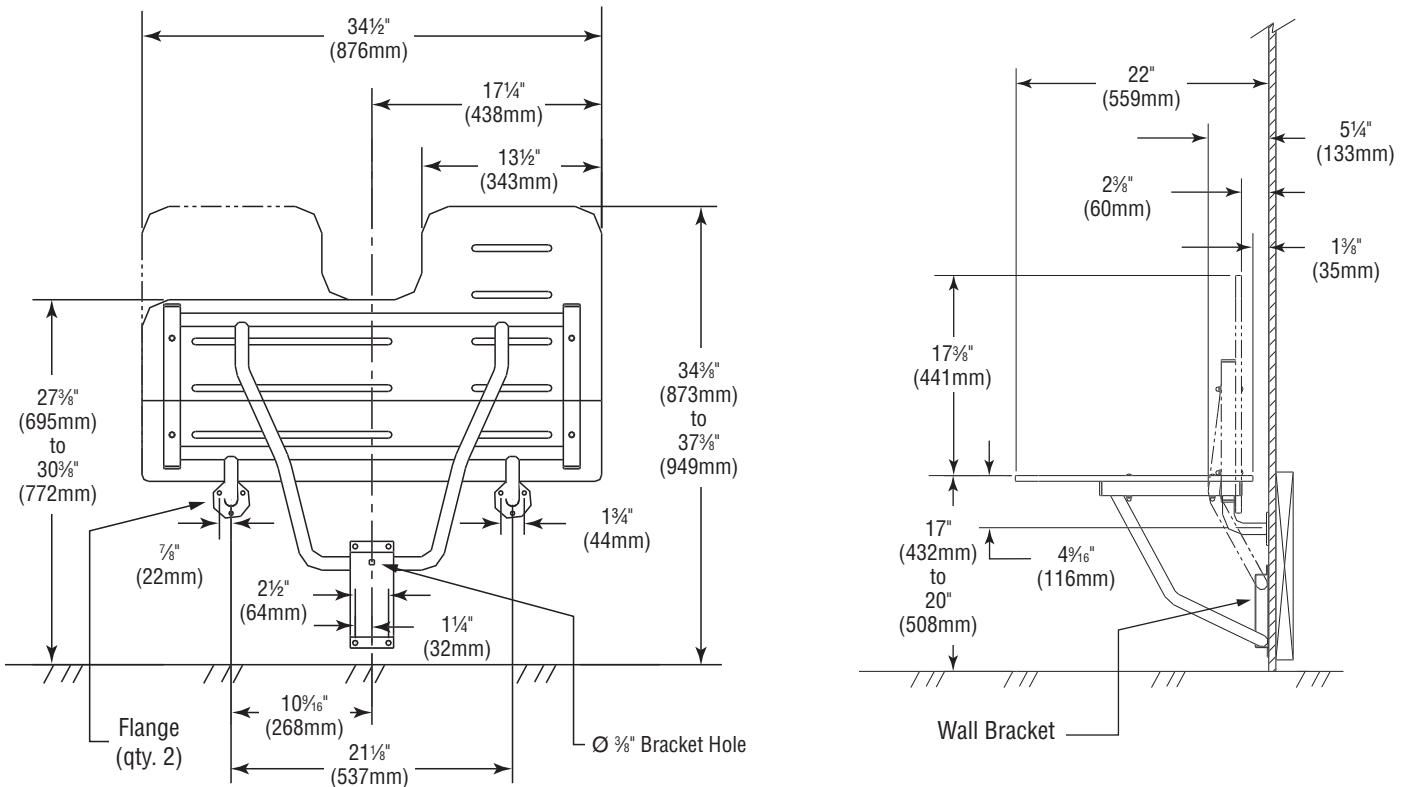
1. Open the template and carefully cut it straight across the bottom at the desired mounting height (recommended ADA-compliant height is 18" above the finished floor). Position the template on the wall with the bottom edge meeting the floor (the top of the template must be level to ensure the seat will be level when mounted). Tape the template against the wall, then measure, mark and drill the ten mounting holes appropriate for your height requirement.

NOTE: When securing the mounting flanges to the wall, check to make sure that the seat surface is level and that the flanges are positioned flat against the wall.

2. Position the shower seat mounting flanges against the wall so that the seat is level. Secure the flanges to the wall with the appropriate fasteners. Before proceeding with procedure #3, check to make sure that the seat moves freely from the horizontal to the vertical position.

NOTE: When installing the wall bracket, make sure the $\frac{3}{8}$ " round hole is at the TOP of the bracket.

3. Pull the wall bracket apart slightly and insert the support tube into the bracket. With the support tube resting inside, secure the wall bracket on the wall with appropriate fasteners.



TO REVERSE SEAT CONFIGURATION FROM LEFT-HAND TO RIGHT-HAND

- a. Remove the four acorn nuts and lockwashers from the underside of the seat; remove the carriage bolts.
- b. Lift up the seat and flip it 180° (to right-hand configuration).
- c. Reinstall the seat with the carriage bolts lockwasher and acorn nuts, tightening the nuts to 20 in. lbs.

NOTE: It may be necessary to hit the head of the carriage bolt to "set" the bolt so that it is flush with the shower seat.