

4

3

2

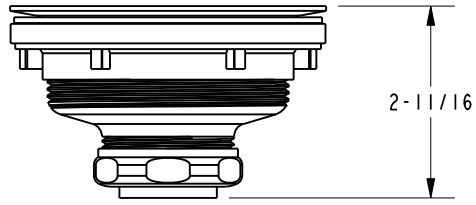
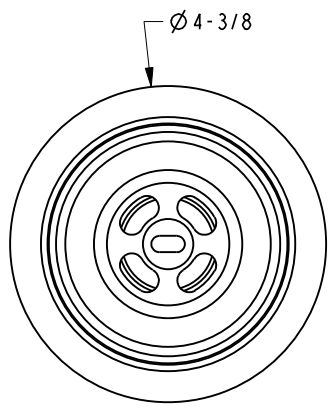
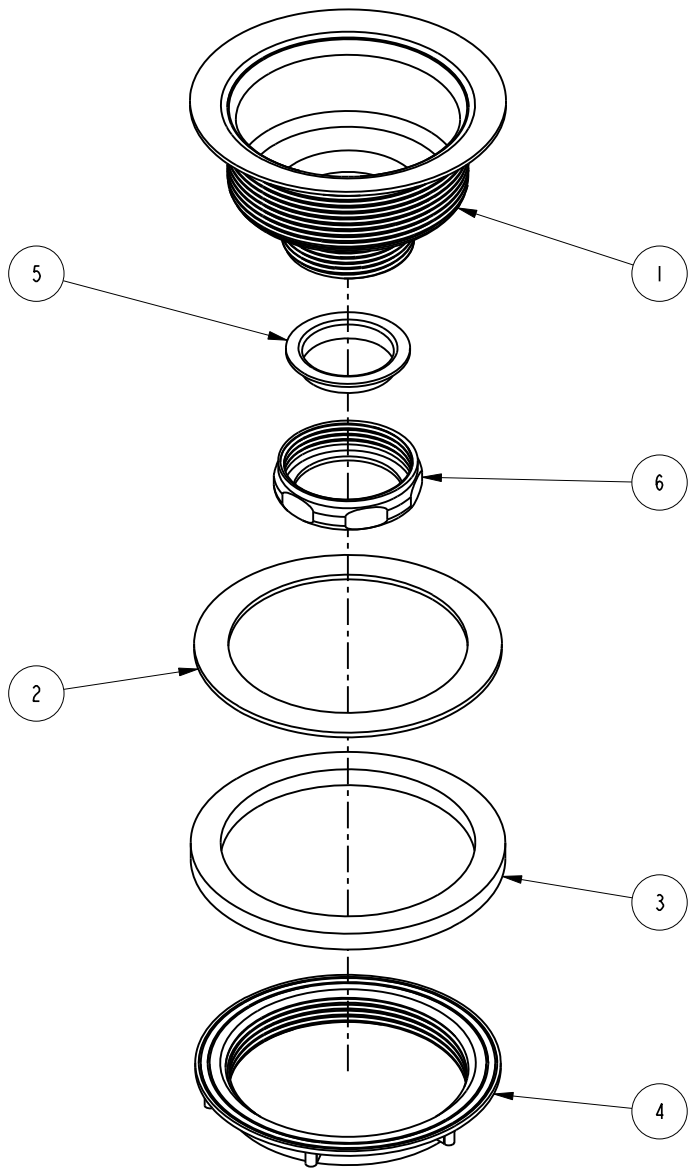
1

BILL OF MATERIAL (CURRENT LEVEL)

ITEM	PT/ASSY	DESCRIPTION	TYPE	QTY.
1	50086	FLANGE HOUSING	PART	1
2	91128	GSKT, .08 X 3.325 ID, FOAM	PART	1
3	91125	GSKT RBR	PART	1
4	50079	LOCKNUT 3 3/8	PART	1
5	91127	WASHER-PLASTIC	PART	1
6	50243	NUT SLIP JOINT 1-1/2	PART	1

D

D



C

C

B

B

A

A

COPYRIGHT 2005 BRASSTECH, INC. THESE DRAWINGS AND THE DESIGNS DEPICTED HEREIN ARE THE PROPRIETARY PROPERTY OF BRASSTECH. ANY USE OR REPRODUCTION IS SUBJECT TO THE EXPRESS APPROVAL OF BRASSTECH. UNAUTHORIZED USE IS STRICTLY PROHIBITED. ALL RIGHTS RESERVED.

BRASSTECH
INCORPORATED

2001 CARNEGIE AVE.
SANTA ANA, CA 92705
(949) 417-5207

BODY ONLY FOR POST TYPE

ASSY. NO.	121-1	-	-	-
SCALE	.375	REF.	SHEET 1 OF 1	REV
			REV	DESC
			DATE	

4

3

2

1