



Handheld Bidet Sprayer Installation



Parts Included:

- Bidet Sprayer Head
- T-Valve with Flat Rubber Washer
- Metal Spiral Bidet Hose
- Sprayer Holster with Mounting Screws

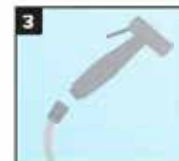
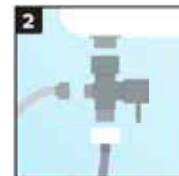
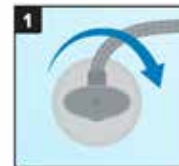
NOTE: For your convenience, installation videos are available at brondell.com

Before Installation:

Check the water supply line: If the line that connects the toilet tank to the water shutoff valve is a rigid pipe, you will need to purchase a flexible hose to replace it before installing the Bidet Sprayer. The length of the hose and size of the connectors will vary.

Installation:

1. Turn off the water supply valve for the toilet (at the wall) and flush the toilet. Hold down the handle to completely empty the tank.
2. Disconnect the flexible water supply line directly under the toilet tank. Put the Flat Rubber Washer inside the top of the T-valve. Connect the T-valve at the toilet tank, and reconnect the flexible water supply line to the bottom of the T-valve. Be sure not to overtighten the connections.
3. Attach one end of the Bidet Hose to the open end of the T-valve and the other end to the Bidet Sprayer Head.
4. Mount the Sprayer Holster:
 - a. Toilet Mount – Attach the Holster Mount to the Toilet Tank Clip using the small screw provided. Hang the Sprayer Holster on the side of the toilet tank in the desired location.
 - b. Wall Mount – Using only the Holster Mount, find an appropriate spot on the wall near the toilet and use the provided drywall screws and anchors to attach the Sprayer Holster to the wall.
5. Turn the water supply valve back on at the wall and check for leaks using plumber's tape when necessary. Wait 5 minutes and check again. If there are no leaks, then you are done!



Operation:

1. Open the T-valve to allow water to flow to the Bidet Sprayer.
2. Point the Bidet Sprayer in the appropriate direction and press the button to release the water wash.
3. Close the T-valve to turn off the water when finished.

⚠ WARNING ⚠ AFTER EACH USE, YOU MUST TURN THE T-VALVE OFF to stop the water supply to the Bidet Hose and Sprayer. All hand-held sprayers and hoses have seals and parts that can leak from rough handling, misuse, dropping the sprayer, or daily wear and tear. **TO AVOID WATER DAMAGE TO YOUR HOME OR PROPERTY NEVER LEAVE THE HOSE AND SPRAYER UNDER PRESSURE WHEN NOT USING THE PRODUCT.**