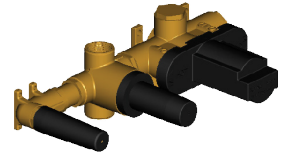


PENTA **PE456**

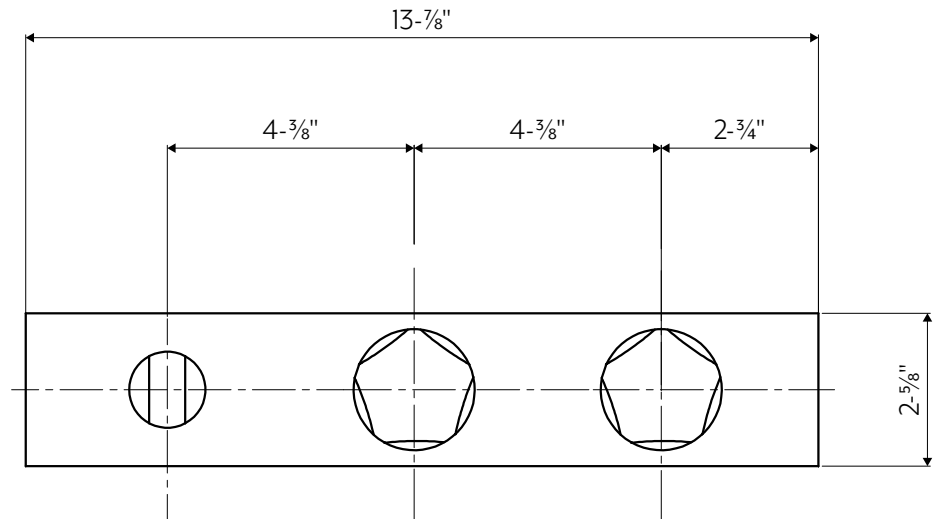
Stainless Steel Thermostatic Set with 3-way Volume Control

PE456-SSM	Stainless Steel Matte
PE456-SSP	Stainless Steel Polished
PE456-SSMB	Stainless Steel Matte Black PVD
PE456-SSMG	Stainless Steel Matte Gold PVD
PE456-SSMRG	Stainless Steel Matte Rose Gold PVD*
PE456-SSMT	Stainless Steel Matte Titanium PVD*

REQUIRED ROUGH
(not supplied)



- Thermostatic control and two way volume control: allows to control the handshower and two additional water outlets
- 3/4" NPT inlets and outlets
- Marine Grade 316L machined stainless steel construction
- Water outlet with handshower support are supplied
- Handshower to be ordered separately
- Flow rate is 8.7 GPM at 20 PSI
- IAPMO (cUPC) listed
- Fully recyclable
- 100% lead free
- Areas of application: Indoor & outdoor

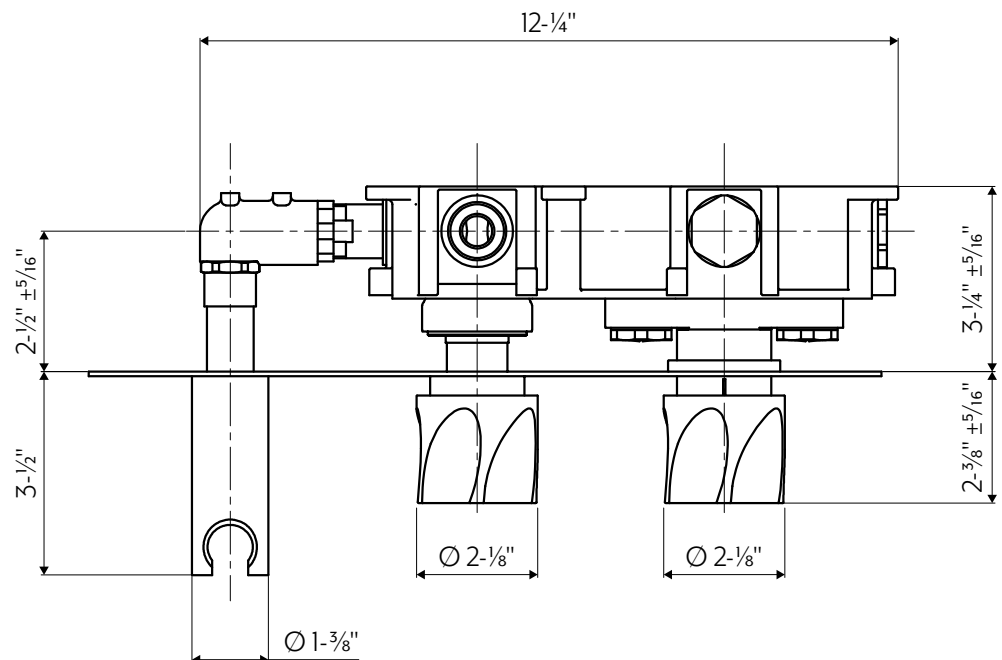


COMPATIBLE WITH (not supplied)

- SV9KPM.318 1-3/8" Valves extension kit
- AC920 Short Pen Stainless Steel Handshower with Hose
- AC922 Double Pen Stainless Steel Handshower with Hose
- AC924 Round Stainless Steel Handshower with Hose

REQUIRED (not supplied)

- SV9INC-312-US Rough-in unit produced from Brass; universal for all finishes



* Available by special order only.
Please allow 14-16 weeks lead-time.

393 Fortune Blvd, Milford, MA 01757 USA
1.844.992.8371

fortebrands.com



Exclusively distributed in North America by Forte Brands.