

MINIMAL FN **MB247TN**

Stainless Steel Floor-mount Basin Faucet



MB247TN-SSM	Stainless Steel Matte*
MB247TN-SSP	Stainless Steel Polished*
MB247TN-SSMB	Stainless Steel Matte Black PVD*
MB247TN-SSMGL	Stainless Steel Matte Gilded PVD*
MB247TN-SSMBR	Stainless Steel Matte Bronze PVD*
MB247TN-SSMT	Stainless Steel Matte Titanium PVD*

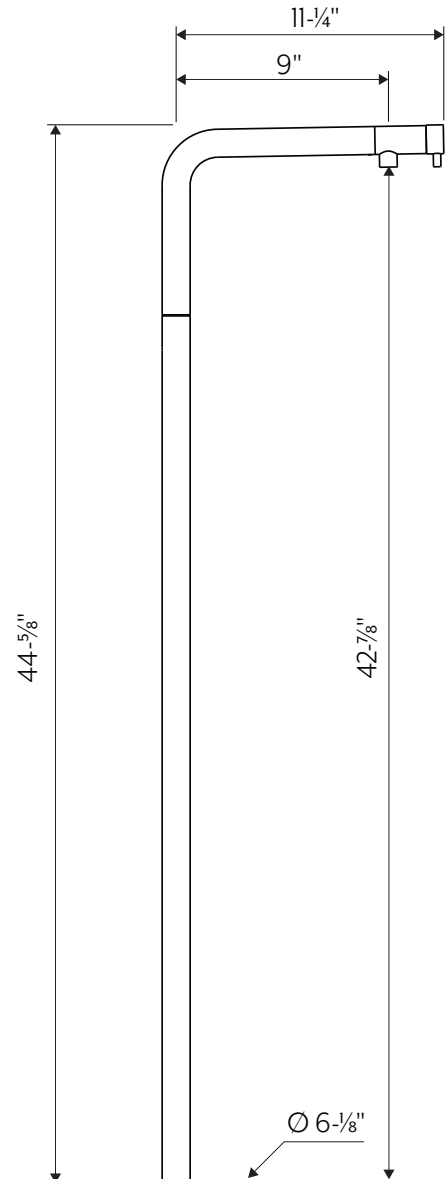
- Floor-mounted single lever basin faucet
- Marine Grade 316L machined stainless steel construction
- Unique design concept with control mixer on the head of the faucet
- Flow rate is 1.2 GPM at 60 PSI
- IAPMO (cUPC) pending
- ADA compliant
- Fully recyclable
- 100% lead free
- Areas of application: Indoor & outdoor

COMPATIBLE WITH (not supplied)

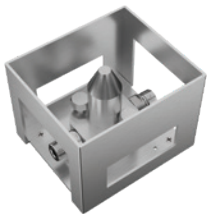
- AC990 Stainless Steel Universal Push Drain

REQUIRED (not supplied)

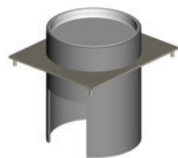
- X29-1059-US rough-in valve produced from solid stainless steel



REQUIRED ROUGH
X29-1059-US
(not supplied)



OPTIONAL RESIN KIT
SV9KPR-254-US
(not supplied)
See INDEX



For installation in
cement or resin floors.
Not needed for tile floors.

* Available by special order only. Please allow 14-16 weeks lead-time.

FB Forte Brands™

393 Fortune Blvd, Milford, MA 01757 USA

1.844.992.8371

fortebrands.com

MGS
BAGNO

Exclusively distributed in North America by Forte Brands.