

For Residential and Commercial Applications

Job Name		Engineer / Architect	
Job Location		Wholesaler	
Submittal Date		Contractor	

TBV12F Full-Port Gas Ball Valve

Use: For use with natural, manufactured, mixed, liquefied-petroleum (LP) gas, and LP gas-air mixtures.

Note: The National Fuel Gas Code requires a gas shut-off valve installed upstream, within "easy reach" or 6 feet of the gas appliance

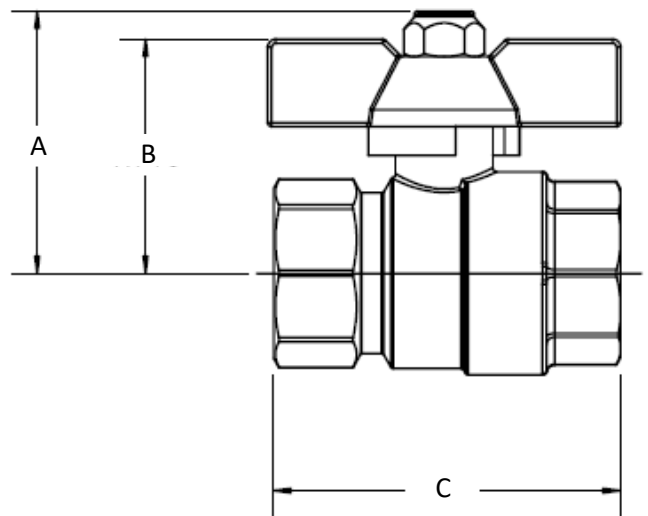
Design Features:

- **Heavy duty, forged brass body** eliminates pinhole leaks commonly associated with cast products
- **Blow-out proof stem** is assembled from the inside with double o-rings for reliable performance
- **Right-sized handles** ensure on-off operation even in tight installations
- **Quarter turn operation** for easy on/off flow control
- **Full flow operation.** Full port design provides abundant water flow without obstruction
- **Approved for** indoor/outdoor use
- **100% leak tested**

Operating Specifications:

Temperature: 40° - 180° F
Pressure: 5 PSI maximum

VALVE MATERIAL SPECIFICATIONS	
Body	Forged brass
Retainer	Forged brass
Ball	Brass, chrome plated
Seat	PTFE
Stem	Brass
O-ring	High-temperature rubber
Washer	PTFE
Handle	Aluminum
Screw	Steel, zinc plated



PART SPECIFICATIONS (Inches)			
Model	DIM. A	DIM. B	DIM. C
TBV12F	1.92	1.72	2.54

Part Listing:

- TBV12F 3/4" FIP x 3/4" FIP, full port

Country of Origin:

Made in Italy

Listings and Certifications:

- CSA listed to ANSI Z21.15 / CSA 9.1, ANSI / ASME B16.44 and CGA CR91-002

This specification and all information contained herein is the confidential and exclusive property of Brasscraft Manufacturing Company and shall not be disclosed to others without the written consent of Brasscraft Mfg. Co. This specification must be returned to Brasscraft Mfg. Co. if requested.

