

For Commercial Applications

Job Name		Engineer / Architect	
Job Location		Wholesaler	
Submittal Date		Contractor	

PRB Series Malleable Black Iron Pipe Reducer Bushing

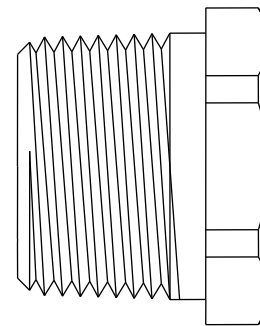
Use: Commercial food service applications

Design Features:

- **Finish machined one-piece iron body** provides strength, durability, and long-lasting performance

Operating Specifications:

Temperature: 32° to 125° F
Pressure: 1/2 PSI maximum

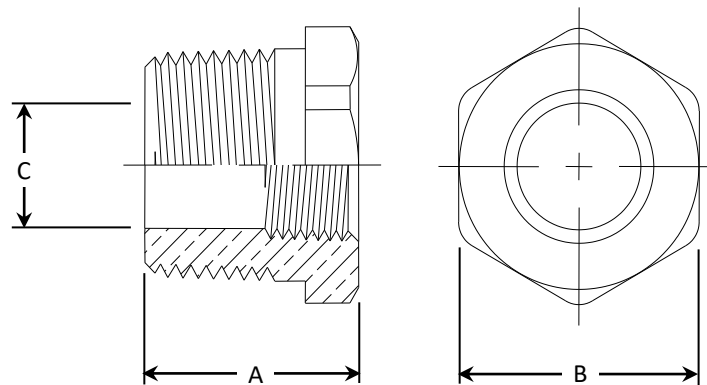


MATERIAL SPECIFICATIONS	
Fitting	Malleable black iron

Part Listing:

- PRB-12-8 3/4" MIP x 1/2" FIP pipe reducing bushing
- PRB-16-12 1" MIP x 3/4" FIP pipe reducing bushing

PART DIMENSIONS (Inches)			
Model	DIM. A	HEX. B	DIM. C
PRB-12-8	1.00	1.13	.70
PRB-16-12	1.09	1.38	.89



This specification and all information contained herein is the confidential and exclusive property of Brasscraft Manufacturing Company., and shall not be disclosed to others without the written consent of Brasscraft Mfg. Co. This specification must be returned to Brasscraft Mfg. Co. if requested.

