

**For Residential and Commercial Applications**

Job Name		Engineer / Architect	
Job Location		Wholesaler	
Submittal Date		Contractor	

## P48W CPVC Solvent Weld x Female Iron Pipe Drop-Ear Elbow

**Use:** For use in potable water distribution systems to convert CPVC piping to iron pipe

**Design Features:**

- **Pre-torqued** to eliminate need for tightening on the job
- **Clean, uniform threads** insure positive threaded connections and reduces potential for cross-threading

**Operating Specifications:**

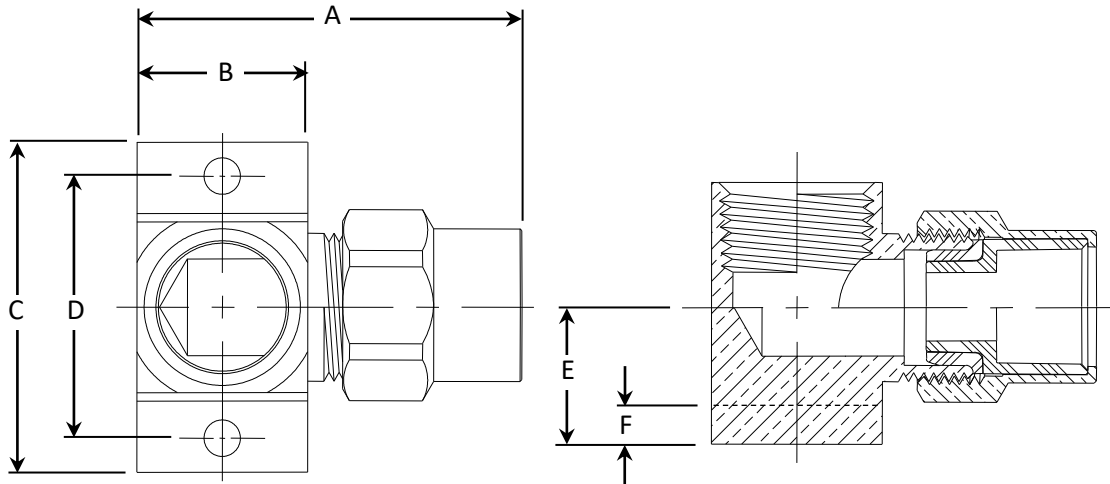
**Temperature:** 40° to 180° F at maximum operating pressures  
**Operating Pressure:** 125 PSI minimum

MATERIAL SPECIFICATIONS	
<b>Fitting Body</b>	Brass
<b>CPVC Insert</b>	CPVC
<b>CPVC Washer</b>	Rubber
<b>CPVC Nut</b>	Brass

PART DIMENSIONS (Inches)						
Model	DIM. A	DIM. B	DIM. C	DIM. D	DIM. E	DIM. F
P48W	2.13	.94	1.81	1.44	.75	.30

**Part Listing:**

- P48W R      1/2" nom CPVC x 1/2" FIP, rough finish
- P48W RBT    1/2" nom CPVC x 1/2" FIP, rough finish, bulk



This specification and all information contained herein is the confidential and exclusive property of Brasscraft Manufacturing Company, and shall not be disclosed to others without the written consent of Brasscraft Mfg. Co. This specification must be returned to Brasscraft Mfg. Co. if requested.