

*For Residential and Commercial Applications*

Job Name		Engineer / Architect	
Job Location		Wholesaler	
Submittal Date		Contractor	

## F1-\*\*C/ F3-\*\*C Copper Faucet Riser w/ Rubber Nosepiece & Brass Ring

**Use:** For use in potable water distribution systems in accessible locations only

**Design Features:**

- **One-piece construction**
- **Cut to Length** for professional finished appearance

**Operating Specifications:**

**Temperature:** 40°- 180° F  
**Pressure:** 125 PSI maximum

**Tubing Diameter:** 0.38" O.D.



MATERIAL SPECIFICATIONS	
<b>Flared Tube</b>	Copper
<b>Washer</b>	Rubber
<b>Ring</b>	Brass

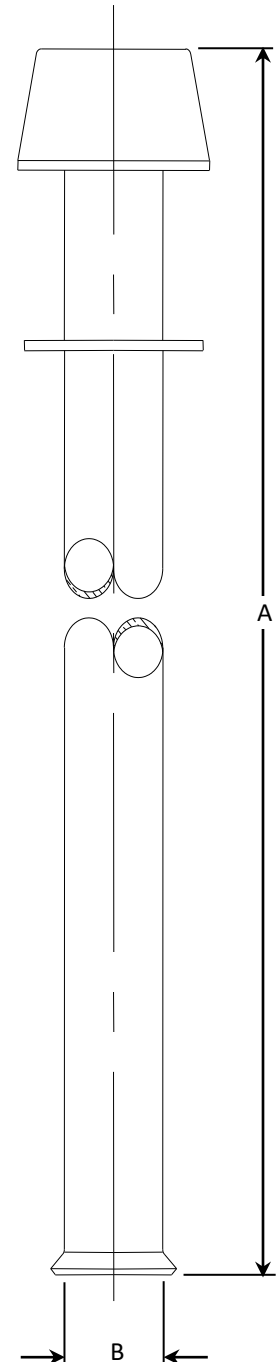
PART DIMENSIONS (Inches)		
Model	DIM. A	DIA. B
F1-11C	11.06	3/8
F1-17C	17.00	3/8
F1-20C	20.00	3/8
F3-11C	11.06	1/2
F3-20C	20.00	1/2

**Part Listing:**

- F1-17C C      3/8" OD tube x 17" length, chrome plated
- F1-20C C      3/8" OD tube x 20" length, chrome plated
- F1-20C R      3/8" OD tube x 20" length, rough finish
- F3-20C C      1/2" OD tube x 20" length, chrome plated

**Listings & Certifications:**

- IAPMO listed to ASME A112.18.1 / CSA B125.1 (includes NSF/ANSI372 and NSF61)



*This specification and all information contained herein is the confidential and exclusive property of Brasscraft Manufacturing Company and shall not be disclosed to others without the written consent of Brasscraft Mfg. Co. This specification must be returned to Brasscraft Mfg. Co. if requested.*