

**For Residential and Commercial Applications**

Job Name		Engineer / Architect	
Job Location		Wholesaler	
Submittal Date		Contractor	

## 72 Series Compression x Male Iron Pipe Tees

**Use:** For use with potable water in instrumentation, hydraulic, and pneumatic systems. Designed for use with aluminum, copper, and plastic\* tubing. Not intended for use with steel tubing.

\* Plastic tubing requires a plastic insert and a sleeve (see 60PT & 63PT submittal forms for details)

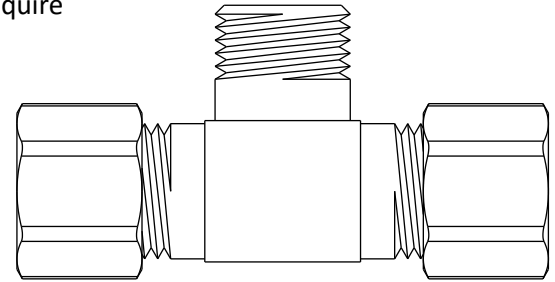
**Design Features:**

- **Little to no tube preparation.** Compression fittings do not require flaring, soldering, or other types of tube preparation
- **Available in** a broad range of sizes
- 

**Operating Specifications:**

**Temperature:** -65° - 250° F at max operating pressures

**Working Pressure:** See chart below



WORKING PRESSURE		
PSI	Tube OD	Tube Wall (Inches)
400	1/8"	.030
400	3/16"	.030
300	1/4"	.030
300	5/16"	.032
200	3/8"	.032
200	1/2"	.032
150	5/8"	.035
100	3/4"	.035
75	7/8"	.035

**Standard**

FITTING MATERIAL SPECIFICATIONS	
<b>Body</b>	Brass
<b>Compression Sleeve</b>	Brass
<b>Compression Nut</b>	Brass

**Low-lead**

FITTING MATERIAL SPECIFICATIONS	
<b>Body</b>	Low-lead brass
<b>Compression Sleeve</b>	Brass
<b>Compression Nut</b>	Brass

**Standard Part Listing:**

- 72-2-2            1/8" OD tube x 1/8" OD tube x 1/8" MIP
- 72-3-2            3/16" OD tube x 3/16" OD tube x 1/8" MIP
- 72-4-2            1/4" OD tube x 1/4" OD tube x 1/8" MIP
- 72-4-2-1 B       1/4" OD tube x 1/4" OD tube x 1/8" MIP – body only, bulk
- 72-4-4            1/4" OD tube x 1/4" OD tube x 1/4" MIP

*This specification and all information contained herein is the confidential and exclusive property of Brasscraft Manufacturing Company and shall not be disclosed to others without the written consent of Brasscraft Mfg. Co. This specification must be returned to Brasscraft Mfg. Co. if requested.*

# 72 Series Compression x Male Iron Pipe Tees

**Standard Part Listing cont.:**

- 72-4-4-1 B      1/4" OD tube x 1/4" OD tube x 1/4" MIP – body only, bulk
- 72-5-2            5/16" OD tube x 5/16" OD tube x 1/8" MIP
- 72-5-2-1 B      5/16" OD tube x 5/16" OD tube x 1/8" MIP – body only, bulk
- 72-5-4            5/16" OD tube x 5/16" OD tube x 1/4" MIP
- 72-5-4-1 B      5/16" OD tube x 5/16" OD tube x 1/4" MIP – body only, bulk
- 72-6-2            3/8" OD tube x 3/8" OD tube x 1/8" MIP
- 72-6-4            3/8" OD tube x 3/8" OD tube x 1/4" MIP
- 72-6-4 B         3/8" OD tube x 3/8" OD tube x 1/4" MIP, bulk
- 72-6-4-1 B      3/8" OD tube x 3/8" OD tube x 1/4" MIP – body only, bulk
- 72-6-6            3/8" OD tube x 3/8" OD tube x 3/8" MIP
- 72-6-6-1 B      3/8" OD tube x 3/8" OD tube x 3/8" MIP – body only, bulk
- 72-8-6            1/2" OD tube x 1/2" OD tube x 3/8" MIP
- 72-8-8            1/2" OD tube x 1/2" OD tube x 1/2" MIP
- 72-10-8          5/8" OD tube x 5/8" OD tube x 1/2" MIP

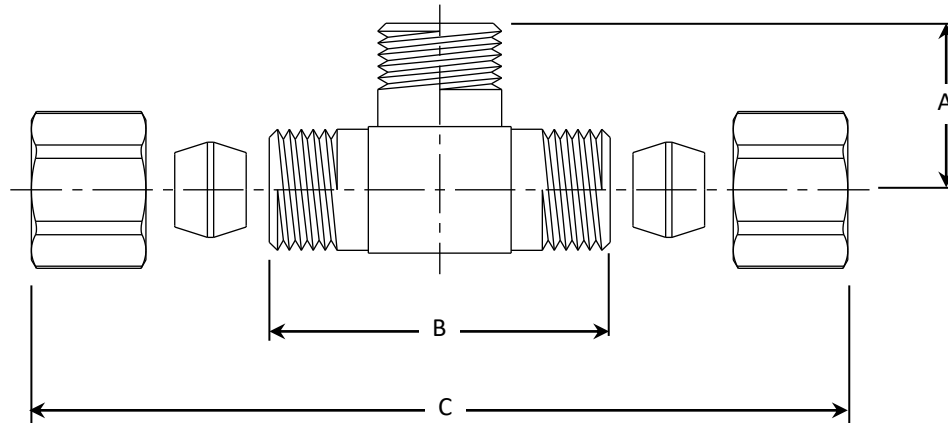
**Low-lead Part Listing:**

- 72-4-2X            1/4" OD tube x 1/4" OD tube x 1/8" MIP
- 72-4-2-1X B      1/4" OD tube x 1/4" OD tube x 1/8" MIP – body only, bulk
- 72-4-4X            1/4" OD tube x 1/4" OD tube x 1/4" MIP
- 72-4-4-1X B      1/4" OD tube x 1/4" OD tube x 1/4" MIP – body only, bulk
- 72-6-6X            3/8" OD tube x 3/8" OD tube x 3/8" MIP
- 72-6-6-1X B      3/8" OD tube x 3/8" OD tube x 3/8" MIP – body only, bulk

PART DIMENSIONS (Inches)			
Model	DIM. A	DIM. B	DIM. C
72-2-2	.71	1.20	1.65
72-3-2	.71	1.24	1.75
72-4-2	.71	1.27	1.82
72-4-2-1	.71	1.27	N/A
72-4-2-1X	.53	1.10	N/A
72-4-2X	.53	1.10	1.71
72-4-4	.82	1.38	1.56

PART DIMENSIONS (Inches)			
Model	DIM. A	DIM. B	DIM. C
72-4-4X	.76	1.26	1.84
72-4-4-1	.89	1.38	N/A
72-4-4-1X	.76	1.26	N/A
72-5-2	.76	1.43	2.02
72-5-2-1	.76	1.45	N/A
72-6-2	.75	1.53	2.10
72-6-4	.90	1.57	2.15

PART DIMENSIONS (Inches)			
Model	DIM. A	DIM. B	DIM. C
72-6-6	.98	1.57	2.15
72-6-6X	.98	1.43	2.05
72-6-6-1	.98	1.57	N/A
72-6-6-1X	.86	1.45	N/A
72-8-6	1.14	1.88	2.57
72-8-8	1.21	1.96	2.62
72-10-8	1.28	2.13	2.82



*This specification and all information contained herein is the confidential and exclusive property of Brasscraft Manufacturing Company and shall not be disclosed to others without the written consent of Brasscraft Mfg. Co. This specification must be returned to Brasscraft Mfg. Co. if requested.*