

**For Residential and Commercial Applications**

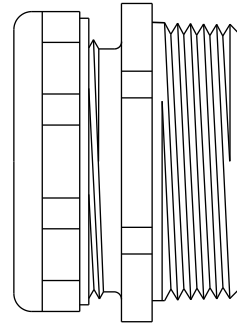
Job Name		Engineer / Architect	
Job Location		Wholesaler	
Submittal Date		Contractor	

## 190 / 192 / 196 Drain Waste Connector - Compression x MIP

**Use:** For use in waste drainage systems

**Design Features:**

- **Extruded one-piece body** eliminates potential for pin holes and porosity
- **Clean, uniform threads** ensure positive threaded connections and reduce potential for cross-threading
- **Full flow waterway** with smooth, uniform internal surfaces
- **Uniform wall thickness** with close dimensional tolerance assurance means no variations
- **Smooth finish** simplifies assembly with no burrs or rough surfaces to catch or hang up during installation



**Operating Specifications:**

**Temperature:** 40° to 140°F

**Standard**

FITTING MATERIAL SPECIFICATIONS	
<b>Body</b>	Brass
<b>Compression Ring</b>	Brass
<b>Nut</b>	Zinc, die cast plated; brass; or brass, plated

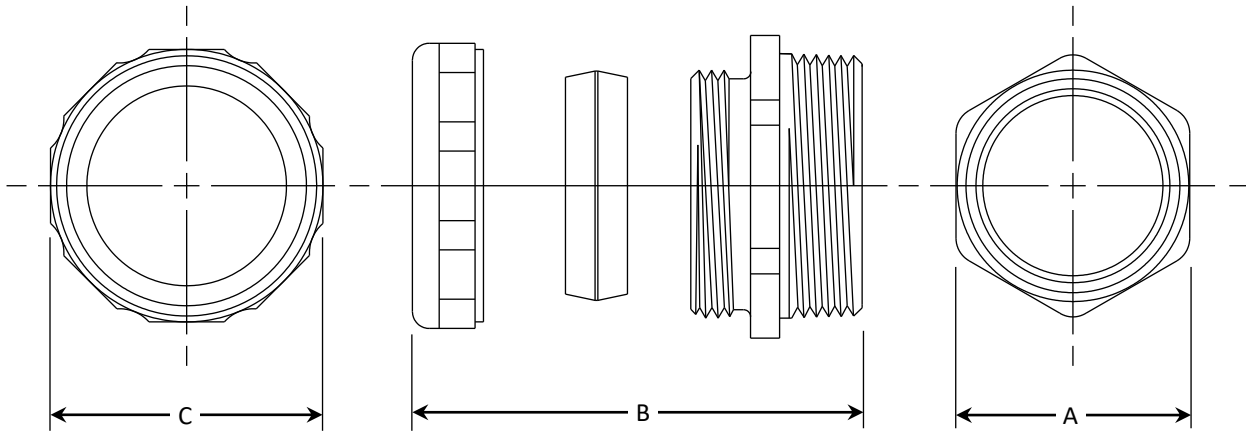
**Standard Part Listing:**

- |                          |      |   |
|--------------------------|------|---|
| <input type="checkbox"/> | 190A | 1-1/4" OD compression x 1-1/4" MIP, rough finish  |
| <input type="checkbox"/> | 190B | 1-1/4" OD compression x 1-1/4" MIP, chrome finish |
| <input type="checkbox"/> | 190C | 1-1/4" OD compression x 1-1/4" MIP, rough finish  |
| <input type="checkbox"/> | 192A | 1-1/4" OD compression x 1-1/2" MIP, rough finish  |
| <input type="checkbox"/> | 192B | 1-1/4" OD compression x 1-1/2" MIP, chrome finish |
| <input type="checkbox"/> | 192C | 1-1/4" OD compression x 1-1/2" MIP, rough finish  |
| <input type="checkbox"/> | 196A | 1-1/2" OD compression x 1-1/2" MIP, rough finish  |
| <input type="checkbox"/> | 196B | 1-1/2" OD compression x 1-1/2" MIP, chrome finish |
| <input type="checkbox"/> | 196C | 1-1/2" OD compression x 1-1/2" MIP, rough finish  |

*This specification and all information contained herein is the confidential and exclusive property of Brasscraft Manufacturing Company, and shall not be disclosed to others without the written consent of Brasscraft Mfg. Co. This specification must be returned to Brasscraft Mfg. Co. if requested.*

# 190 / 192 / 196 Drain Waste Connector - Compression x MIP

<b>PART DIMENSIONS (Inches)</b>			
<b>Model</b>	<b>HEX. A</b>	<b>DIM. B</b>	<b>OCT. C</b>
190	1.64	1.50	1.75
192	1.64	1.50	1.88
196	1.88	1.50	1.88



*This specification and all information contained herein is the confidential and exclusive property of Brasscraft Manufacturing Company, and shall not be disclosed to others without the written consent of Brasscraft Mfg. Co. This specification must be returned to Brasscraft Mfg. Co. if requested.*

400.327 190/192/196 Drain Waste Connector - Compression x MIP REV 9.19

**BrassCraft**<sup>®</sup>

©2019 Brasscraft Manufacturing Company