

**For Residential and Commercial Applications**

Job Name		Engineer / Architect	
Job Location		Wholesaler	
Submittal Date		Contractor	

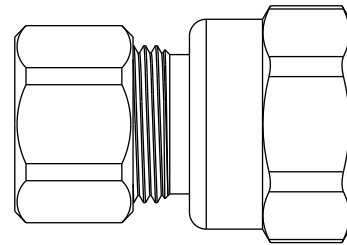
## 10X / 12X Series      Female Compression Adaptors - Drill Through

**Use:** For use with potable and non-potable water, instrumentation, hydraulic, and pneumatic systems. Designed for use with aluminum, copper, and plastic tubing\*. Not intended for use with steel tubing.

\* Plastic tubing requires a plastic insert and sleeve (see 60PT & 63PT submittal forms for details).

**Design Features:**

- **Little to no tube preparation.** Compression fittings do not require flaring, soldering, or other types of tube preparation



**Operating Specifications:**

**Temperature:** -65° to 250° F

**Working Pressure:** See chart below

WORKING PRESSURE		
PSI	Tube OD	Tube Wall (Inches)
200	3/8	0.032
200	1/2	0.032

FITTING MATERIAL SPECIFICATIONS	
<b>Body</b>	Brass
<b>Compression Sleeve</b>	Brass
<b>Compression Nut</b>	Brass, plated
<b>Option</b>	Plating

**Part Listing:**

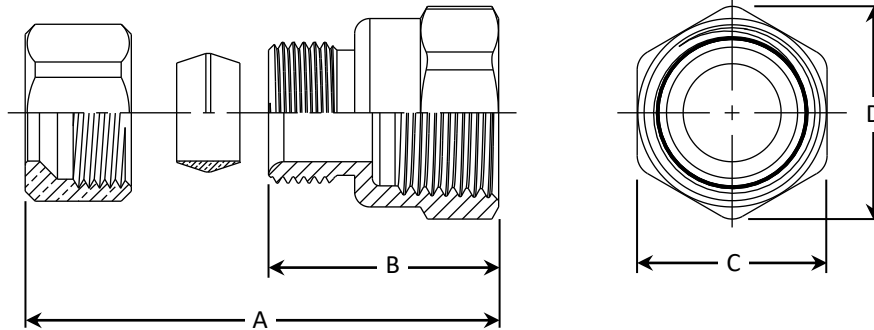
- 10X C      3/8" OD tube x 3/8" FIP, chrome plated
- 10X CBT    3/8" OD tube x 3/8" FIP, chrome plated, plain tray, bulk
- 10X CD     3/8" OD tube x 3/8" FIP, chrome plated, carded
- 10X R      3/8" OD tube x 3/8" FIP, rough brass
- 10-1X CBT   3/8" OD tube x 3/8" FIP - body only, chrome plated, plain tray, bulk
- 10-1X RBT   3/8" OD tube x 3/8" FIP - body only, rough brass, plain tray, bulk
- 12X C      3/8" OD tube x 1/2" FIP, chrome plated
- 12X CBT    3/8" OD tube x 1/2" FIP, chrome plated, plain tray, bulk
- 12X CD     3/8" OD tube x 1/2" FIP, chrome plated, carded
- 12X R      3/8" OD tube x 1/2" FIP, rough brass
- 12-1X CBT   3/8" OD tube x 1/2" FIP - body only, chrome plated, plain tray, bulk
- 12-1X RBT   3/8" OD tube x 1/2" FIP - body only, rough brass, plain tray, bulk

This specification and all information contained herein is the confidential and exclusive property of Brasscraft Manufacturing Company and shall not be disclosed to others without the written consent of Brasscraft Mfg. Co. This specification must be returned to Brasscraft Mfg. Co. if requested.

10X / 12X Series

Female Compression Adaptors - Drill Through

<i>PART DIMENSIONS (Inches)</i>				
<i>Model</i>	<i>DIM. A</i>	<i>DIM. B</i>	<i>HEX. C</i>	<i>DIM. D</i>
10	1.19	0.91	3/4	.84
12	1.28	1.00	7/8	.98
30	1.19	0.91	3/4	.84
32	1.28	1.00	7/8	.98



*This specification and all information contained herein is the confidential and exclusive property of Brasscraft Manufacturing Company and shall not be disclosed to others without the written consent of Brasscraft Mfg. Co. This specification must be returned to Brasscraft Mfg. Co. if requested.*

300.250 10X/12X Series Drill Through Adaptor - Comp x Comp REV 9.19



©2019 Brasscraft Manufacturing Company