

For Residential and Commercial Applications

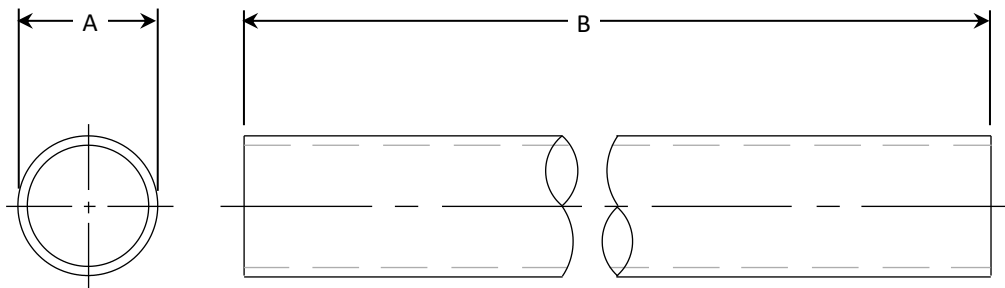
Job Name		Engineer / Architect	
Job Location		Wholesaler	
Submittal Date		Contractor	

1-12 / 1-72 Copper Tubing – Dead Soft

Uses: For use in potable water distribution in accessible locations only.

Design Features:

- One-piece construction



Operating Specifications:

Temperature: 40° - 140° F

Pressure: 125 PSI maximum

MATERIAL SPECIFICATIONS	
Tube	Copper, chrome plated

PART DIMENSIONS (Inches)			
Model	DIA. A	DIM. B	WALL
1-12	.375	12.00	.025
1-72	.375	72.00	.025

Part Listing:

- 1-12 C 3/8" OD x 12" long slip tube, chrome plated
- 1-72 C 3/8" OD x 72" long slip tube, chrome plated