

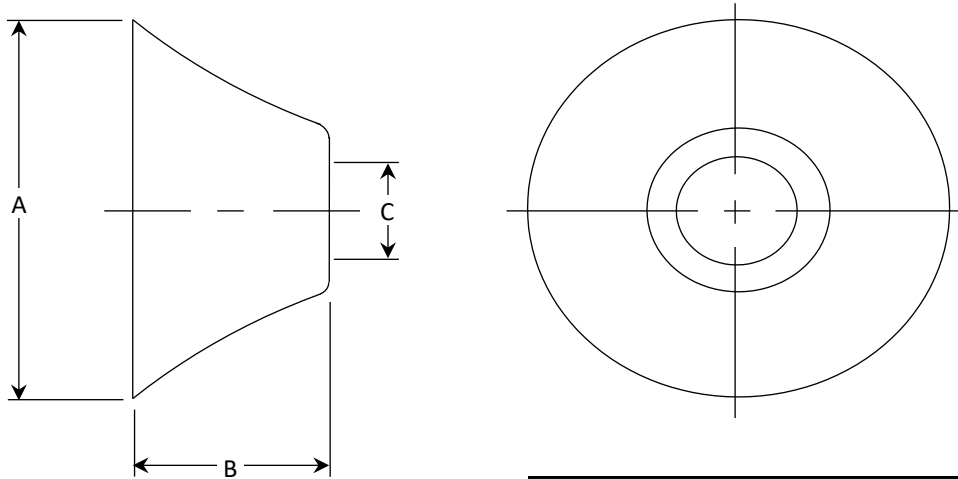
For Residential and Commercial Applications

Job Name		Engineer / Architect	
Job Location		Wholesaler	
Submittal Date		Contractor	

650 / 651 / 652 / 654 Bell Flange

Design Features:

- **Attractively conceals** holes in the floor or wall after rough-ins
- **Easy to install**
- **Internal tabs secure flange** to various tubing: copper, steel, CPVC, and PEX



MATERIAL SPECIFICATIONS	
Flange	Steel, plated

PART DIMENSIONS (Inches)			
Model	DIA. A	DIM. B	DIA. C
650	2.40	1.12	.69
651	2.40	1.12	.84
652	2.40	1.12	.38
654	2.40	1.12	.63

Part Listing:

- | | | |
|--------------------------|--------|--|
| <input type="checkbox"/> | 650 C | Bell flange fits over 3/8" iron pipe (.69 ID), chrome plated |
| <input type="checkbox"/> | 650 BZ | Bell flange fits over 3/8" iron pipe (.69 ID), oil-rubbed bronze |
| <input type="checkbox"/> | 650 NS | Bell flange fits over 3/8" iron pipe (.69 ID), satin nickel |
| <input type="checkbox"/> | 650 P | Bell flange fits over 3/8" iron pipe (.69 ID), polished brass |
| <input type="checkbox"/> | 650 CB | Bell flange fits over 3/8" iron pipe (.69 ID), chrome plated, bulk |
| <input type="checkbox"/> | 650 NP | Bell flange fits over 3/8" iron pipe (.69 ID), polished nickel |
| <input type="checkbox"/> | 651 C | Bell flange fits over 1/2" iron pipe (.84 ID), chrome plated |
| <input type="checkbox"/> | 651 CB | Bell flange fits over 1/2" iron pipe (.84 ID), chrome plated, bulk |
| <input type="checkbox"/> | 651 BZ | Bell flange fits over 1/2" iron pipe (.84 ID), oil-rubbed bronze |
| <input type="checkbox"/> | 651 NS | Bell flange fits over 1/2" iron pipe (.84 ID), satin nickel |
| <input type="checkbox"/> | 652 C | Bell flange fits over 3/8" OD tube (1/4" nom), chrome plated |
| <input type="checkbox"/> | 654 C | Bell flange fits over 5/8" OD tube (1/2" nom), chrome plated |
| <input type="checkbox"/> | 654 BZ | Bell flange fits over 5/8" OD tube (1/2" nom), oil-rubbed bronze |
| <input type="checkbox"/> | 654 NS | Bell flange fits over 5/8" OD tube (1/2" nom), satin nickel |

This specification and all information contained herein is the confidential and exclusive property of Brasscraft Manufacturing Company, and shall not be disclosed to others without the written consent of Brasscraft Mfg. Co. This specification must be returned to Brasscraft Mfg. Co. if requested.

