

TSP935.01 SPECIFICATIONS

pure·2/opus·2 thermostatic tub/shower valve trim with 2-way diverter & volume control

FEATURES:

- Wall-mount thermostatic mixer, rectangular trim with 2-way diverter, volume control & lever handles
- Enjoy multiple combinations with the upper & lower handles: the top handle diverts between port 1 + port 2; the bottom handle individually controls port 3 & the center control regulates temperature
- 3 ports, 5 functions: port 1, port 2 & port 3 can be operated individually; ports 1 & 3 can be operated simultaneously; ports 2 & 3 can be operated simultaneously
- Durable, solid brass construction
- Screwless, 1/4" thin profile trim
- Anti-scald safety stop, preset to 100°F / 38°C
- Set and maintain precise desired temperature
- Requires TS935.01 3/4" thermostatic rough-in valve



SPECIFICATIONS:

Warranty:	Limited lifetime warranty (residential) One year warranty (commercial)
Material:	Brass construction
Flow rate:	12.5 gpm @ 60 PSI (output will vary depending on device in operation)
Weight:	3 lbs (1.36 kgs)*
Shipping dimensions:	(LWH) 15 1/2" x 8 1/2" x 5" (394mm x 216mm x 127mm)*
FINISH:	Polished chrome

REQUIRED:

- TS935.01 3/4" thermostatic rough-in valve (sold separately)

ACCESSORIES (sold separately):

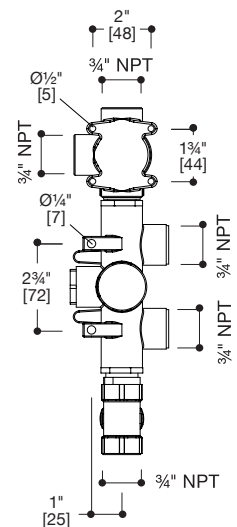
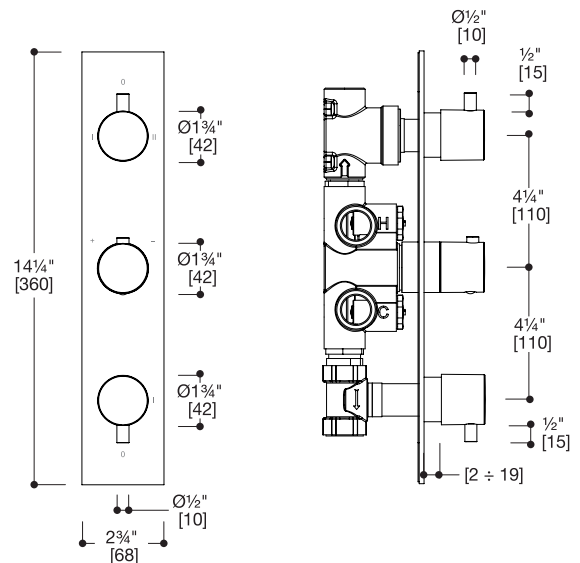
- Extension kits available for deep in-wall installation, PT4401 for thermostatic handle + PT3403 for diverter & volume control handle

INSTALLATION:

Install this product according to the installation guide. Our products must be installed by certified professionals only and according to our installation guide as well as federal, provincial/state and local building codes and regulations.

CODES / STANDARDS APPLICABLE:

- Meets or exceeds ANSI / ASME standard A112.18.1 and CAN / CSA B125.1-05 requirements
- Listed with IAPMO bearing the UPC / cUPC mark
- ADA compliant



*Approximate measurements for comparison only.
Note: These dimensions and specifications are subject to change without notice.