

SA0107N37 SPECIFICATIONS

coco blu·stone™ countertop basin

FEATURES:

- Above-the-counter modern design without overflow
- Made of blu·stone™ providing the look and feel of natural stone
- Matching blu·stone™ waste cover included
- Stronger and more durable than ceramic
- Non-porous, stain resistant surface that does not require sealing
- Does not promote bacteria, mold or fungi

SPECIFICATIONS:

Drain hole:	Ø1¾" (Ø46mm) *
Size:	14½" DIA (Ø370mm)*
Height:	5" (130mm)
Weight:	11lbs (5kg)*
Warranty:	Five Year Warranty (Residential use) One Year Warranty (Commercial use)
Material:	blu·stone™
Shipping Weight:	13lbs (6kg)*
Shipping Dimensions:	(LWH) 18" x 18" x 8½" (460mm x 460mm x 215mm)*

COLOR / FINISHES:

White matte or gloss as standard

ACCESSORIES (sold separately):

- Recommend TW120 or TW120-S push button waste

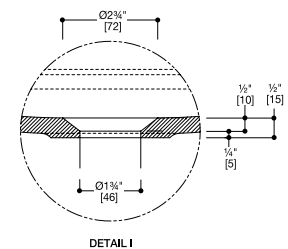
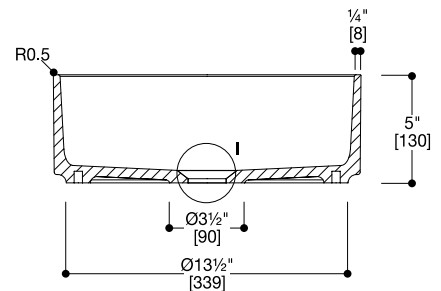
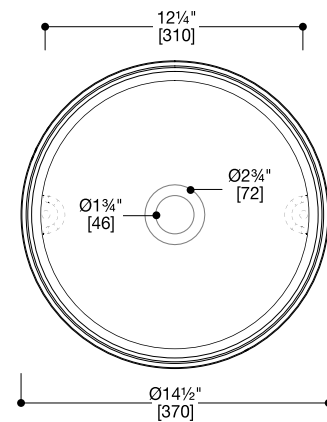
INSTALLATION NOTES:

Install this product according to the installation guide.
Our products must be installed by certified professionals only and according to our installation guide as well as federal, provincial / state and local building codes and regulations.

CODES / STANDARDS APPLICABLE:

- ASME A112.19.2
- IAPMO / cUPC
- ICC / ANSI A117.1
- CSA B 45
- Fixture dimensions and hydraulic performance meet or exceed

ANSI / ASME standard A112.19.2, A112.19.9M and CAN / CSA B 45 requirements.



*Approximate measurements for comparison only.

Note: These dimensions and specifications are subject to change without notice.