

# F51V1-0700 SPECIFICATIONS

## 51 collection series 700 wall-mount vanity

### FEATURES:

- Wall-mounted vanity with deep drawer + slim drawer insert
- Slim inner drawer designed for plumbing clearance
- Solid rust-free painted powder frame construction and drawer runners
- Hettich push/pull drawer opening system
- One continuous bracket along the backside for ease of installation: allows for easy retro-fitting/hitting studs where backing or additional support is not available
- Wall mount design opens space and facilitates easy cleaning
- Made of IDROLEB ECOLOGICAL PANEL with the lowest formaldehyde emissions in the world
- IDROLEB also ensures defence against humidity
- Italian-crafted for superior quality
- Drawer organization available (sold separately)

### SPECIFICATIONS:

Dimensions: (WHD) 27½" x 19" x 20¼"  
(700mm x 480mm x 515mm)\*

Weight: 66.1lbs (30kg)\*

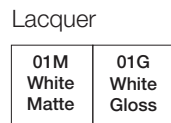
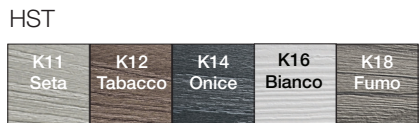
Materials: Hard Surface Technology (HST)  
Hard Surface Technology (HST) finishes offer extraordinary technical performance in terms of exceptional durability, extremely high resistance to scratches and chemicals, in addition to a beautiful aesthetic and tactile wood grain effect

Lacquer  
Five Year Limited Warranty (Residential)  
One Year Warranty (Commercial)

Shipping Weight: 77.1lbs (35kg)\*

Shipping Dimensions (WHD) 32" x 23¼" x 24¼"  
(810mm x 590mm x 615mm)

### STOCKED COLOR/FINISH:



### VANITY/COUNTER TOP OPTIONS:

- SA0700 blu-stone™ vanity top basin
- SAC0700 blu-stone™ vanity countertop

### DRAWER ORGANIZATION OPTIONS:

- F01AC-02 2 Cosmetic Holders
- F01AC-01 2 Storage Compartments
- F01AC-04 1 Tissue Box
- F01AC-03 2 Storage Bin Sets

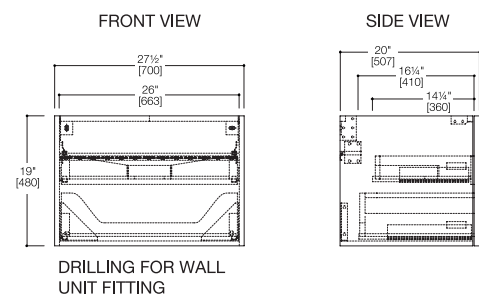
### INSTALLATION NOTES:

Install this product according to the installation guide. Our products must be installed by professionals only and according to our installation guide as well as federal, provincial / state and local building codes and regulations.

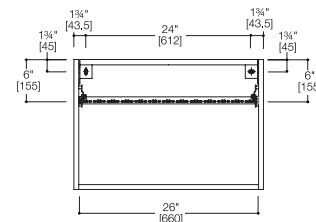


\*Approximate measurements for comparison only.

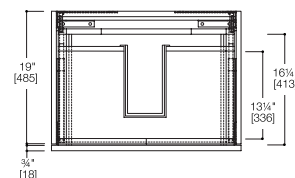
Note: These dimensions and specifications are subject to change without notice.



### WALL DRILLING SCHEME FOR VANITY



### ABOVE VIEW



Drawer organization available for all 51 vanities

