

# BT8007 SPECIFICATIONS

## box-3 acrylic freestanding/alcove bathtub

### FEATURES:

- Freestanding or alcove acrylic bathtub with overflow
- Streamlined, high profile and seamless one piece design
- 70¾" (1800mm) L x 31½" (800mm) W x 23½" (600mm) H
- Seamless rectangular bathtub with curvilinear interior
- Includes white gloss waste
- Optional Brushed Nickel and White Gloss waste & overflow kits available
- Alcove installation requires separate tile flange, not included (Blu recommends TF.BTTSB tile flange)
- Tailpiece not included (Blu recommends BTWaste.RN or BTWasteCI.RN)

### SPECIFICATIONS:

Basin Area:	45¼" (1150mm) x 19" (480mm)*
Top Area:	66¼" (1680mm) x 28¼" (720mm)*
To Overflow:	2¼" (60mm)*
Water Depth:	16½" (420mm)*
Capacity:	80G (303L)*
Slope of Backrest:	51°*
Weight:	97lbs (44kg)*
Hot water supply req'd:	Should be 70% of water capacity of tub or greater
Warranty:	Five Year Warranty (Residential use) One Year Warranty (Commercial use)
Material:	Acrylic
Shipping Weight:	117lbs (53kg)*
Shipping Dimensions:	(LWH) 73¼" x 32" x 24¾" (1860mm x 820mm x 630mm)*

### FINISH:

White Gloss

### ACCESSORIES (sold separately):

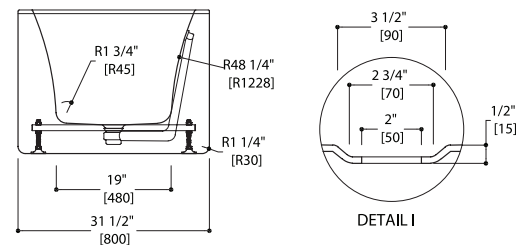
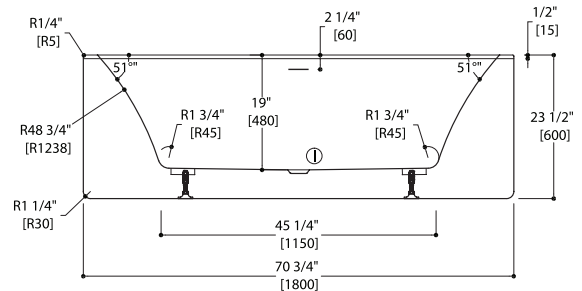
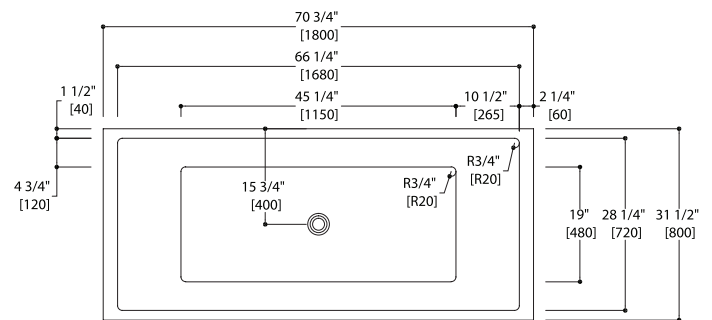
- TF.BTTSB tile flange for alcove installation
- BTWaste.RN or BTWasteCI.RN Island tub drain for easy installation
- Waste & slot overflow kit available in Brushed Nickel (BT8000-BN) or White Gloss (BT8000-01G)

### INSTALLATION NOTES:

Install this product according to the installation guide. Floor support under bath must provide for a minimum of 1400 lbs (635kg). Installation will vary. Our products must be installed by certified professionals only and according to our installation guide as well as federal, provincial / state and local building codes and regulations

### CODES / STANDARDS APPLICABLE:

- Meets or exceeds ANSI / ASME standard Z124.1.2 and CAN / CSA B 45 requirements
- IAPMO / UPC / cUPC



\*Approximate measurements for comparison only.  
Note: These dimensions and specifications are subject to change without notice.