

# BT8005 SPECIFICATIONS

## box-2 acrylic freestanding/alcove bathtub

### FEATURES:

- Freestanding or alcove acrylic bathtub with overflow
- Streamlined, high profile and seamless one piece design
- 67" (1700mm) L x 29 1/4" (740mm) W x 23 1/4" (590mm) H
- Thin profile design with slim deck area
- Includes white gloss waste
- Optional Brushed Nickel and White Gloss waste & overflow kits available
- Alcove installation requires separate tile flange, not included (Blu recommends TF.BTSB tile flange)
- Tailpiece not included (Blu recommends BTWaste.RN or BTWaste.Cl.RN)

### SPECIFICATIONS:

Basin Area:	43 1/4" (1100mm) x 18" (460mm)*
Top Area:	64 1/2" (1640mm) x 26 3/4" (680mm)*
To Overflow:	2 1/4" (60mm)*
Water Depth:	16 1/2" (420mm)*
Capacity:	80G (304L)
Slope of Backrest:	61°*
Weight:	86lbs (39kg)
Hot water supply req'd:	Should be 70% of water capacity of tub or greater
Warranty:	Five Year Warranty (Residential use) One Year Warranty (Commercial use)
Material:	Acrylic
Shipping Weight:	106bs (48kg)*
Shipping Dimensions:	(LWH) 69 1/4" x 30" x 24 1/2" (1760mm x 760mm x 620mm)*

### FINISH:

White Gloss

### ACCESSORIES (sold separately):

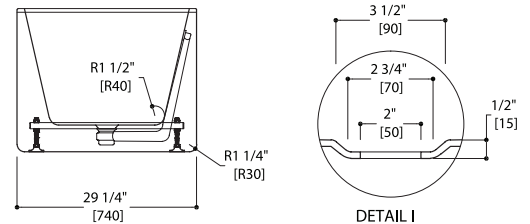
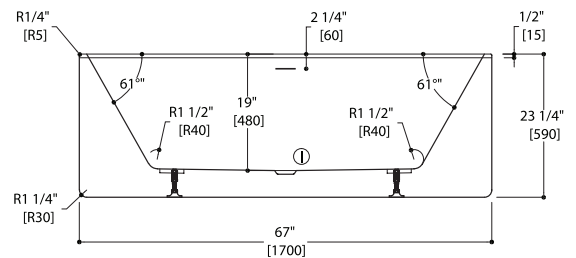
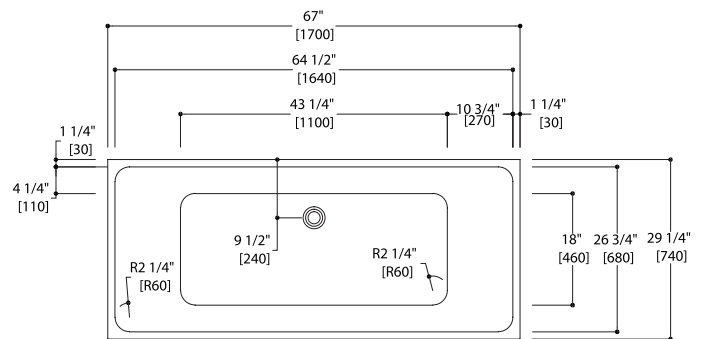
- TF.BTSB tile flange for alcove installation
- BTWaste.RN or BTWaste.Cl.RN Island tub drain for easy installation
- Waste & slot overflow kit available in Brushed Nickel (BT8000-BN) or White Gloss (BT8000-01G)

### INSTALLATION NOTES:

Install this product according to the installation guide. Floor support under bath must provide for a minimum of 1400 lbs (635kg). Installation will vary. Our products must be installed by certified professionals only and according to our installation guide as well as federal, provincial / state and local building codes and regulations

### CODES / STANDARDS APPLICABLE:

- Meets or exceeds ANSI / ASME standard Z124.1.2 and CAN / CSA B 45 requirements
- IAPMO / UPC / cUPC



\*Approximate measurements for comparison only.  
Note: These dimensions and specifications are subject to change without notice.